



**Massachusetts Bay
Transportation Authority**

GM Report to the Board

Phil Eng, MBTA General Manager and CEO

May 23, 2024



Healy-Driscoll Administration's Budget Proposal Supports the MBTA



Track Improvement Program

SPEED RESTRICTION STATUS | MAY 13, 2024



Our Progress So Far!



RESTRICTED DISTANCE

11.9 MILES

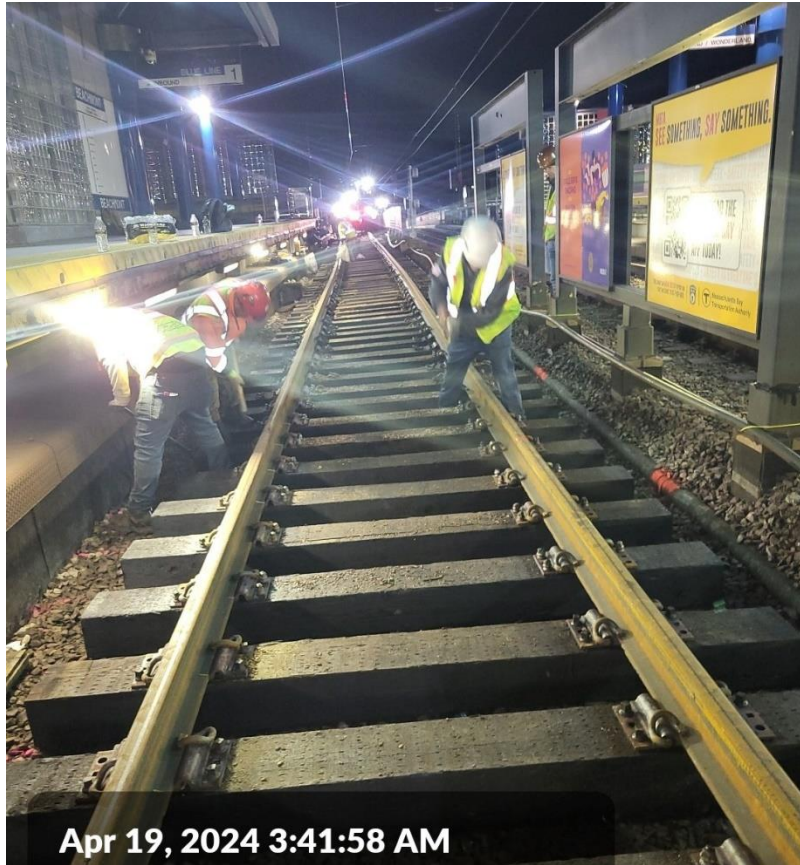
RESTRICTED TRACK

9%

RESTRICTION COUNT

83

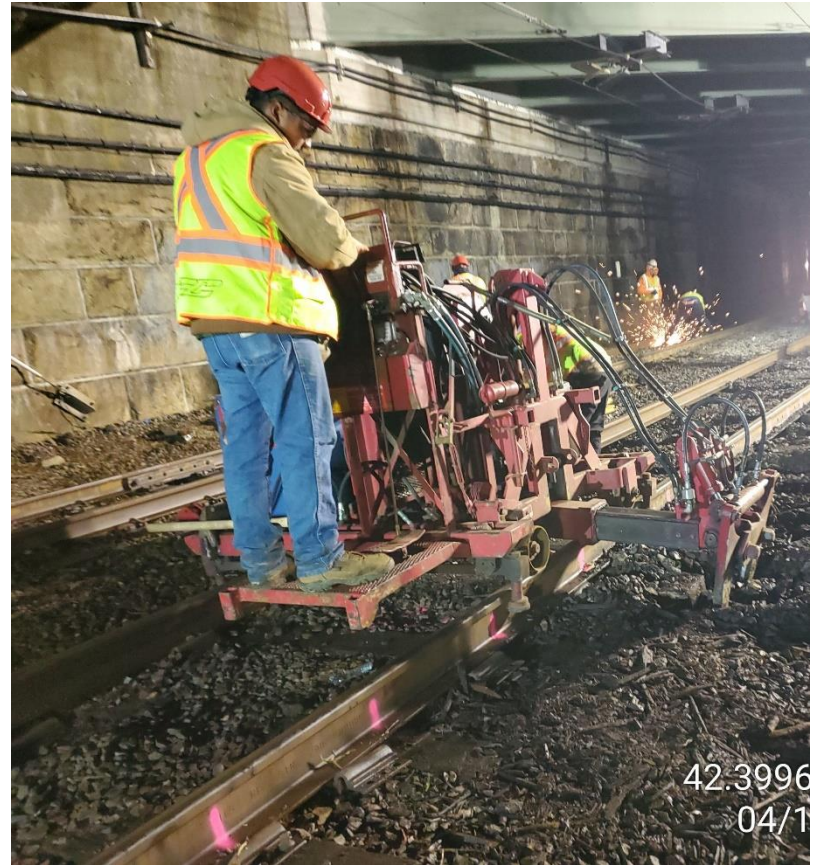




Apr 19, 2024 3:41:58 AM



United States
Beachmont



42.3996
04/1

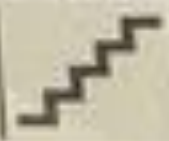


Blue Line

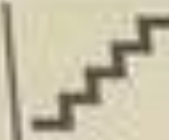
19 Speed Restrictions Lifted ~18,000 Ft Rail ~6,500 Ties ~41,650 Ft Tamped
~800 ft Full-Depth 3 Switches Replaced ~4 min Improved Trip Time

Improving Service

AIRPORT SHUTTLE



SILVER LINE - SL3



Bowdo in
Bowdo in

2 min
5 min

6:48

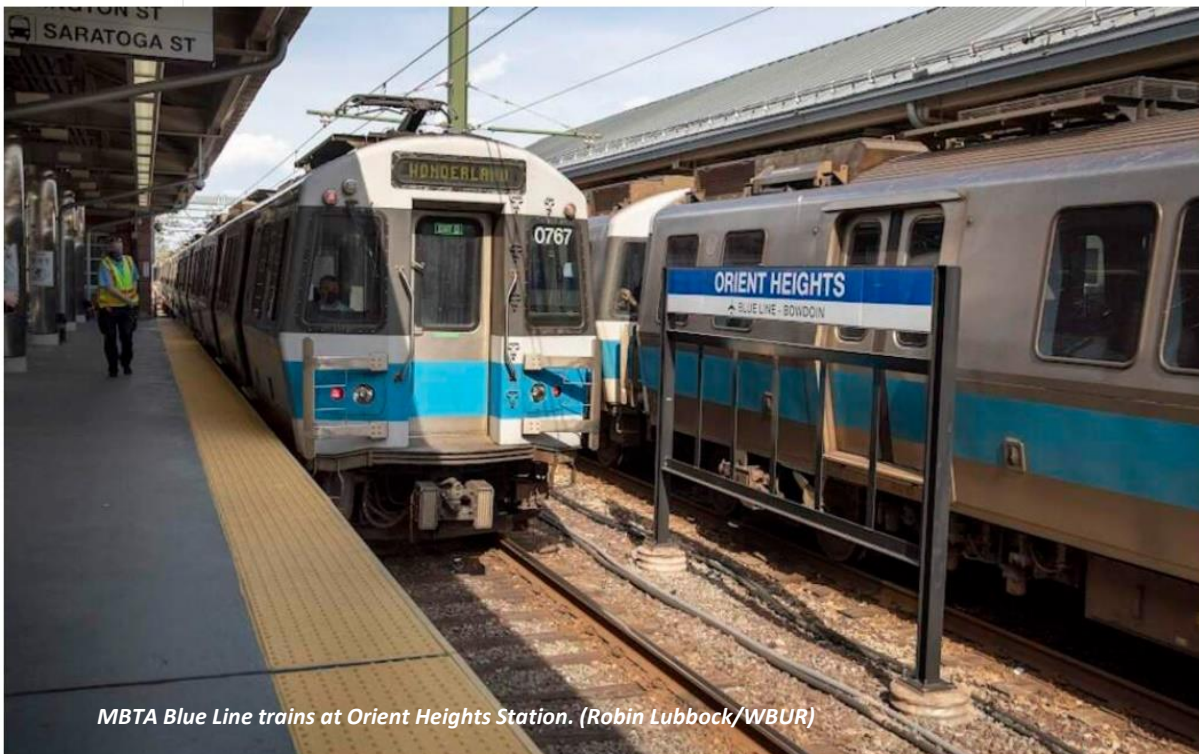


A Total Team Effort

For the first time in over a year, the MBTA has a line free of slow zones

May 06, 2024 | By [Nik DeCosta-Klipa](#)

wbur



MBTA Blue Line trains at Orient Heights Station. (Robin Lubbock/WBUR)

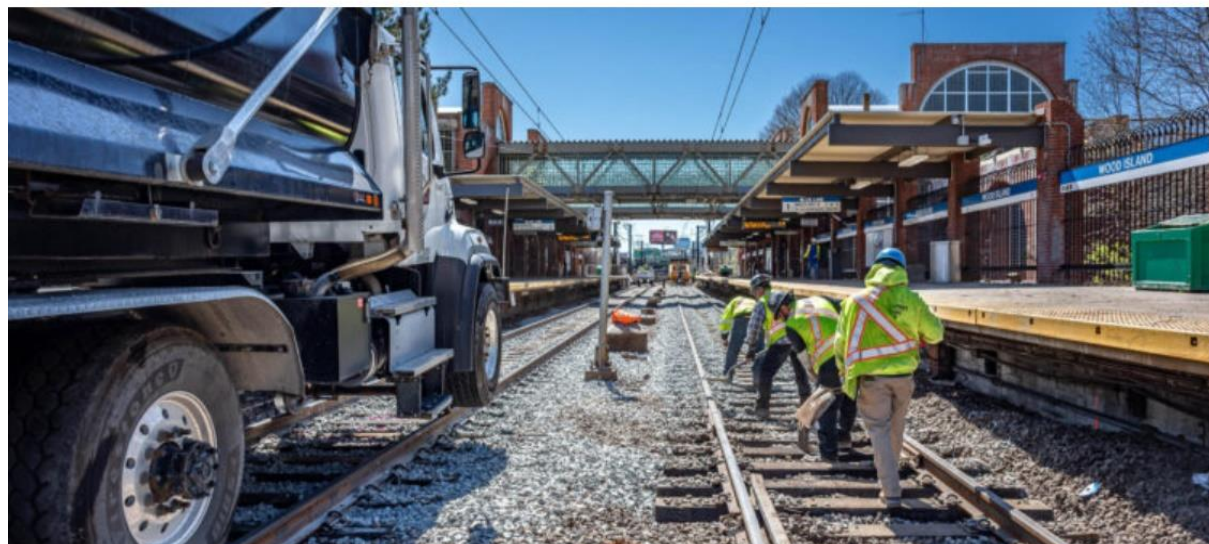
May 02, 2024 | OFF Track Maintenance

MBTA's Blue Line Restriction-Free After 'Critical' Track Work

Written by Jennifer McLawhorn, Managing Editor



RT&S

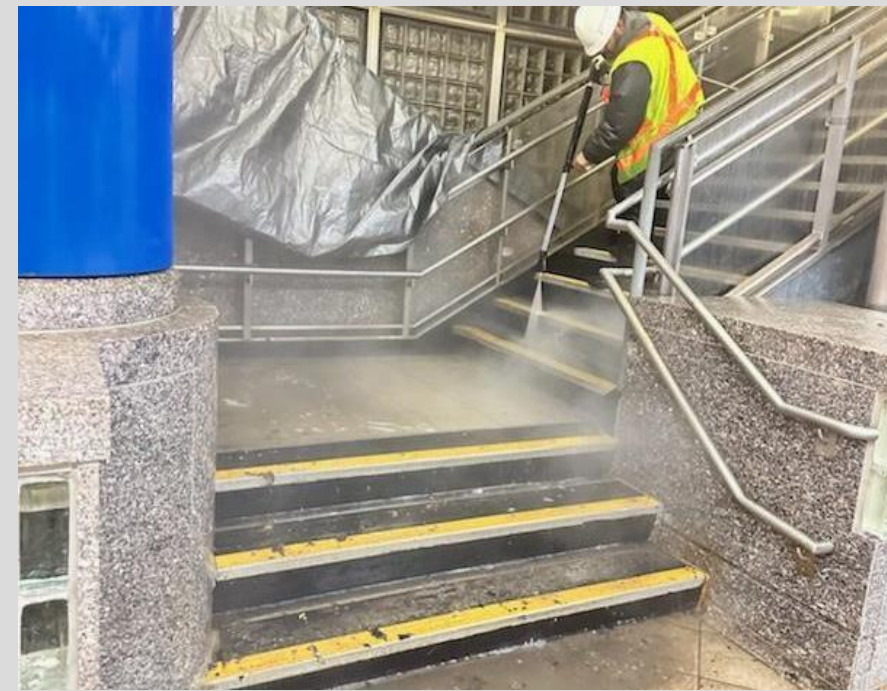


Crews performed track and tie replacement work long the Blue Line at Wood Island station. Photo Courtesy of the MBTA Customer and Employee Experience Department.

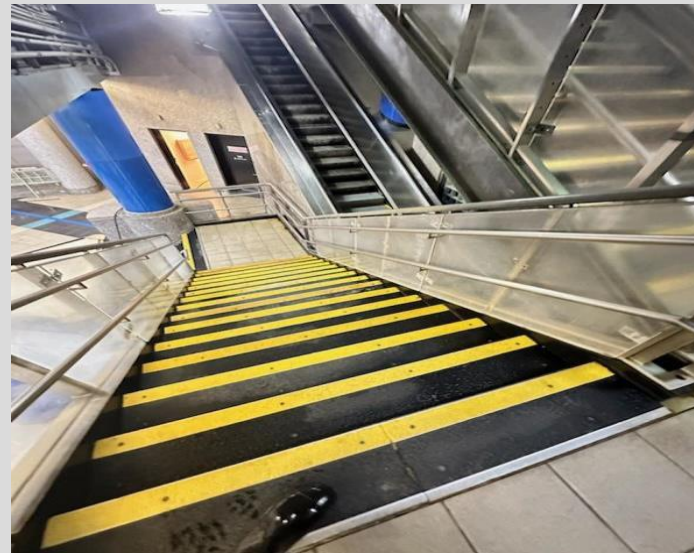
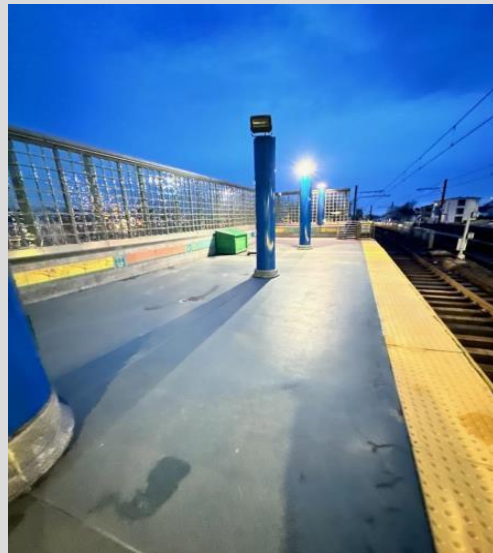


Blue Line Wonderland Operators' Platform | Demo & Rebuild





Blue Line Beachmont | Station Improvements





Blue Line Revere Beach | Stairs Repaired

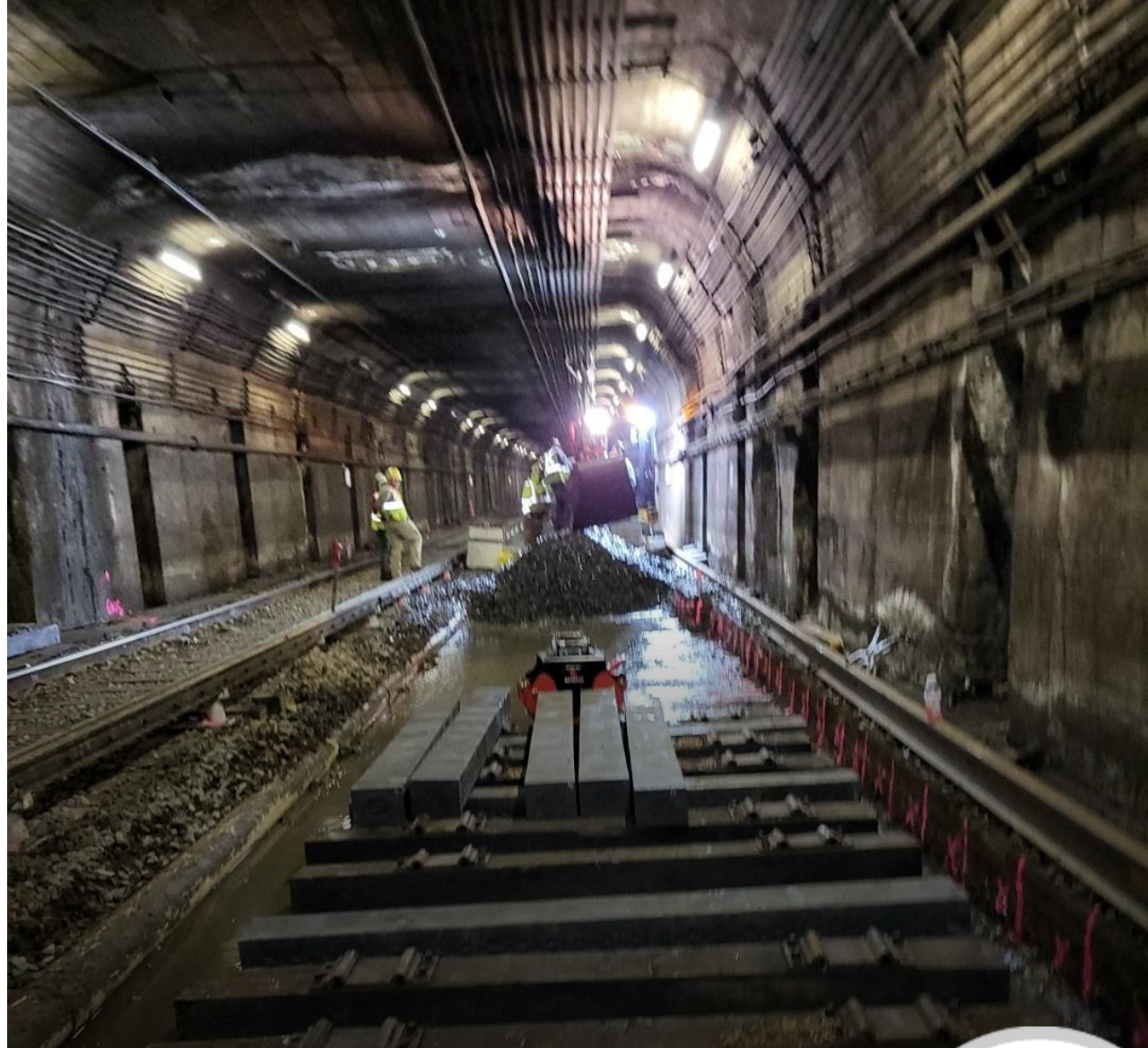
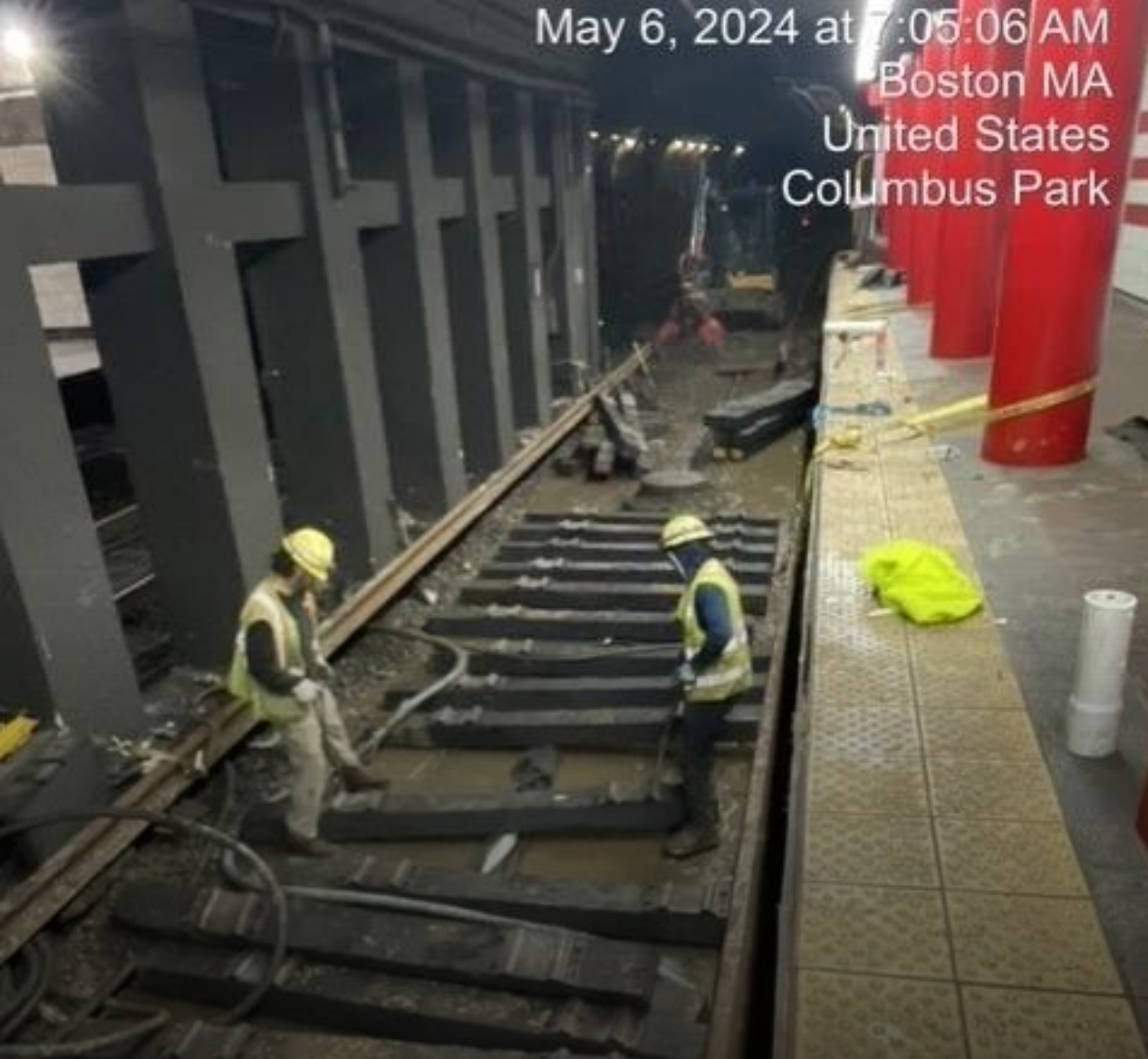




Blue Line Suffolk Downs | Installed Rail Rub WB Platform



May 6, 2024 at 7:05:06 AM
Boston MA
United States
Columbus Park



Red Line

13 Speed Restrictions Lifted ~10,200 Ft Rail ~225 Ties ~24,200 Ft Tamped
~1200 ft Full-Depth 3800 Tie Plates Replaced ~10 min Improved Trip Time



Red Line Diversion

+Cabot Yard Work Accomplished



Site Set Up & Demo



Replace Diamond X-Over



Replace Turnout 7



Replace Turnout 6



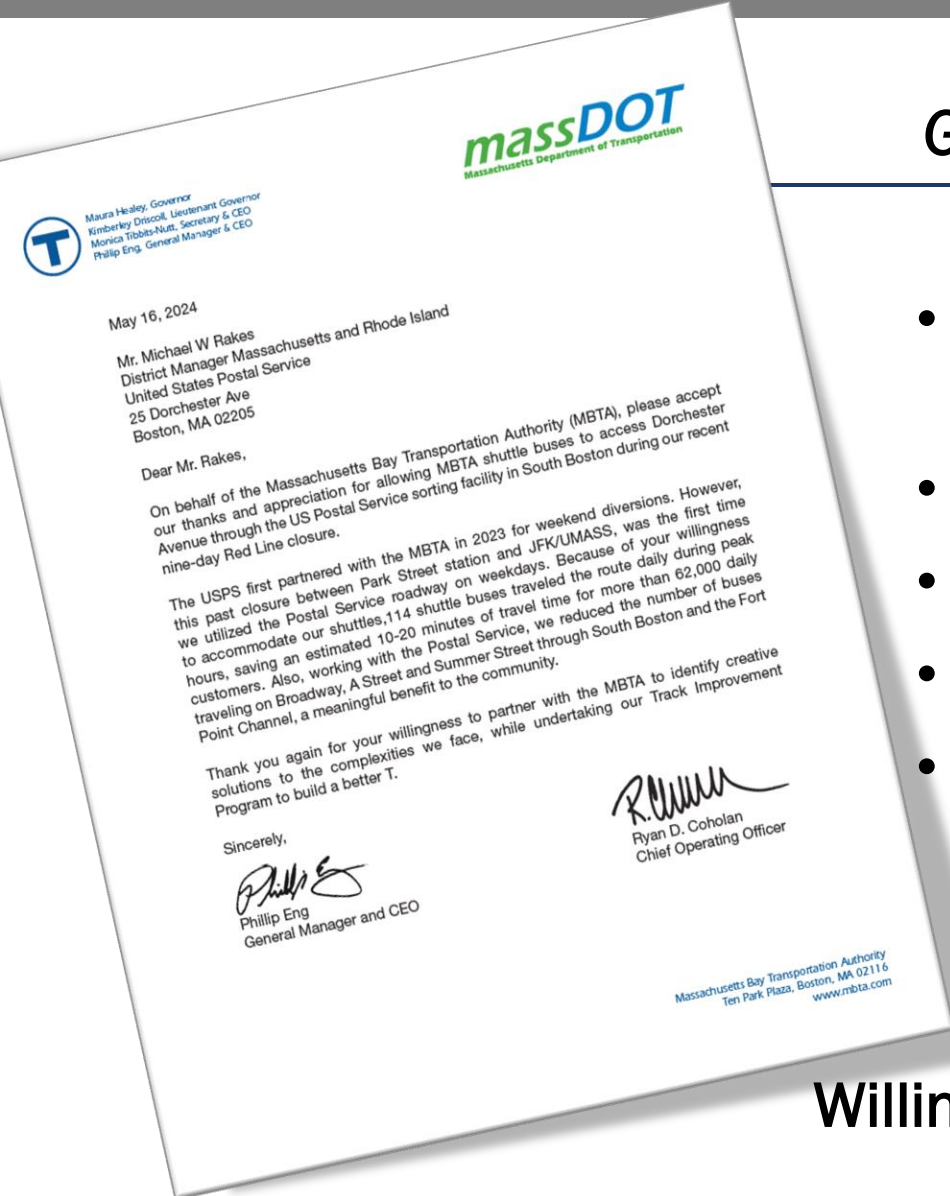
Reconnect Systems



Testing & Handback



Red Line Diversion | Thank you USPS



Grateful for the partnership



- MBTA shuttle buses accessed Dorchester Ave. through the US Postal Service sorting facility in South Boston.
- **114 shuttle buses** traveled the route daily.
- **Saved ~10-20 minutes** of travel time.
- For more than **62,000 customers** daily.
- **Reduced # of buses** traveling on Broadway, A and Summer Streets through South Boston and Fort Point Channel, a **meaningful benefit to the community**.

Willingness to partner & identify creative solutions



Track Improvement Program | *Upcoming Work – Orange Line*

Piggybacking on MassDOT Mystic Ave/Maffa Way Bridgework | OL Wellington to North Station Jun 22-30, 2024



Proposed Track Work

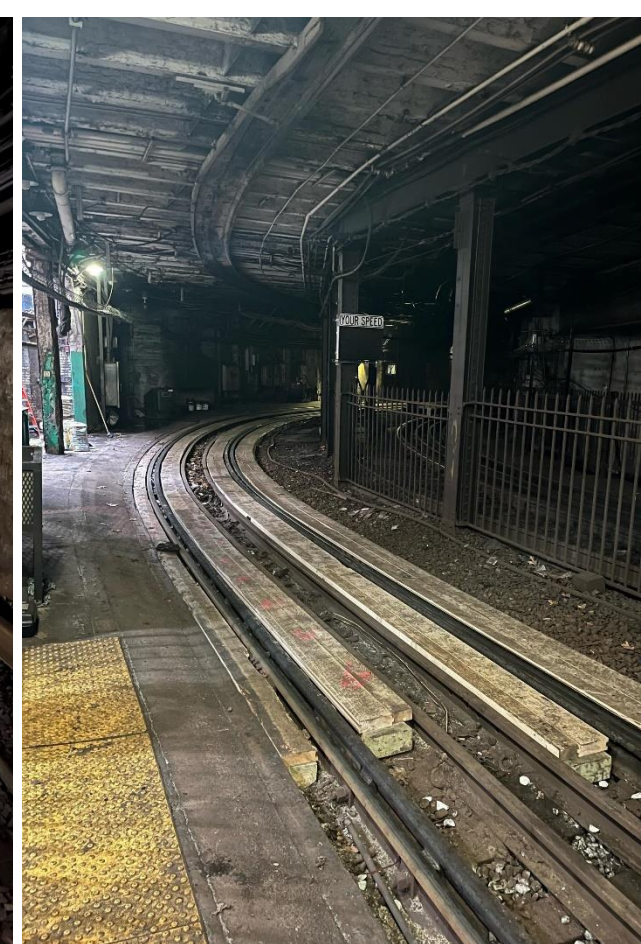
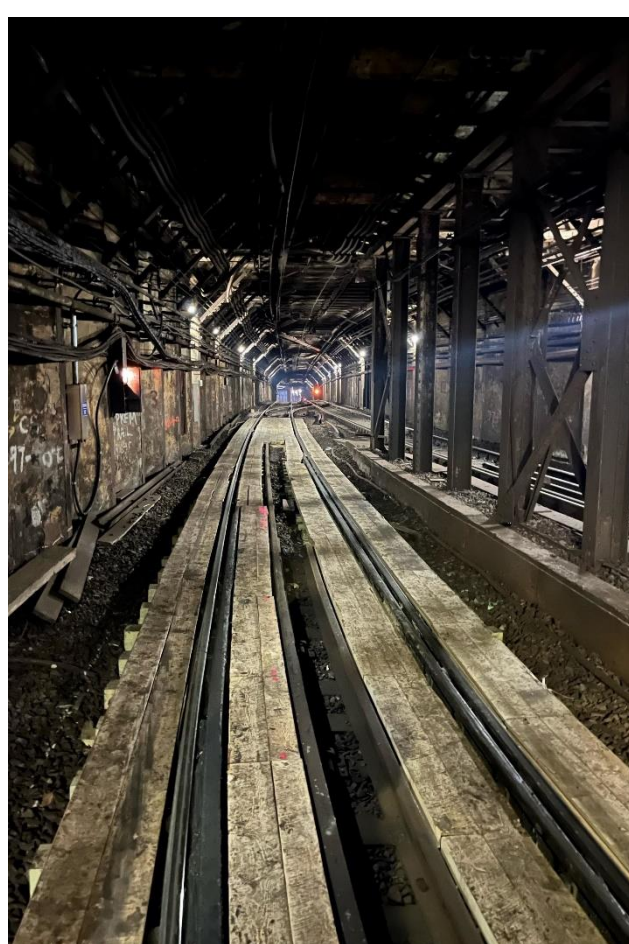
- 6 Speed Restrictions
- Full depth replacement
- Rail and tie replacement
- Surface, line, and tamping
- Contact rail insulator replacement.



Planning, Scoping & Preparing for Diversion Work

MBTA Safety works with the Diversion teams to identify potential hazards, assess risks & develop mitigations





Preparations for Construction Equipment during Diversions

*Planking
(Green Line Diversions)*





Preparations for Construction Equipment during Diversions

*Planking
(Blue Line Diversion)*





Specialized Construction Equipment

*2 sets of wheels –
Steel wheels & rubber wheels*



04/21/2024 21:39:07

Construction Equipment Incidents

Blue Line - Tie Cart



2024-05-03 17:49:54



Construction Equipment Incidents

Red Line - Gradall





Wayside Cable 1



Wayside Signal Cable 1



Cable Tray Installation



Crane Pick 1

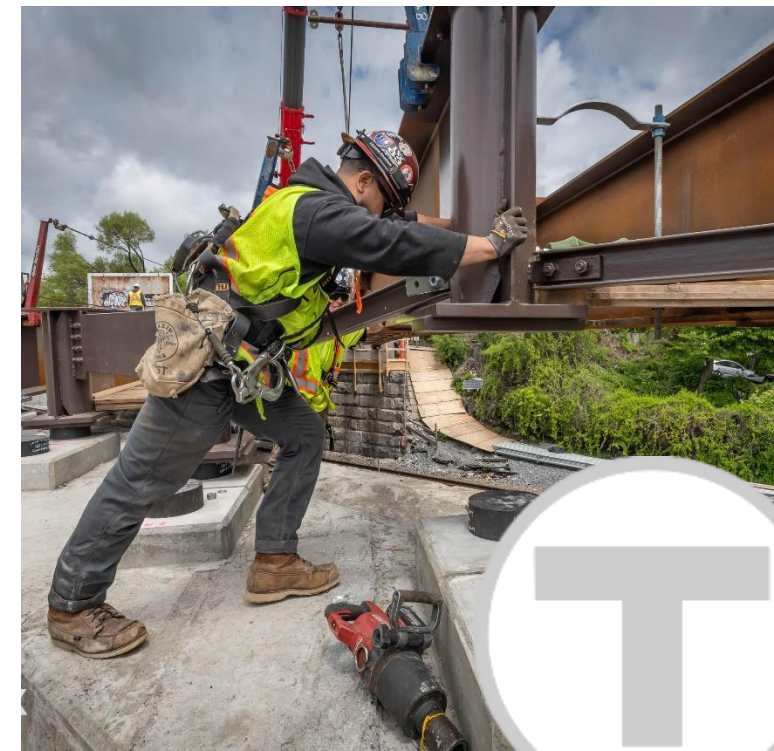
Mainline Signals Improvements Red Line & Orange Line

*Project progressing through weekend
diversions and TIP Trackwork
piggybacks*



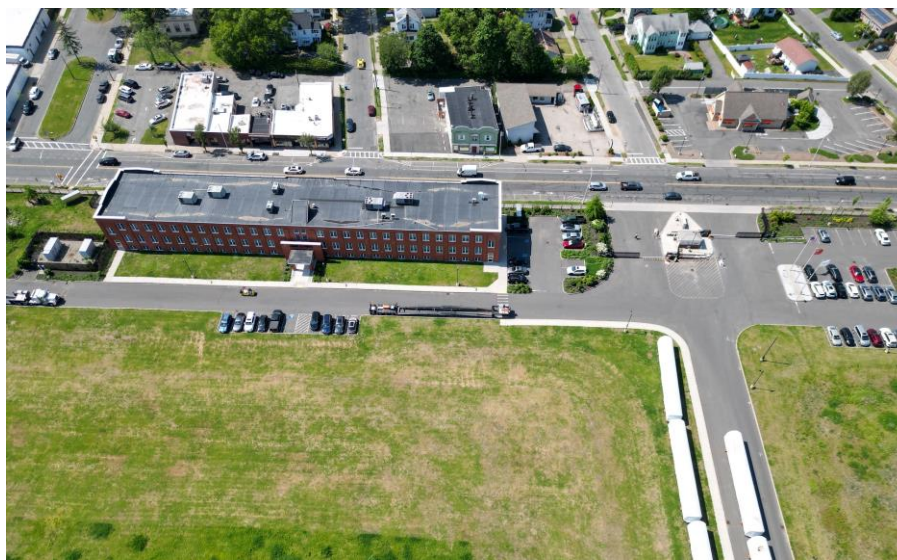
Dorchester Ave. Bridge

*Work continues -
Rebuilding and
Reinforcing our
Infrastructures*



OL & RL Cars

Continued progress towards deliveries





Red Line Cars



Project Update

Automated Fare Collection



Collaborating with Our Communities

*MBTA Advances ~1000
Units of Housing*





T Insights

Discussions with the Employee Relations Department support employee engagement.



Reflecting on and celebrating the important role Asian Americans, Native Hawaiians and Pacific Islanders play in our shared history.

Asian American and Pacific Islander Heritage Month

May, 2024



**Massachusetts Bay
Transportation Authority**



CEX



CE29



Airport

Brightening Our Stations

*Station Work and CEX
team up to create
attractive visuals for
our Station
Information Booths*





Aquarium

Brightening Our Stations

*Station Work and CEX
team up to create
attractive visuals for
our Station
Information Booths*





Revere Beach

Brightening Our Stations

*Station Work and CEX
team up to create
attractive visuals for
our Station
Information Booths*



Thank you | Questions

