



**Massachusetts Bay
Transportation Authority**

Safety Updates

Timothy Lesniak

MBTA Chief Safety Officer

Safety, Health and Environment Subcommittee

May 9, 2024



Discussion Topics

- 
- Blue Line Surge Overview
 - Recent Incidents and Corrective Actions

Blue Line Surge April 17- April 30 Maverick, Wonderland, Bowdoin Orient Heights

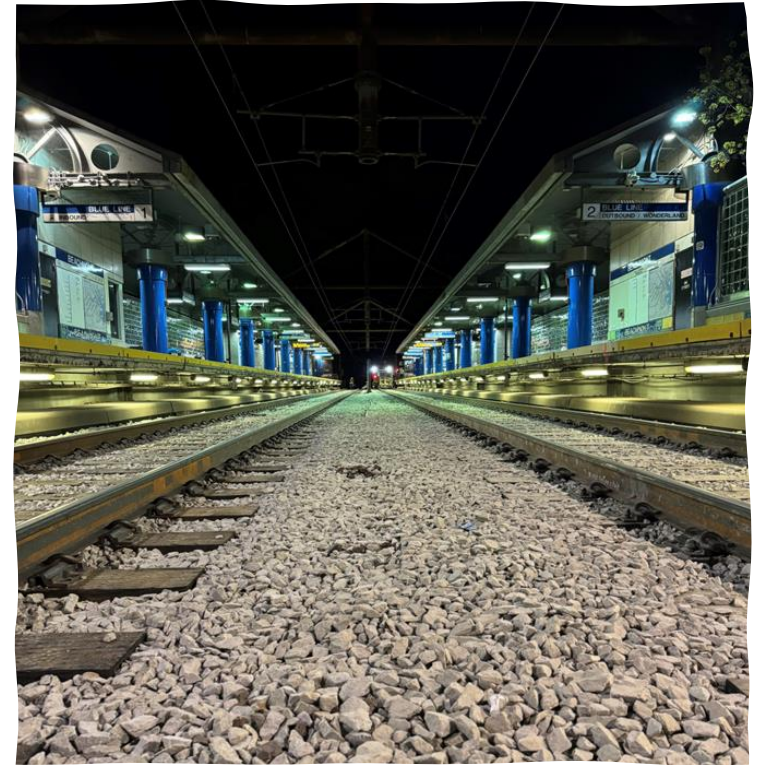
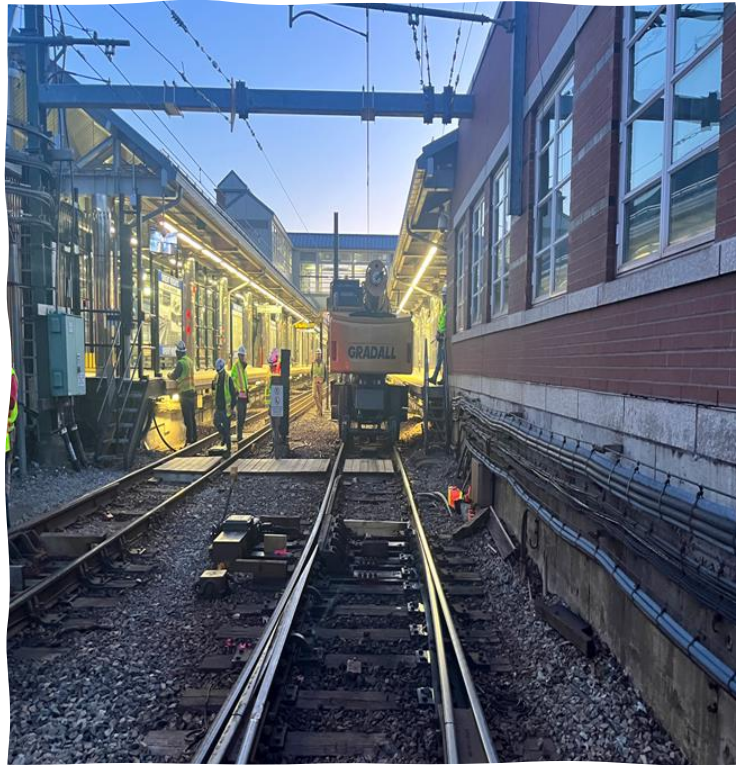
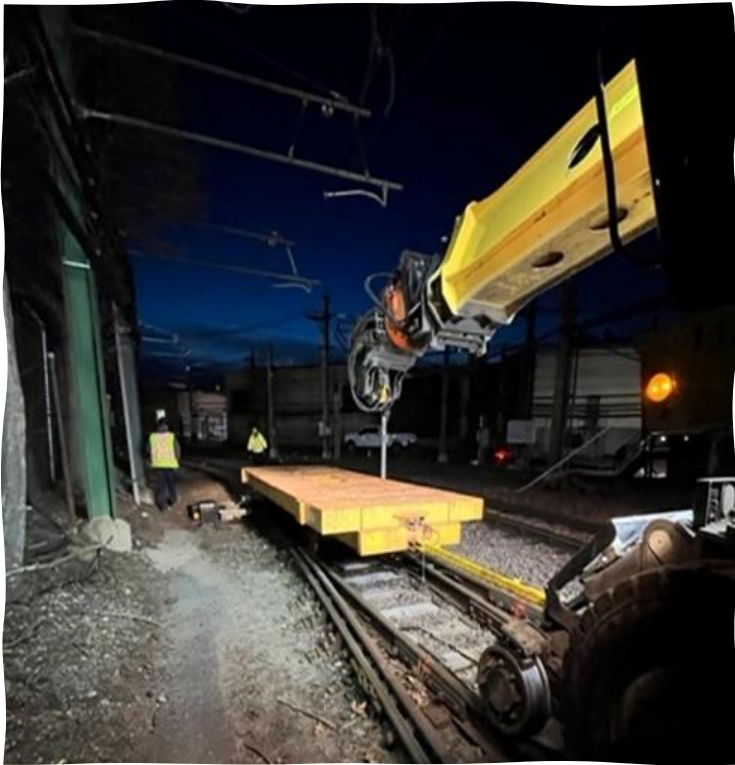
Infrastructure work:

- Surfaced and tamped approximately 41,000 feet of track
- Installed 48 composite ties at trip stops and approximately 35 switch timbers
- Replaced:
 - 22,500 feet of rail
 - More than 10,000 ties.
 - Over 9,000 feet of overhead catenary wire
 - Approximately 1,000 feet of full depth track
 - Approximately 700 feet of restraining rail

Station work:

- Performed station inspections and standpipe testing
- Repaired stairways, operator platforms and walkways, and roof canopies
- Replaced approximately 500 feet of fencing between Beachmont and Revere Beach

Blue Line Surge Photos



Recent Incidents and Corrective Actions



Questions?
