

**Massachusetts Bay
Transportation Authority**

Safety Updates

Safety, Health, & Environment Subcommittee Meeting

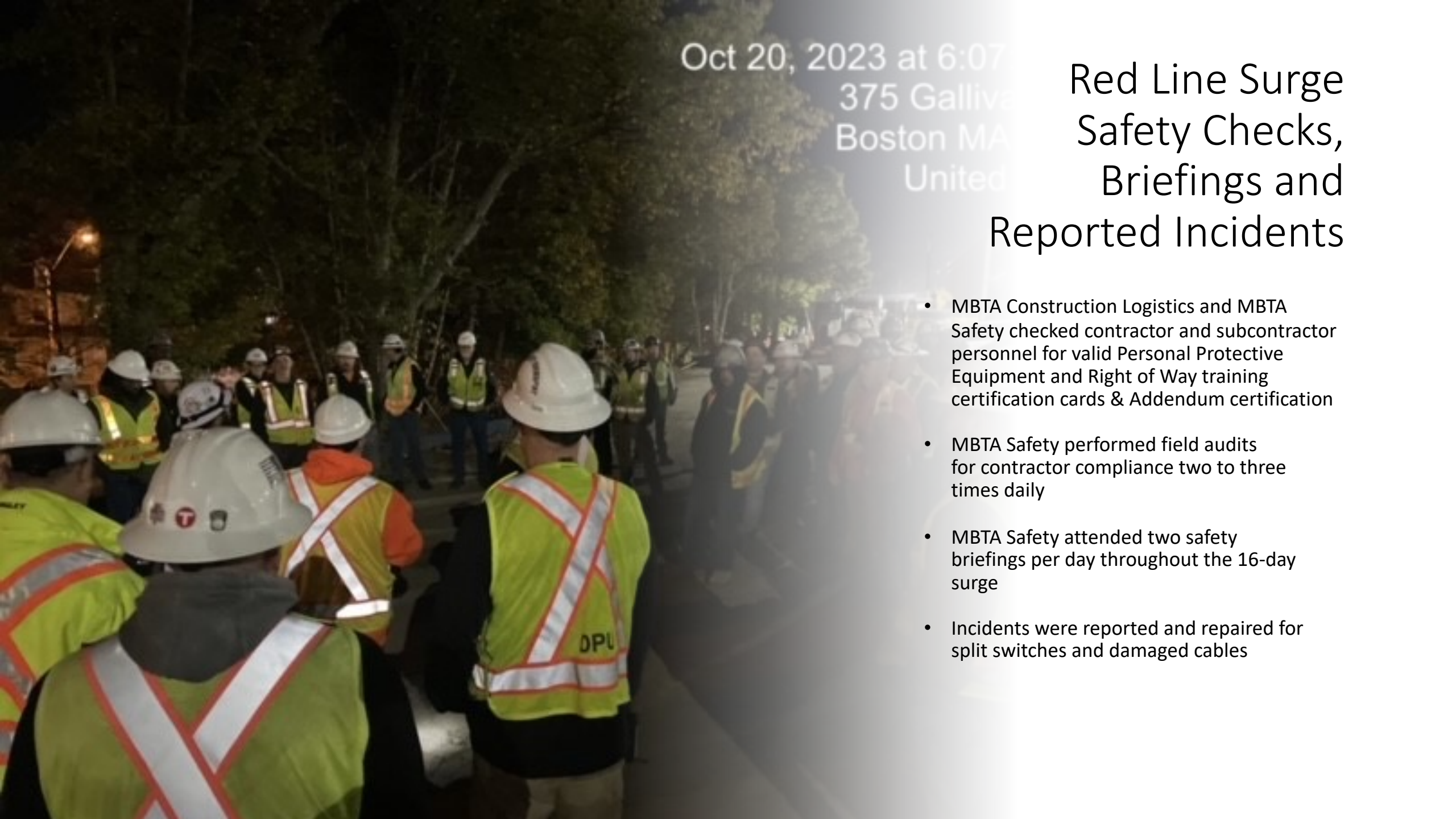
November 9, 2023

Timothy P. Lesniak – Chief Safety Officer

Oct 20, 2023 at 6:07
375 Gallivan
Boston MA
United

Red Line Surge Safety Checks, Briefings and Reported Incidents

- MBTA Construction Logistics and MBTA Safety checked contractor and subcontractor personnel for valid Personal Protective Equipment and Right of Way training certification cards & Addendum certification
- MBTA Safety performed field audits for contractor compliance two to three times daily
- MBTA Safety attended two safety briefings per day throughout the 16-day surge
- Incidents were reported and repaired for split switches and damaged cables



16-Day Red Line Surge JFK – Ashmont

- Shawmut Tunnel Ventilation Issue
 - Detection of increased level of Carbon Monoxide due to poor air movement in the tunnel.
 - Contractor immediately ceased work.
 - MBTA Safety, project team and contractor worked collaboratively to safely address and resolve the issue.
 - Administrative and engineering controls were put in place.



South Station Air Rights Project Construction Incident

- On Friday, October 27, a steel truss was being lifted in place, lost control and knocked over the middle truss. A lift carrying workers was also knocked over.
- Incident occurred on the P6 level of the South Station tower in the area at the north end of the bus terminal.
- Three workers sustained non-life threatening injuries and were transported to the hospital.
- OSHA investigation currently underway.



The MBTA is committed to operating a safe, reliable and accessible transportation system.

In response to recent near misses on the Right of Way (ROW), the MBTA is implementing a new Advanced Mobile Flagger Program to reduce the risk of serious injury or death to workers on the ROW.



Advanced Mobile Flagging

The new Advanced Mobile Flagger Program will launch first on the Red Line in October, followed by the Blue, Orange, and Green lines.

How did we get here?



Near Misses



Implemented immediate safety measures and pilot worker ahead program on Green Line



More near misses



Restrict ROW access



Implement **ADVANCED MOBILE FLAGGER**

Adding an advanced flagger on the platform for every work crew to alert motorpersons

We will continue to take steps to implement long-term solutions that will increase worker safety on the ROW.

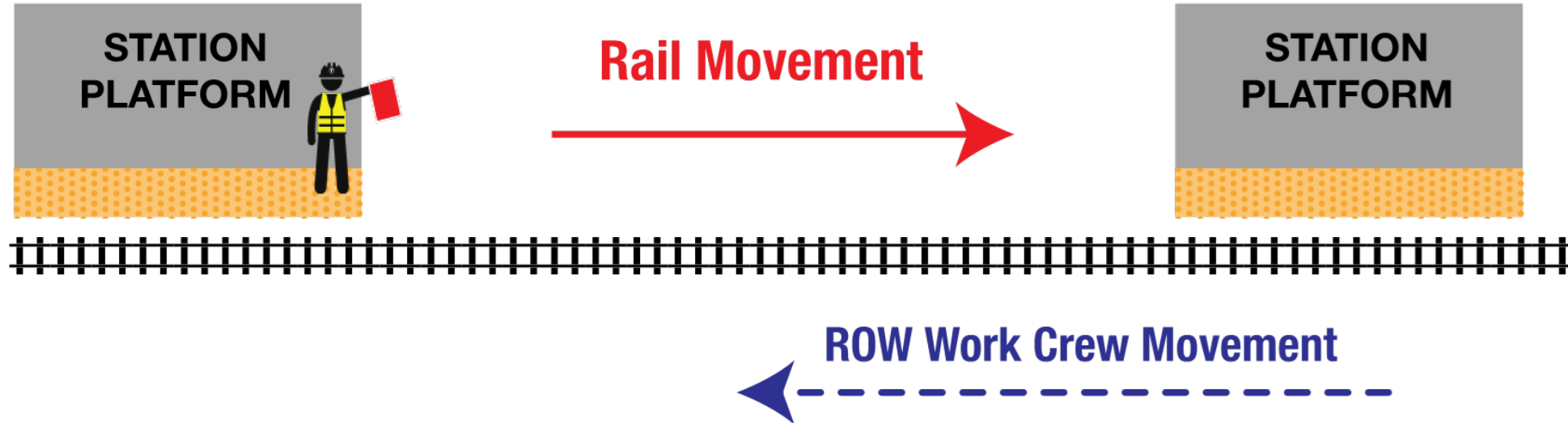


Advanced Mobile Flagger Location and Responsibilities

- AMF is positioned at the proper berthing location in advance of the Mobile Work Crew and in the direction of normal travel for a Rail Vehicle.
- Works with the ROW Flagger who is part of the crew.
- Informs the Motorperson of work crew personnel ahead.
- Performs radio checks with OCC and commences cautioning Motorpersons.
- Obtains Motorperson's acknowledgement of work crew ahead.
- Warns crew if any train fails to stop.

Advanced Mobile Flagging- AMF

AMF Station to Station movement

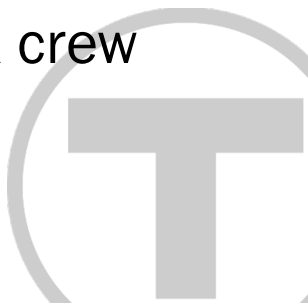


- Mobile Work Crews will walk in the opposite direction of normal traffic flow under the protection of the AMF.



AMF Procedures – AMF Script

- Once the Rail Vehicle is stopped and the Motorperson has initiated and confirmed the train doors have opened on the platform side, the Motorperson shall standby with the doors open and wait for the AMF's instructions. **AMFs shall read the script as follows:**
 - *There is a work crew ahead and there may be multiple work crews ahead.*
 - *Proceed at half the allowable line speed no greater than 20mph but bound by any speed restrictions in place.*
 - *Operate at restricted speed (HR34) in areas of limited visibility. In addition, sound your horn in successive short blasts.*
 - *Be prepared to stop when persons on the ROW are identified and obey signals from the ROW Flagger.*
 - *Ensure you reduce speed to no greater than 10 mph when passing all work crews.*
 - *Maintain 10 mph until your entire train vehicle safely passes the work crew.*
 - *Continue at half your allowable line speed until the next station.*
- The Motorperson must affirm/acknowledge to the AMF the presence of the work crew ahead before departing the station.



Questions?

