

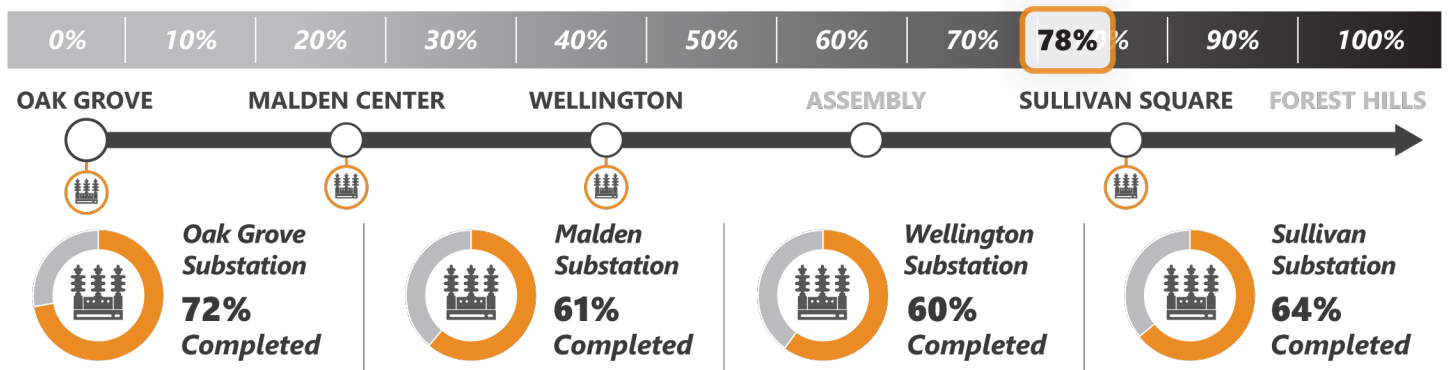
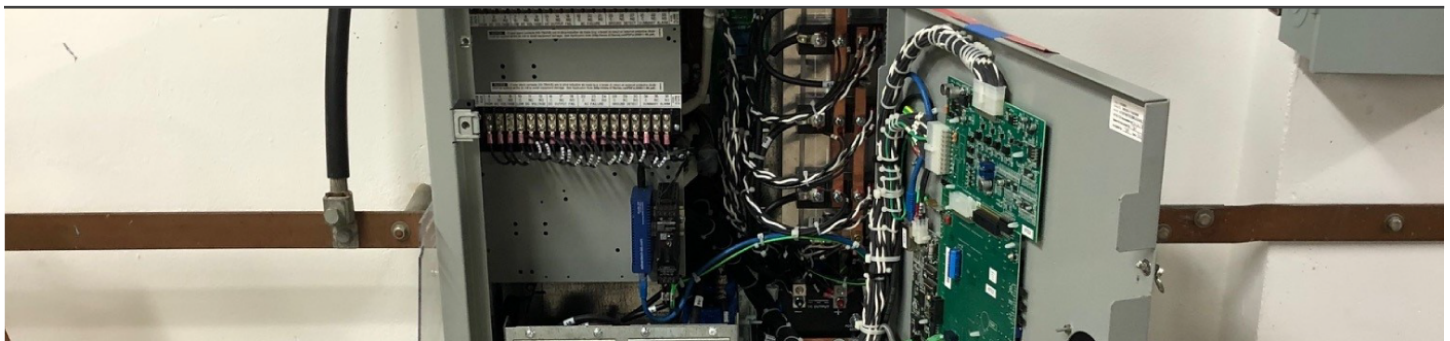
## Week in Review and Lookahead

### Friday, August 11, 2023

This week, we are pleased to announce that the [work to upgrade Wellington Yard is substantially complete!](#) While construction at Wellington Vehicle Maintenance Facility continues, upgrades made at Wellington Yard will accommodate new subway cars, reduce maintenance costs, and improve the ability to move more trains in and out of maintenance and back into service in a more efficient manner. These upgrades will also provide MBTA personnel that work in the yard with a safer, modernized work environment.



### Traction Power Substations



**Traction Power Substations:** Modernize the third rail power supply to reduce the risk of service disruptions; develop a power system capable of supporting additional Orange Line service

- ✓ **This Week** | At Oak Grove, crews continued installing control wiring at switch gear and worked on electrical connections. At Wellington, crews worked on battery backup system
- **Lookahead** | Crews will continue performing cable connections, installing electrical connections, and testing the new equipment

# Wellington Yard and Maintenance Facility Updates



21,895 Feet of Track



69 Units of Special Track



Traction Power & Signals



Wellington Yard: Upgrade Wellington Yard to increase service capacity, replace outdated infrastructure, and enhance safety

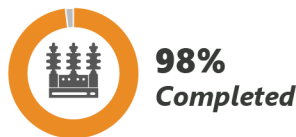
- ✓ **This Week** | Work at Wellington Yard has reached substantial completion. Crews will continue with punch list work, clean-up, and demobilization activities. [Click here](#) to watch a video about the upgrades to Wellington Yard



Building Upgrade



Power Substation



Train Wash



Maintenance Bays



Wellington Maintenance Facility: Modernize the Vehicle Maintenance Facility to improve vehicle maintenance, reduce downtime and customer wait times, provide cleaner trains, and deliver safer operations

- ✓ **This Week** | Crews poured concrete at track 19 and electricians installed operations controller push buttons at track 16
- **Lookahead** | Crews will continue working on tracks and at the electronics building

\*Schedule subject to change with weather conditions and in accordance with public health directives  
Project percentages represent the value of the installed work