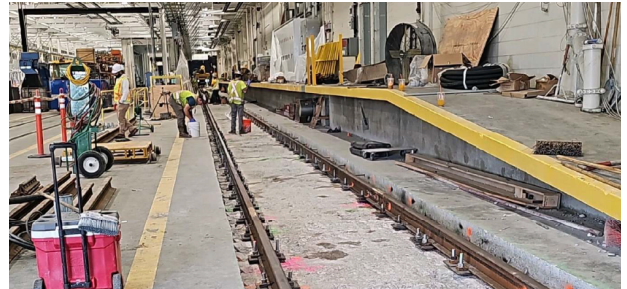


## Week in Review and Lookahead

### Friday, June 30, 2023

Work will continue on upgrades around the MBTA system during July, which will require service changes on [the Green, Red, and Orange Lines](#). The work to be completed will result in safer, more reliable service for our riders.



### Rail Fastener Replacement



**Tufts Curve: Northbound Side** OAK GROVE  
(65 fasteners)



**Tufts Curve: Southbound Side** FOREST HILLS  
(90 fasteners)



- ✓ **This Week** | Work on concrete repairs at Tufts Curve was paused this week. As a result of the new rail fasteners and other work that has been completed, the speed restrictions in the area have been removed
- **Lookahead** | Concrete repairs at Tufts Curve will be completed next week, and only minor punch list items will remain

# Wellington Yard and Maintenance Facility Updates



21,895 Feet of Track



69 Units of Special Track



Traction Power & Signals



Wellington Yard: Upgrade Wellington Yard to increase service capacity, replace outdated infrastructure, and enhance safety

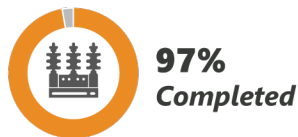
- ✓ **This Week** | Crews continued with punch list work and general clean-up of the yard. Light pole erection (originally scheduled for June 3) has been rescheduled for July 8
- **Lookahead** | Crews will continue working on punch list items and clean-up



Building Upgrade



Power Substation



Train Wash



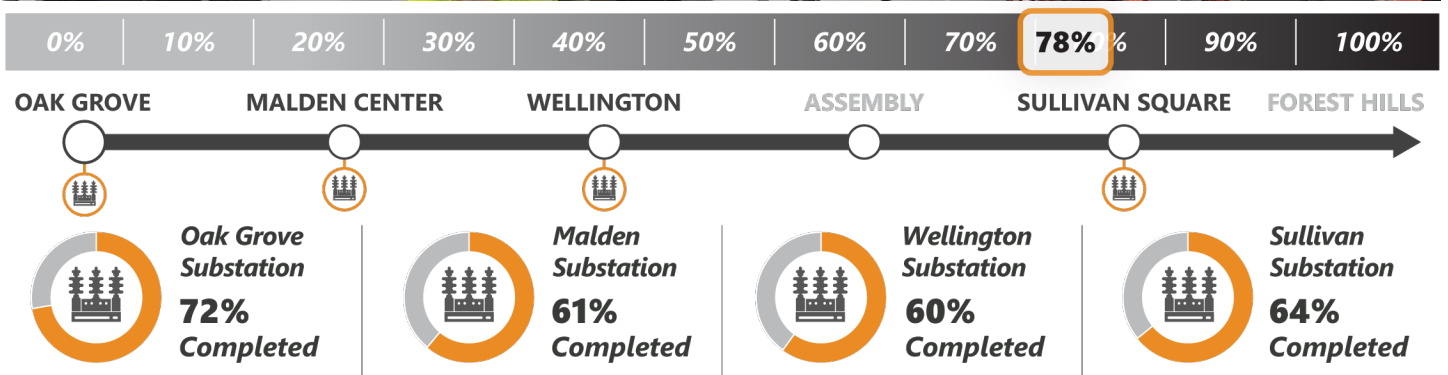
Maintenance Bays



Wellington Maintenance Facility: Modernize the Vehicle Maintenance Facility to improve vehicle maintenance, reduce downtime and customer wait times, provide cleaner trains, and deliver safer operations

- ✓ **This Week** | Crews installed anchors and prepared for grouting work at track 19
- **Lookahead** | Crews will continue working on track 19

# Traction Power Substations



**Traction Power Substations:** Modernize the third rail power supply to reduce the risk of service disruptions; develop a power system capable of supporting additional Orange Line service

- ✓ **This Week** | At Oak Grove, crews installed bus duct connections to the transformer
- **Lookahead** | Crews will continue performing cable connections and testing on the new equipment