

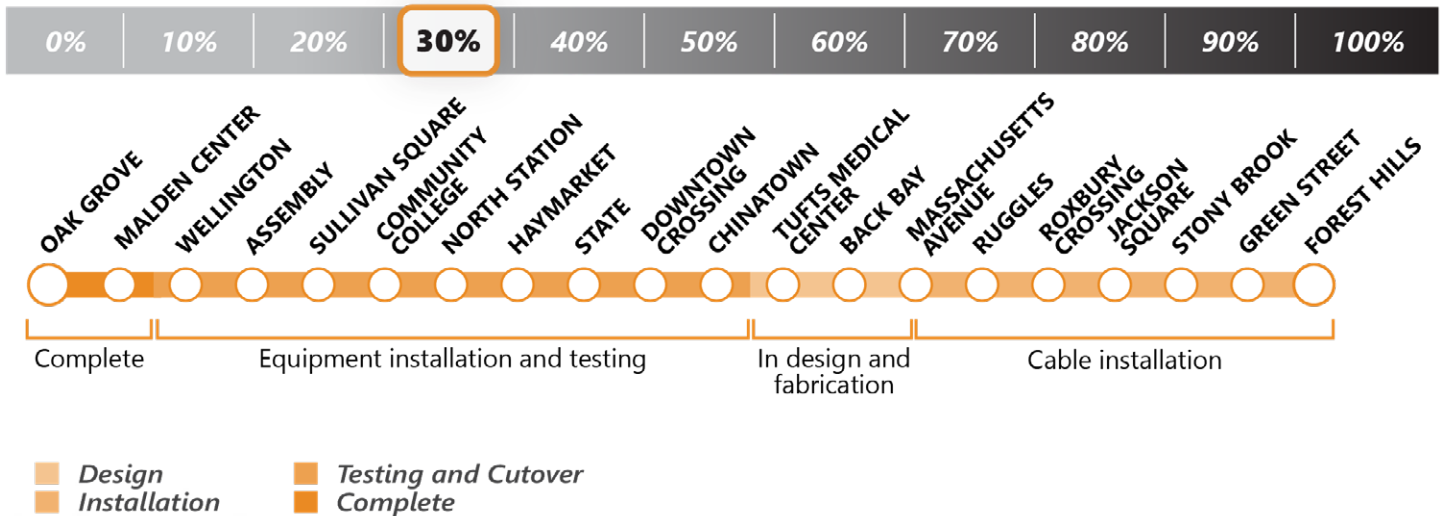
Week in Review and Lookahead

Friday, May 5, 2023

Work is continuing on Orange Line Transformation projects, with upgrades at Wellington Yard and Vehicle Maintenance Facility, and improvements to the traction power system ongoing.



Signal Upgrades



Orange Line Signals: Increase safety and reliability with modernized signals

- ✓ **This Week |** Work is temporarily on hold until further notice due to the prioritization of other work and MBTA Right-of-Way access constraints

Wellington Yard and Maintenance Facility Updates



21,895 Feet of Track



99% Completed

69 Units of Special Track



99% Completed

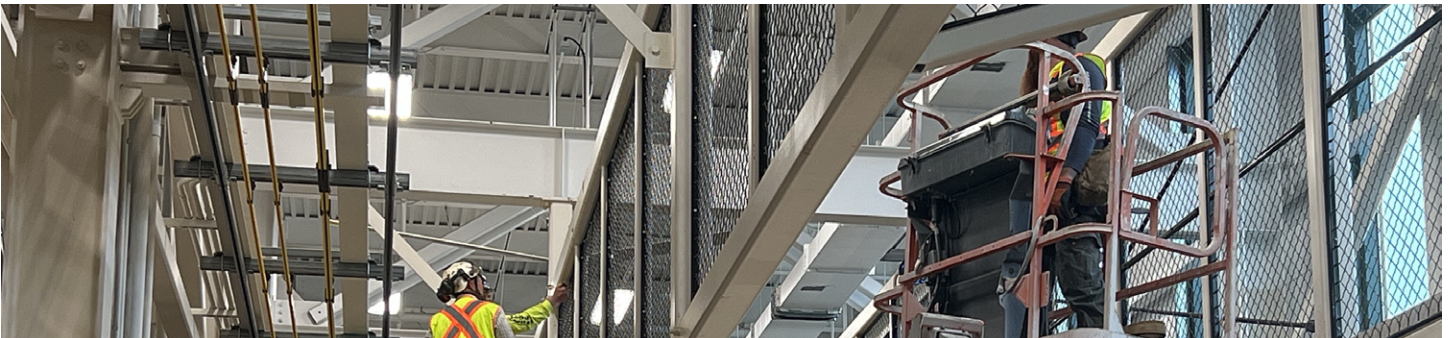
Traction Power & Signals



95% Completed

Wellington Yard: Upgrade Wellington Yard to increase service capacity, replace outdated infrastructure, and enhance safety

- ✓ **This Week** | Crews continued with punch list work and general clean-up of the yard
- **Lookahead** | Crews will continue working on punch list items and clean-up

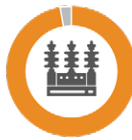


Building Upgrade



90% Completed

Power Substation



97% Completed

Train Wash



90% Completed

Maintenance Bays

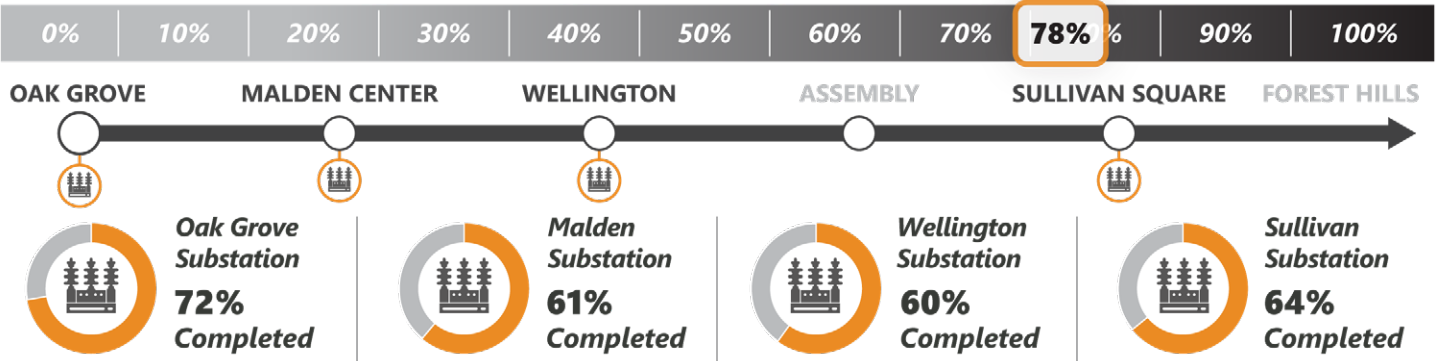


75% Completed

Wellington Maintenance Facility: Modernize the Vehicle Maintenance Facility to improve vehicle maintenance, reduce downtime and customer wait times, provide cleaner trains, and deliver safer operation

- ✓ **This Week** | Crews started installation of fall protection on the roof access catwalk at track 11
- **Lookahead** | Crews will continue working on the catwalk at track 11

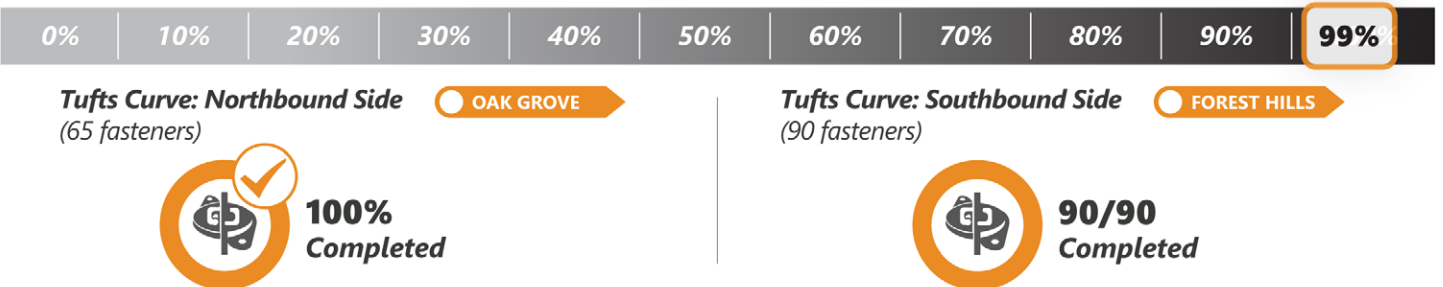
Traction Power Substations



Traction Power Substations: Modernize the third rail power supply to reduce the risk of service disruptions; develop a power system capable of supporting additional Orange Line service

- ✓ **This Week** | At Oak Grove, crews continued installing and testing cable connections to the transformer. At Sullivan, crews conducted point-to-point tests
- **Lookahead** | Crews will continue performing cable connections and testing on the new equipment

Rail Fastener Replacement



- ✓ **This Week** | Punch list work continued for the new rail fasteners installed at Tufts Curve
- **Lookahead** | Crews will continue working on punch list items

*Schedule subject to change with weather conditions and in accordance with public health directives
Project percentages represent the value of the installed work