



Massachusetts Bay Transportation Authority

K78CN06 – SCR Phase 1 Rt 18 Pedestrian Bridge, New Bedford

MBTA Board of Directors

Jennifer Tabakin, SCR Program Manager

December 15, 2022

Overview

- Today's Board action will provide approval for the construction of Rt. 18 Pedestrian Bridge in New Bedford



Construction Procurement

Project advertised on October 19, 2022

Engineer's Estimate was \$22,958,204

Bid Opening on December 8, 2022

7 Bids were received

\$21,296,000.00	Barletta Heavy Division, Inc
\$22,294,846.00	MAS Building and Bridge, Inc
\$22,398,346.00	JF White Contracting, Co
\$22,878,901.52	The Middlesex Corp
\$23,499,500.00	Skanska USA Civil Northeast
\$25,709,646.00	Manafort Brothers Incorporated
\$27,193,346.00	Aetna Bridge Company



Request of the MBTA Board of Directors

VOTED: To authorize the MBTA General Manager, or his designee, to award and execute MBTA Construction Contract No. K78CN06: South Coast Rail Phase 1 Rt 18 Pedestrian Bridge, New Bedford with Barletta Heavy Division, Inc., for an amount not to exceed \$21,296,000.00.



Appendix



Background

- Existing Bridge is not Accessible
- Team held 12 workshops with the City of New Bedford
- City of New Bedford will own and maintain the Pedestrian Bridge



City of New Bedford Design Goals

The Pedestrian Bridge Design will...

- ✓ ...be an Authentic Expression of New Bedford's Sense of Identity, Place and Character
- ✓ ...enhance the Prominent Downtown Waterfront Location of the Bridge – from a distance and up close
- ✓ ...integrate Functional Elements in a Cohesive Architectural Expression



Route 18 Pedestrian Bridge

- Network Tied Arch Pedestrian Bridge Over Rt 18
- Temporary Piers and Falsework
- Construction of Elevator Tower and Stairs – East Side
- Construction of Abutment and At-Grade Approach Plaza – West Side
- Various At-Grade Surface Improvements and Utility Work



Route 18 Pedestrian Bridge

- Signature Bridge
- Enhanced Site Lighting and Arch Lighting Design
- Connecting neighborhoods and Downtown to MBTA New Bedford Station



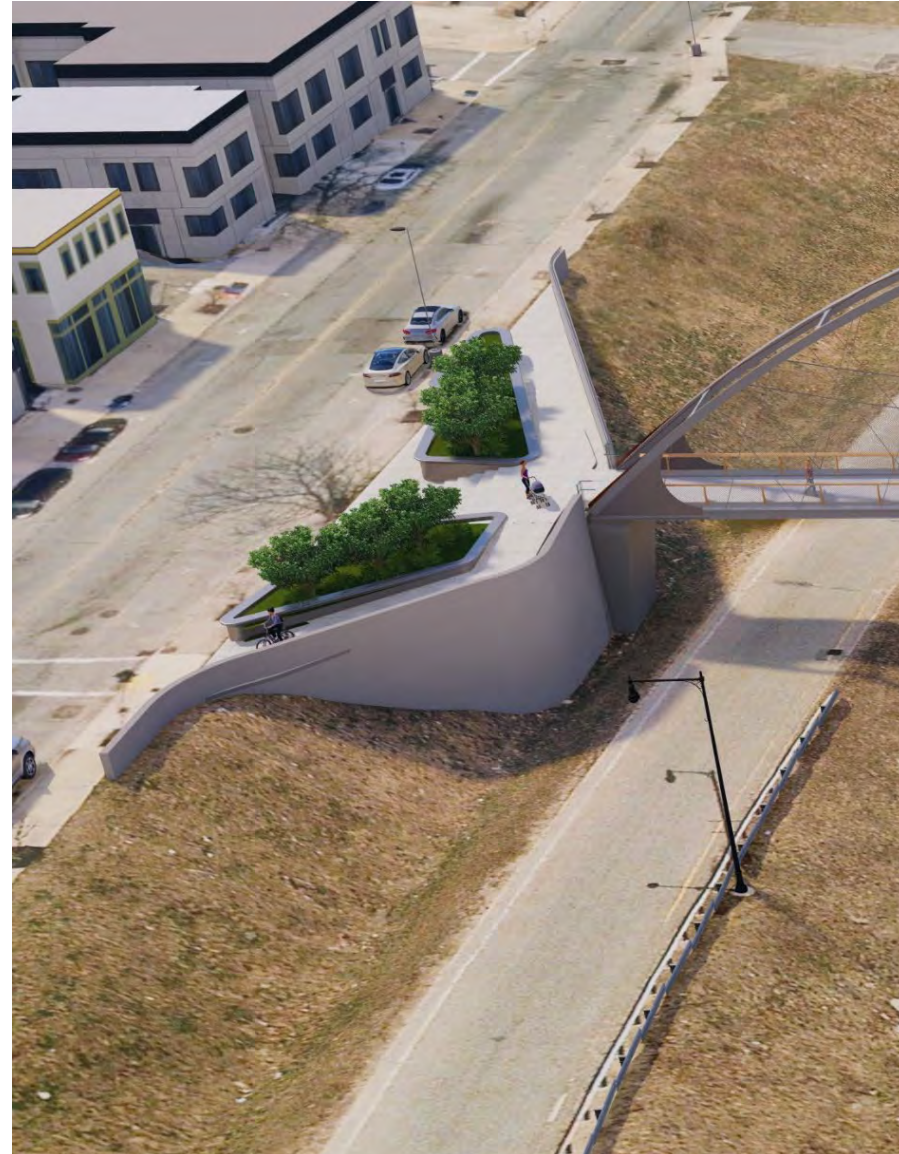
East Side Construction

- Elevator Tower
- Stairs with Bicycle Runnel
- Utility Room with Generator
- Two elevators for Redundancy
- Sidewalk Connections to Station
- Sidewalk along Acushnet
- Drainage Connection



West Side Construction

- West Abutment
- Construction of Retaining Wall
- Construction of Plaza and Walkways
- Planters for landscaping
- Replace Existing Concrete Sidewalk within Plaza Limits



Maintenance of Traffic/Workspace

- Working Hours Lane Closures
- Detours (9:00 PM – 5:00 AM)
- Coincident Detours of adjacent Streets or Route 18 NB and SB not allowed
- 2-Lane minimum Route 18 NB and SB at all times, except detours
- Purchase Street parallel parking within limits of work reserved for Contractor workspace
- MassHire side lot reserved for Contractor Workspace
- Non-travel way areas reserved for temporary bridge piers and staging
- Surface Restoration for portions disturbed by temporary facilities, staging, and contractor workspace operations



Alternate No. 1

- Demolition of Existing Bridge
- Sidewalk and Lighting along Pearl Street and Acushnet Avenue

