

# Orange Line Transformation

## Construction Project Updates



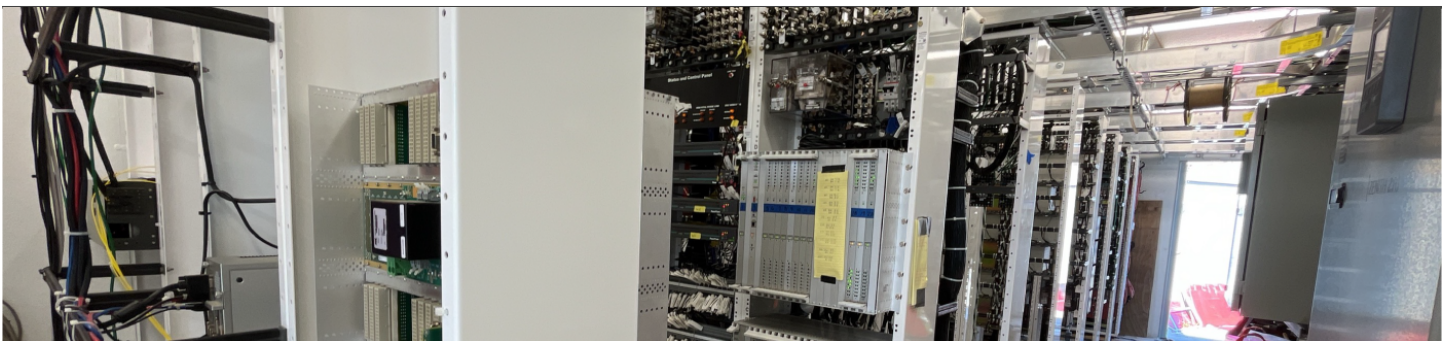
### Week in Review and Lookahead

Friday, November 4, 2022

Progress continued on [Orange Line Transformation](#) projects this week, including Signal Upgrades, Traction Power upgrades, and construction at Wellington Yard and Vehicle Maintenance Facility



### Signal Upgrades

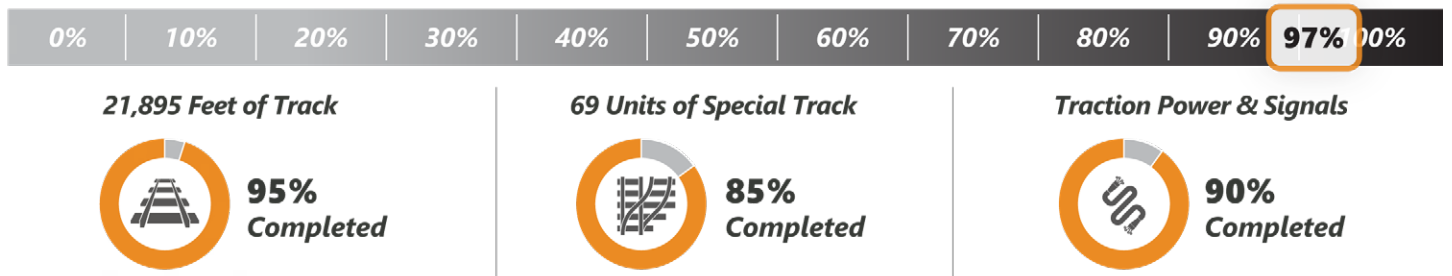


[Orange Line Signals](#): Increasing capacity, through reducing headways with modernized signals

- ✓ **This Week** | Crews worked at the south side of Wellington Yard to convert from the old signal system to the new system. Equipment installation has begun at Community College and Sullivan Square locations. Wayside cable is being installed along the Southwest Corridor
- **Lookahead** | Crews will continue signal testing at the Wellington Yard. Equipment installations and wiring will continue at Community College and Sullivan Square. Cable installation and junction box replacement will occur at night along the Southwest Corridor

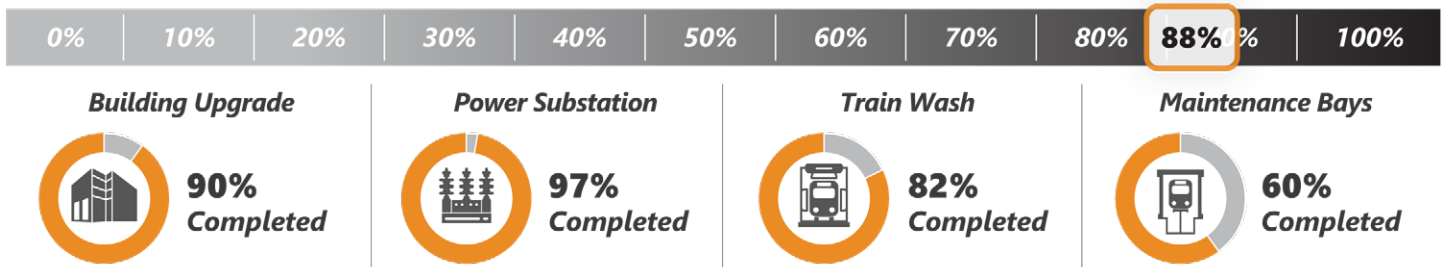
\*Schedule subject to change with weather conditions and in accordance with public health directives  
Project percentages represent the value of the installed work

# Wellington Yard and Maintenance Facility Updates



Wellington Yard: Upgrade Wellington Yard to increase service capacity, replace outdated infrastructure, and enhance safety.

- ✓ **This Week** | Crews worked at the south side of Wellington Yard to convert from the old signal system to the new system
- **Lookahead** | Technicians will continue signal testing

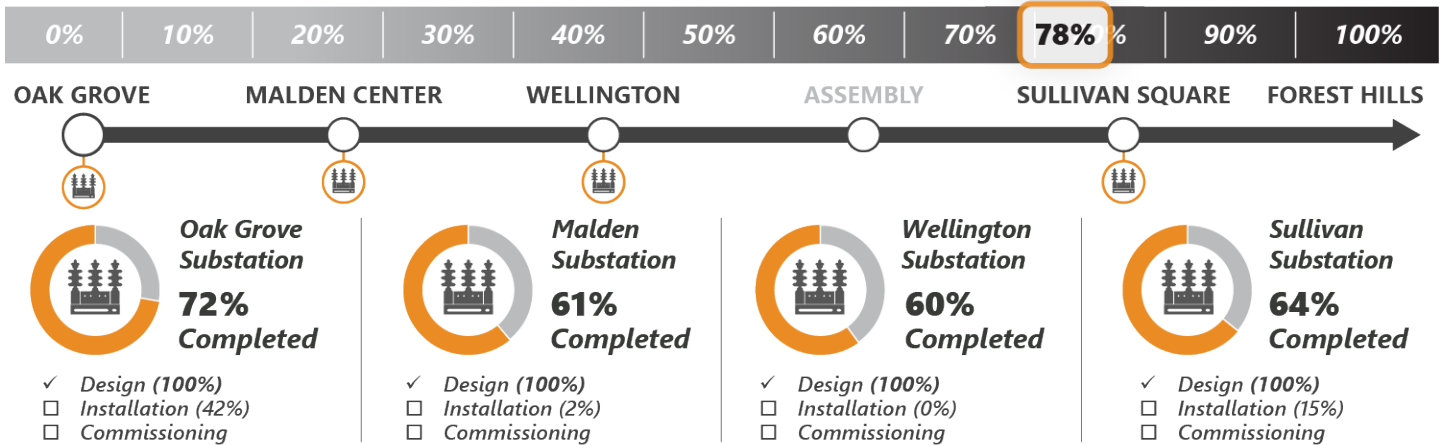


Wellington Maintenance Facility: Modernize the Vehicle Maintenance Facility to improve vehicle maintenance; reducing customer wait times, provide cleaner cars, and deliver safer operations.

- ✓ **This Week** | Crews stripped concrete forms at track 13, electricians worked on the fire alarm, and painters touched up catwalks at zone 7
- **Lookahead** | Crews will apply sealer to complete concrete work at track 13

\*Schedule subject to change with weather conditions and in accordance with public health directives  
Project percentages represent the value of the installed work

# Traction Power Substations



**Traction Power Substations:** Modernize the third rail power supply to reduce the risk of service disruptions; develop a power system capable of supporting additional Orange Line service

- ✓ **This Week** | At Oak Grove crews continued prepping the new floor by scarifying
- **Lookahead** | Crew will be applying dielectric floor once scarifying is completed