



**Massachusetts Bay
Transportation Authority**

Winchester Center Station Accessibility Improvements: Construction Update

Town of Winchester Select Board Meeting

October 24, 2022

Nathan Rae, Senior Project Manager, MBTA Capital Delivery

Project Overview

- Full Station Reconstruction:
 - Two new fully accessible, high-level, side platforms with canopies.
 - Three new elevators, two new ramps and three sets of covered stairs.
 - New lighting, signage and wayfinding security cameras, and other amenities.
 - New tracks, ties, ballast, bridge plates and communication duct banks.
- Total Project Cost: \$50 Million



Recent Construction Activity



Demolition Work at the Laraway Lot
(July 2022)

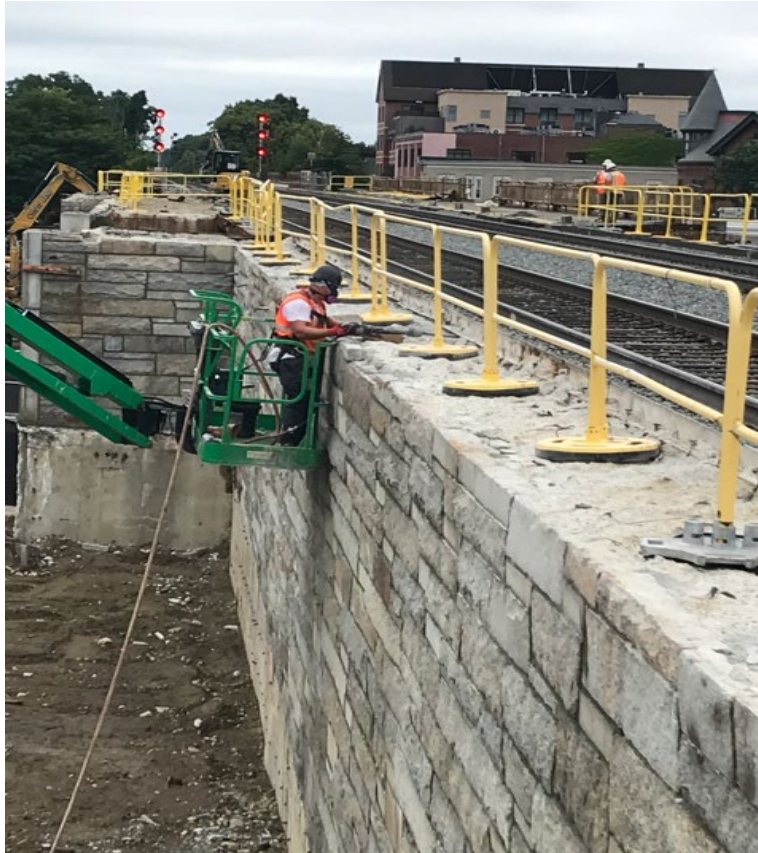


Demolition Work at the Waterfield
Bridge
(July 2022)



Forming Pile Caps and Grade Beams at
Aberjona Lot
(August 2022)

Recent Construction Activity



Granite Stone Removal at Laraway Lot
(August 2022)



Granite Stone Removed and Demo at
Laraway Lot with dust control
(August 2022)



Demolition at Northeast Ramp behind
the Thompson Street buildings
(September 2022)

Recent Construction Activity



Drilled Shafts for Elevator at the Waterfield Lot (September 2022)



Start of Ramp Foundation at the Aberjona Lot (October 2022)



Elevator Foundation at Aberjona Lot (October 2022)

Planned Construction Schedule: Fall – Winter 2022

Activity	Oct	Nov	Dec
Complete Demolition Phase	[Activity spans Oct, Nov, and Dec]		
Aberjona and Waterfield Sections: <ul style="list-style-type: none"> - Drill Shafts and Install Micropiles - Construct Platforms, Ramps and Headhouse 	[Activity spans Oct, Nov, and Dec]		
Quill Rotary Section: Install Micropiles		[Activity spans mid-Oct to mid-Nov]	
Laraway Section: Begin Construction of Ramp, Drill Shafts	[Activity spans mid-Oct to mid-Nov]		
Aberjona and Waterfield Sections: Elevator Foundation and Structure Preparation	[Activity spans Oct, Nov, and Dec]		

Travel Alternatives from Winchester Center Station



Route 134 Bus

- North Woburn to Wellington Station (Orange Line).
- 0.2 Miles (about a 4-minute walk) from Winchester Center Station to stop located at corner of Main and Vine Streets.

Wedgemere Station

- North Station (Boston) to Lowell Station (Lowell Line)
- 0.7 Miles (about a 3-minute drive) from Winchester Center Station.
- 0.6 Miles (about an 11-minute walk) from Winchester Center Station by Tri-Community Greenway.
- Walk, bike, or drive (parking and bike storage available).

Public Outreach

- **Upcoming Outreach Activities:**
 - **Select Board Meeting: December 2022**
 - **Public Meeting: TBD - December 2022**
- **Project Email Address:**
winchesterstation@MBTA.com
- **Construction Hotline: (781) 218-9717**
For construction-related concerns and questions.
- **Project Website:**
www.mbta.com/winchesterstation



Recent Feedback

From a Station abutter:

I just wanted to tell you about your foreman and his team. Wow, what a great job they did. They protected my roof from debris, and with the little space they have it's amazing. They don't have much room to spare, and they did a great job. I appreciate you and your team on a wonderful job. Thank you!