

Orange Line Transformation

Construction Project Updates



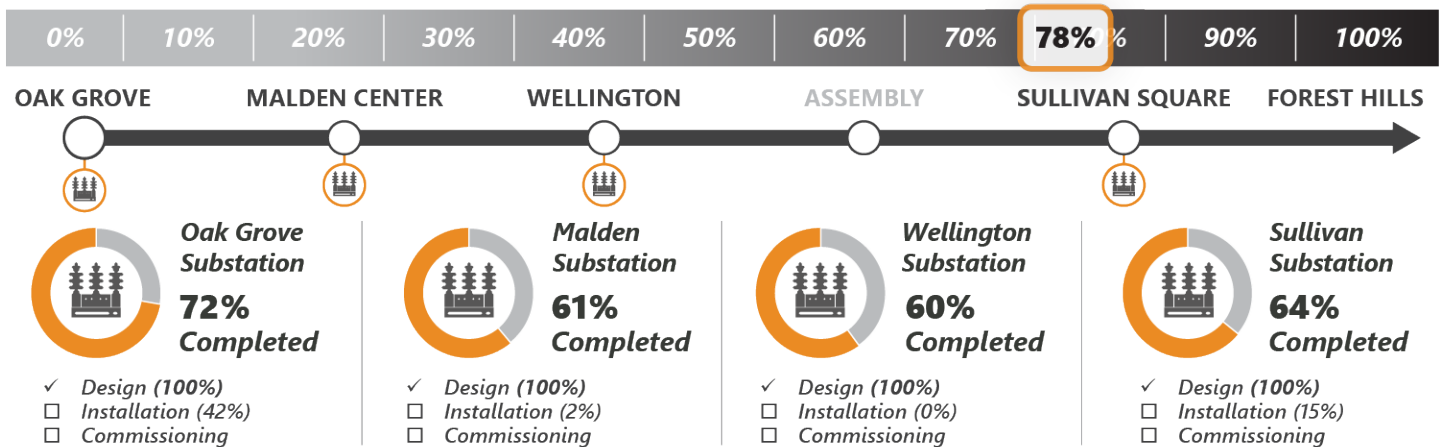
Week in Review and Lookahead

Friday, October 7, 2022

Work continued this week on Orange Line Transformation projects, including Traction Power upgrades and construction at Wellington Yard and Vehicle Maintenance Facility. Read below for the latest updates



Traction Power Substations

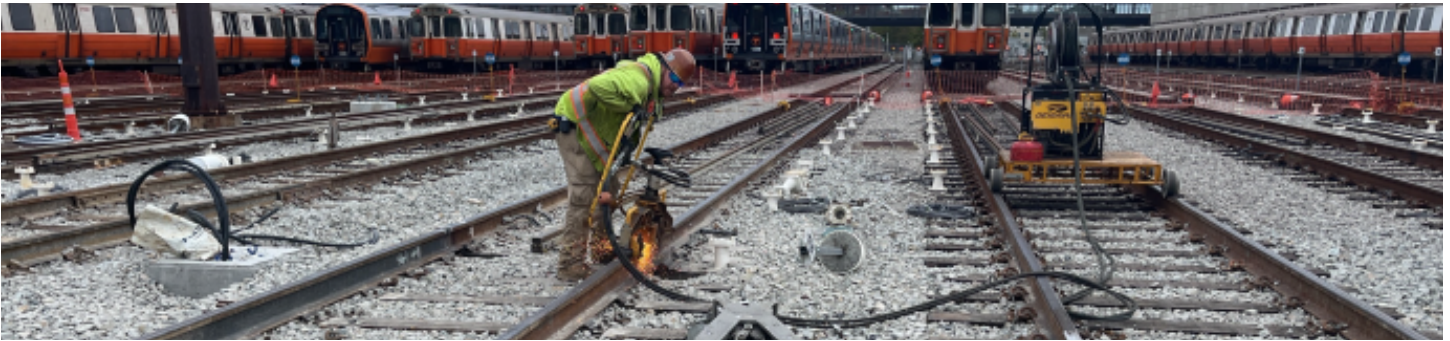


Traction Power Substations: Modernize the third rail power supply to reduce the risk of service disruptions; develop a power system capable of supporting additional Orange Line service

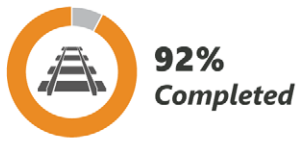
- ✓ **This Week** | At Oak Grove crews installed basement conduits
- **Lookahead** | Ongoing conduit installation at Oak Grove

*Schedule subject to change with weather conditions and in accordance with public health directives
Project percentages represent the value of the installed work

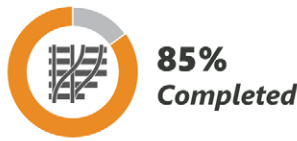
Wellington Yard and Maintenance Facility Updates



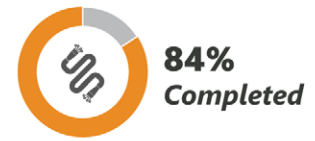
21,895 Feet of Track



69 Units of Special Track

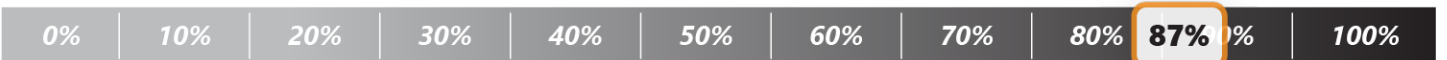


Traction Power & Signals



Wellington Yard: Upgrade Wellington Yard to increase service capacity, replace outdated infrastructure, and enhance safety.

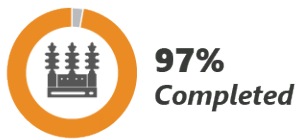
- ✓ **This Week** | Crews continued with new track, switch machine and wires installation in the south yard of Wellington
- **Lookahead** | Crews will continue replacing yard tracks in the south yard



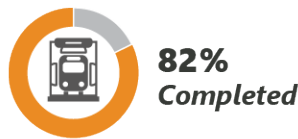
Building Upgrade



Power Substation



Train Wash



Maintenance Bays



Wellington Maintenance Facility: Modernize the Vehicle Maintenance Facility to improve vehicle maintenance; reducing customer wait times, provide cleaner cars, and deliver safer operations.

- ✓ **This Week** | Crews installed new electrical lighting and fire alarm systems and replaced tracks in the facility
- **Lookahead** | Electricians and plumbers continue working on fire alarm system replacement. Preparing to install new rail in the facility

*Schedule subject to change with weather conditions and in accordance with public health directives
Project percentages represent the value of the installed work