



# **Symphony Station Accessibility Improvements**

---

*Virtual Public Meeting*

Thursday, October 21, 2021

## Virtual Meeting | Overview



- Use the “**Q&A**” button to submit a typed question or comment
- Press the “**Raise Hand**” button to share your question or comment verbally. Wait for the moderator to recognize and unmute you before speaking.
- If you have joined by phone only, you may “raise your hand” by pressing the star button and then nine (\*9)

*After you speak, we will lower your hand and you will be muted to allow the team to respond and provide opportunities for others to participate*

**Comments may also be sent to [GLT@mbta.com](mailto:GLT@mbta.com)**

# SAFETY MOMENT

*Wear a face covering when riding public transit*

*Ride Safer*



# Agenda | *Today's Meeting*

1. **Introductions** | *Green Line Transformation*
2. **Overview** | *Existing Conditions*
3. **Design** | *Station Improvements*
4. **Construction** | *Utilities, Excavation, Installation*
5. **Communication** | *Keeping you informed*
6. **Q&A**

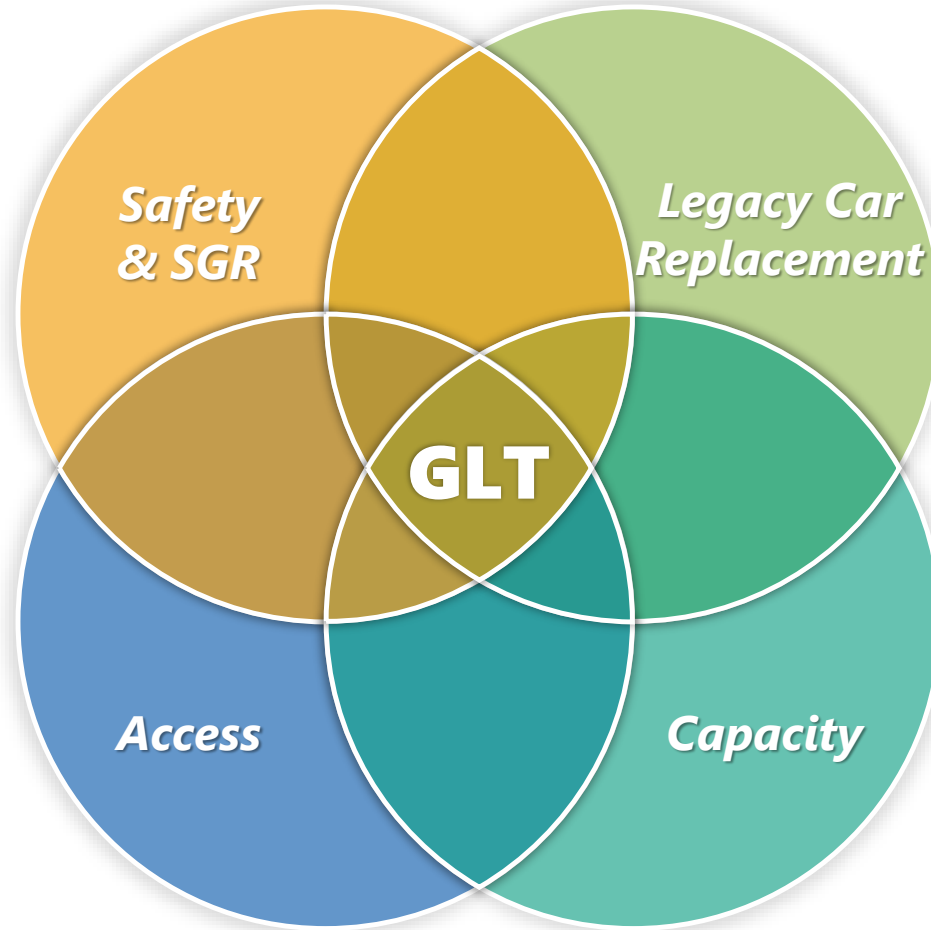


# Levels of Transformation

*Achieving Multiple Goals*

|   |  |
|---|--|
| <b>Level 0</b>  | <b>Safety &amp; State of Good Repair (SGR)</b> |
| <b>Transformative Outcomes</b>  |  |
| <ul style="list-style-type: none"> <li>• Minimize risk of service disruptions</li> <li>• Reduce speed restrictions</li> <li>• Bring assets to state of good repair</li> </ul> |  |

|   |                            |
|---|----------------------------|
| <b>Level 1</b>  | <b>Accessible Stations</b> |
| <b>Transformative Outcomes</b>  |                            |
| <ul style="list-style-type: none"> <li>• New or upgraded platforms</li> <li>• Compliant height, width &amp; slope</li> <li>• Barrier-free pathways &amp; wayfinding</li> <li>• Detectable warning panels</li> </ul> |                            |



|   |                               |
|---|-------------------------------|
| <b>Level 2</b>  | <b>Legacy Car Replacement</b> |
| <b>Transformative Outcomes</b>  |                               |
| <p>Operate and maintain single Type 10s</p> <ul style="list-style-type: none"> <li>• More <b>efficient</b> O&amp;M</li> <li>• 100% of Green Line trains <b>accessible</b></li> <li>• More <b>equitable</b> across the Green Line</li> </ul> |                               |

|   |                           |
|---|---------------------------|
| <b>Level 3</b>  | <b>Increased Capacity</b> |
| <b>Transformative Outcomes</b>  |                           |
| <p>Additional vehicles and infrastructure for two-car Type 10 operation</p> <ul style="list-style-type: none"> <li>• Increase core capacity of subway</li> <li>• Reduce headways and journey time</li> <li>• Expand yards and facilities</li> </ul> |                           |



## Level 0: Safety & State of Good Repair

*Work completed over the past two (2) years*

- ✓ Worked all branches **(B, C, D, E)**
- ✓ Renewed **10 miles of Track**
- ✓ Upgraded **18 Intersections**
- ✓ Replaced **20 turnouts and crossovers**
- ✓ **Fenway Portal Flood Protection**



# Accessible Stations | Short-Term Improvements We're Making (0-5 years)



## Over 20 Modernized Accessible Green Line Stations

### Under Construction



**B Branch Consolidation**  
*two new accessible stations*



**Brookline Hills**  
*accessibility improvements*

*Symphony Station Accessibility Improvements*

### Design



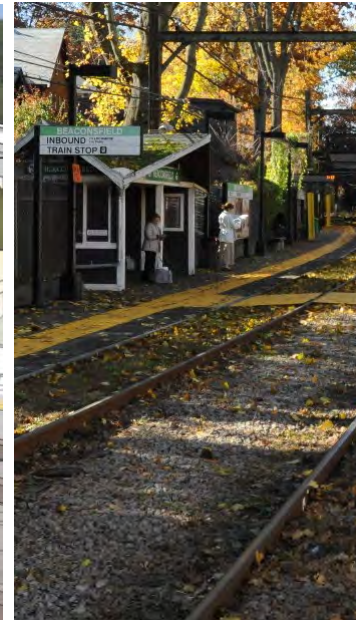
**Symphony Station**  
*elevators, platforms*



**Hynes Station**  
*elevators, platforms*



**Newton Highlands**  
*ramps, new access points*



**D Branch Platform Upgrades**  
*at Waban, Eliot, Chestnut Hill, Beaconsfield*

### Planning



**Interim Surface Improvements**  
*14 B, C Stations*



## *Symphony Station*

---

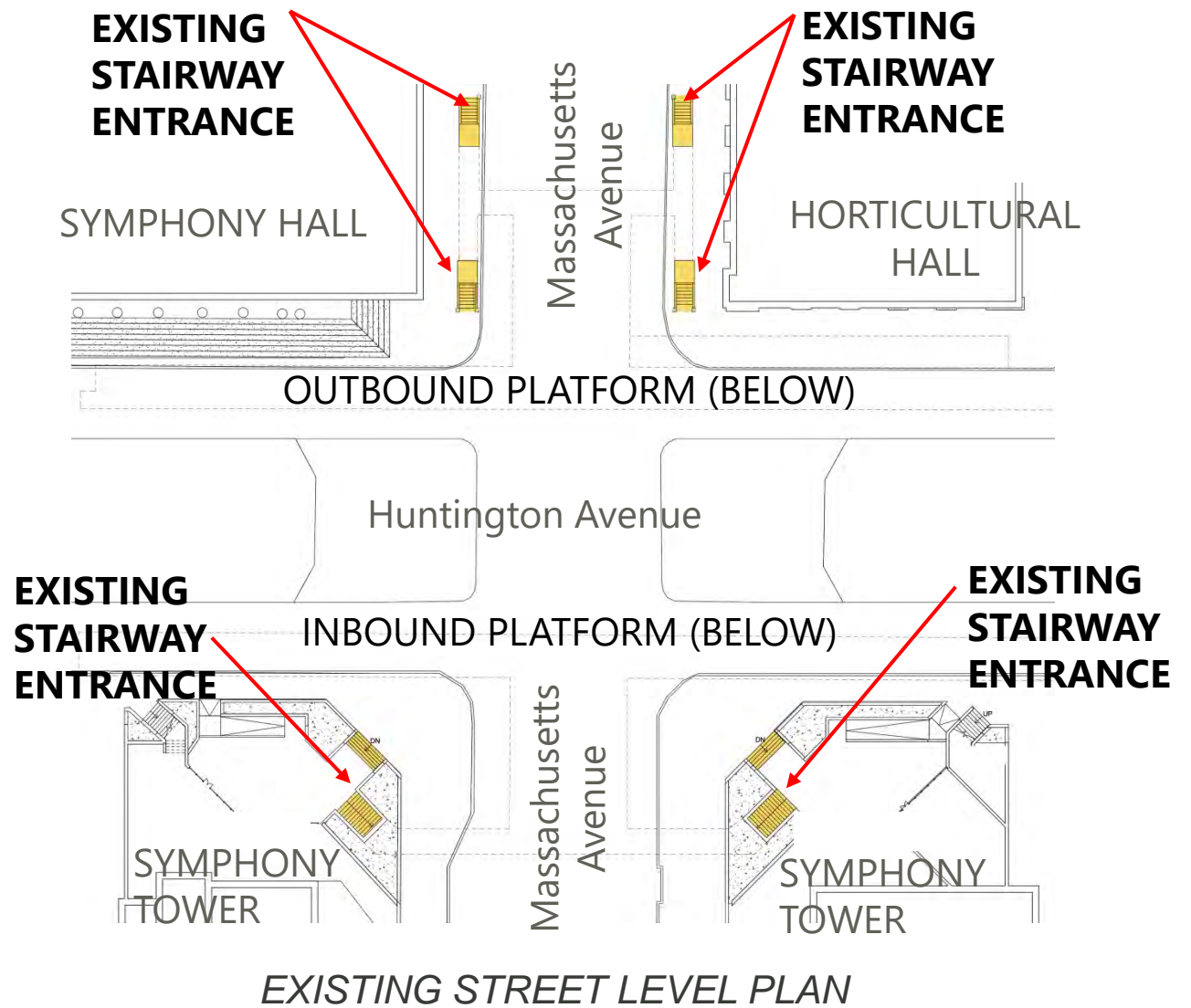
# Existing Conditions





# Symphony Station | Existing Conditions – Street Level

- **Four stairway** entrances at street level for **outbound platform**
- **Two stairway** entrances at street level for **inbound platform**
- Inaccessible entrance/exit to platforms below

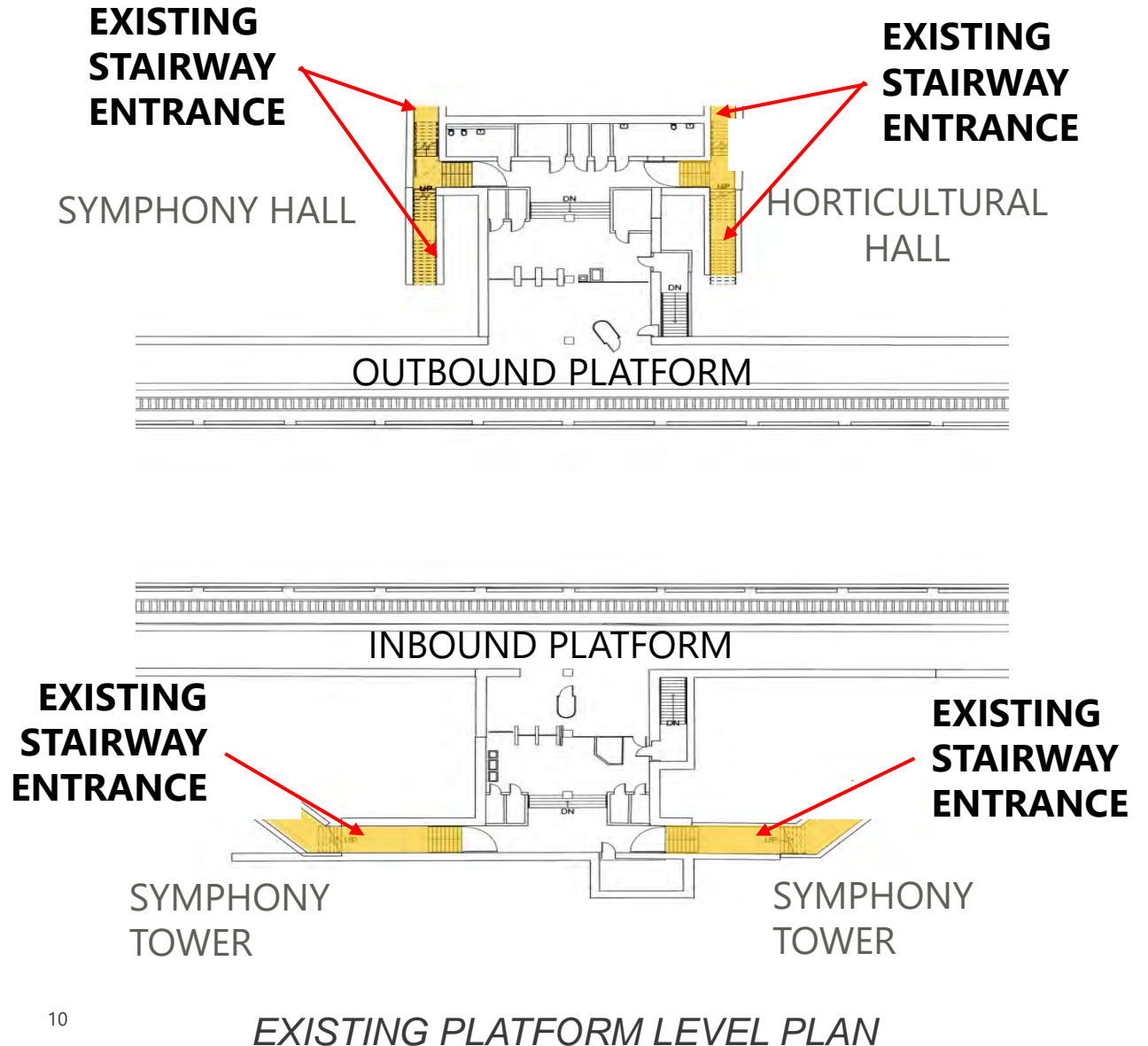


# Symphony Station | Existing Conditions – Platform Level

- **Stair access only from street**
- **Platforms too low** for new trains
- Inadequate egress
- Non-functioning restrooms at outbound
- No restrooms at inbound platform
- Inadequate emergency lighting



STATION PLATFORM





## *Symphony Station*

---

## Station Improvements



## Overview | Project Overview

Make Symphony **accessible** and improve its integration with the surrounding area.

- Install **4 new elevators** (street to platform)
- **Raise platforms** to 8 inches (accessible)
- Improve **stairs, egress, areas of refuge**
- Add new accessible **restrooms**
- Upgrade **lighting**, fixtures, finishes, signage

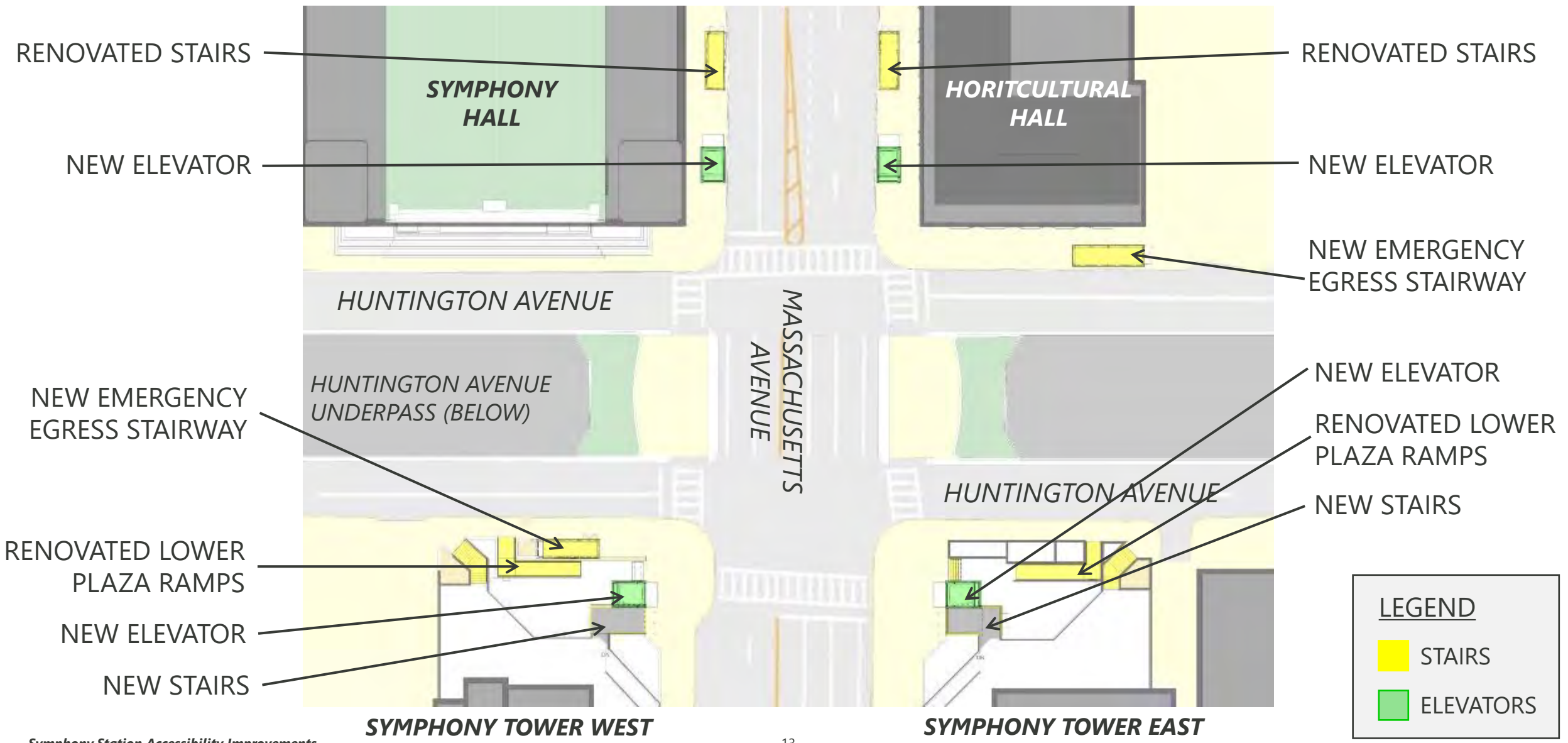


*Symphony Station | Northbound Entrance*

### **Project Status:**

- ✓ 20% (Aug '17), 30% (Feb '20), 75% Design (Mar '21)
- ❑ 100% Design – **Dec 2021**
- ❑ Estimated Construction Start – **Spring 2022**

# Architectural Design | Surface Improvements



# Symphony Station | New Elevator & Stair at Boston Symphony Orchestra (BSO)

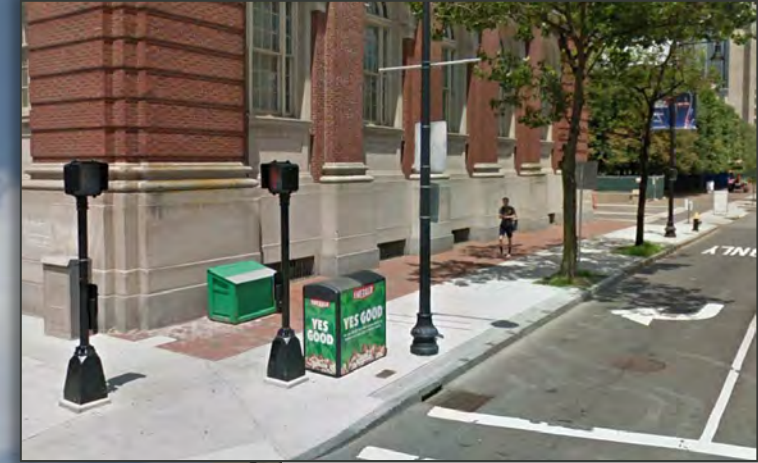


## *Elevator Buttons*

- *Metal halo*
- *Light in center*



# Symphony Station | *New Egress Stair, Elevator & Stair at Horticultural Hall*



***Current sidewalk at Horticultural Hall along Huntington Ave***

- Brick pavers along Horticultural Hall will be restored after construction

# Symphony Station | Inbound Elevator & Stair Symphony Tower East



## East Lower Plaza Improvements

- New accessible ramps and new stairs to the lower plaza
- Replacement of brick with concrete pavers
- New bike racks



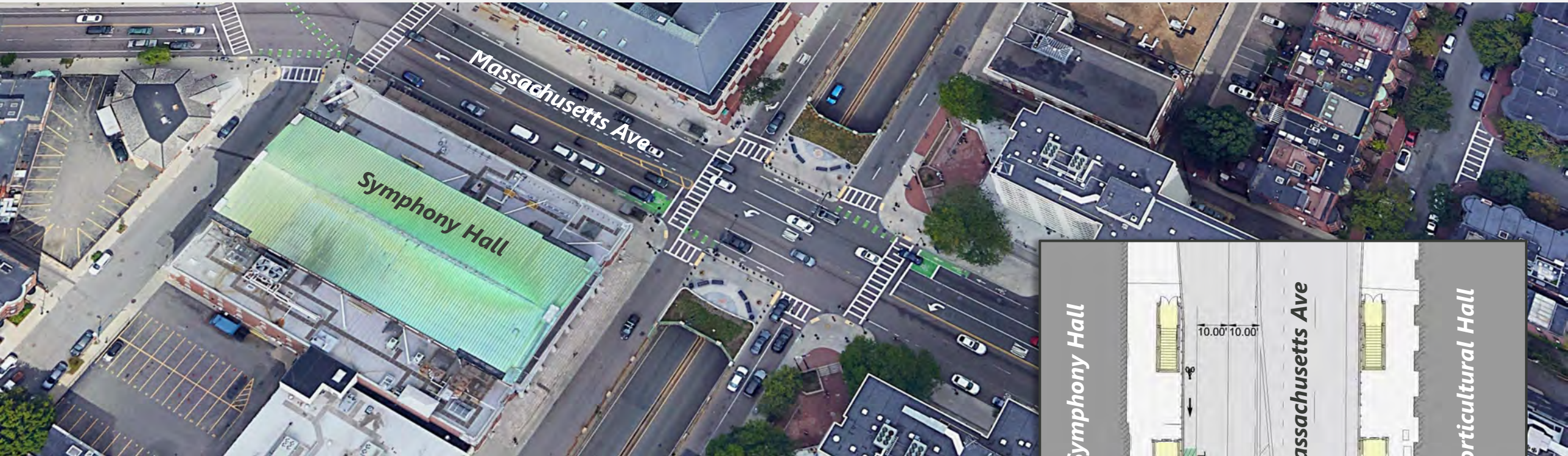
# Symphony Station | Inbound Elevator & Stair Symphony Tower West



## West Lower Plaza Improvements

- New accessible ramps and new stairs to the lower plaza
- Replacement of brick with concrete pavers
- New bike racks

# Ongoing Design Coordination | Massachusetts Ave and Huntington Ave



*The Symphony Station design will not preclude work needed to redesign the bike lanes in the future*

- Bollards will be removable for future redesign of the City of Boston **bike lanes**



**Lane Configuration**

# Architectural Station Improvements | Customer Journey



*Symphony Tower West*

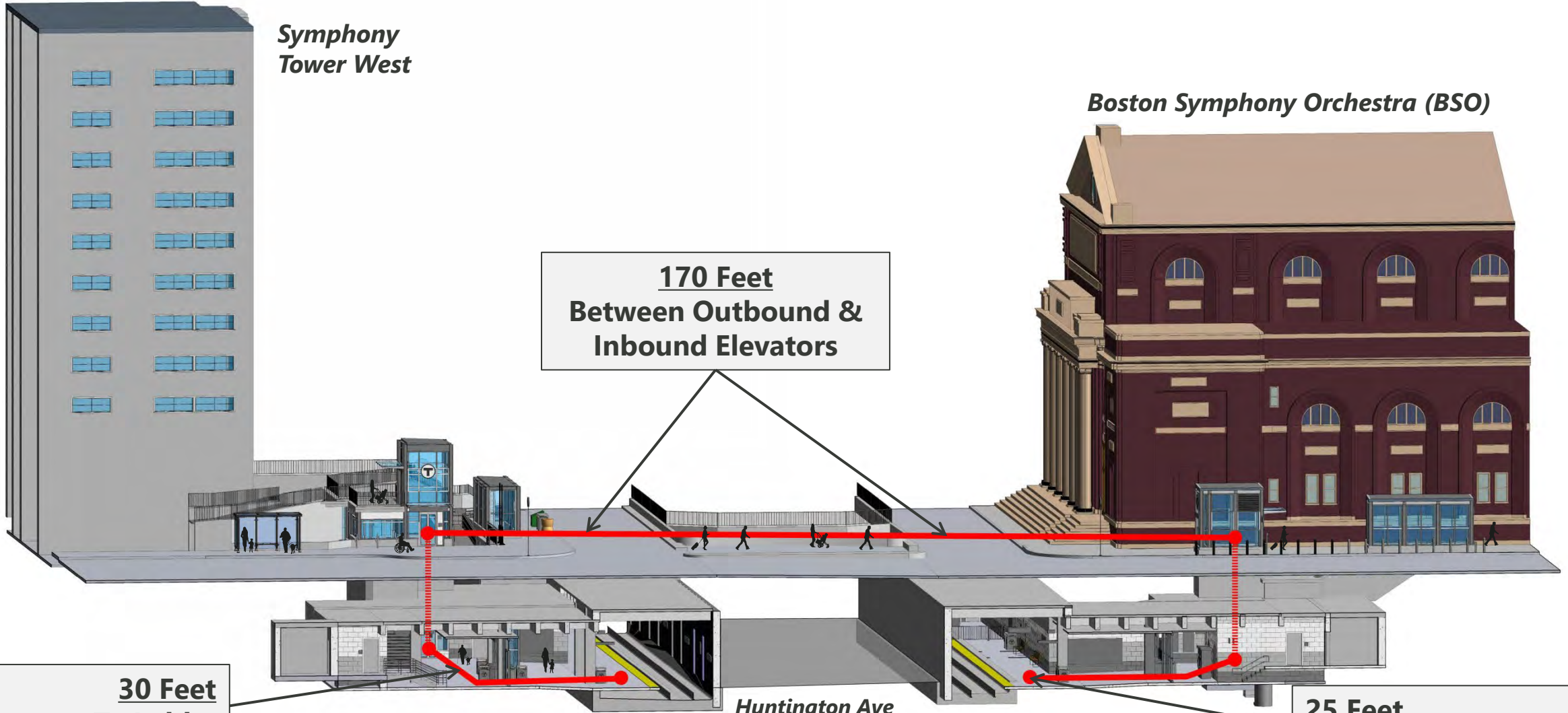
*Boston Symphony Orchestra (BSO)*

**170 Feet  
Between Outbound &  
Inbound Elevators**

**30 Feet  
Elevator To Lobby**

*Huntington Ave  
Underpass*

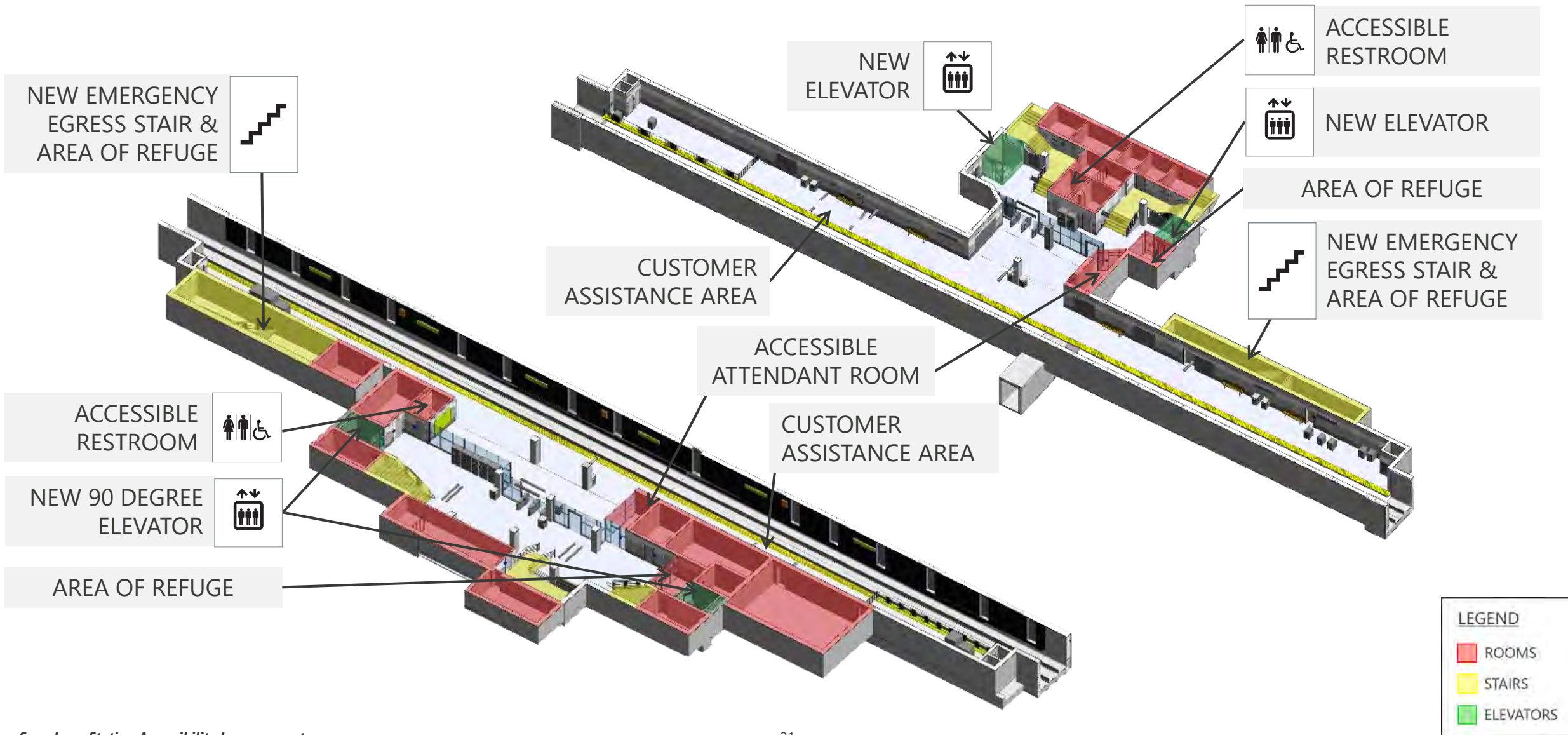
**25 Feet  
Lobby To Platform**



# Symphony Station | Inbound Lobby (Symphony Towers Side)



# Architectural Station Improvements | *Inbound and Outbound Platforms*





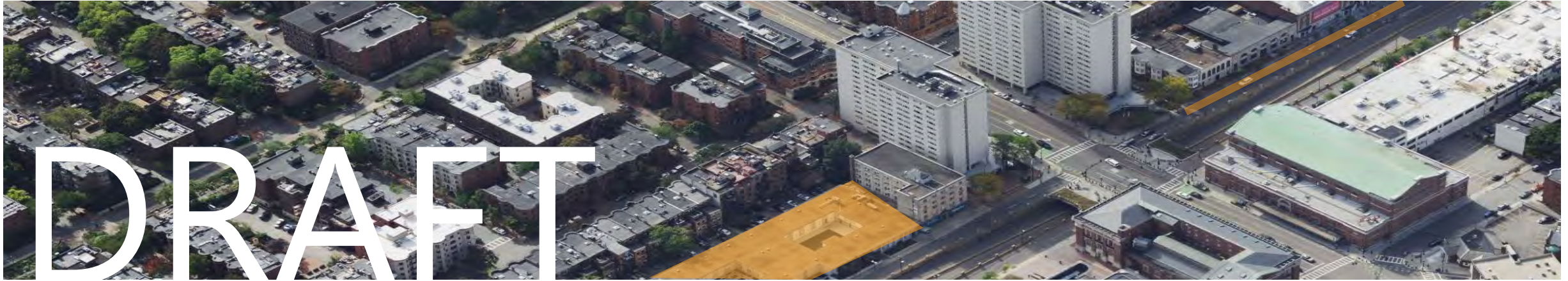
*Symphony Station*

**Construction**



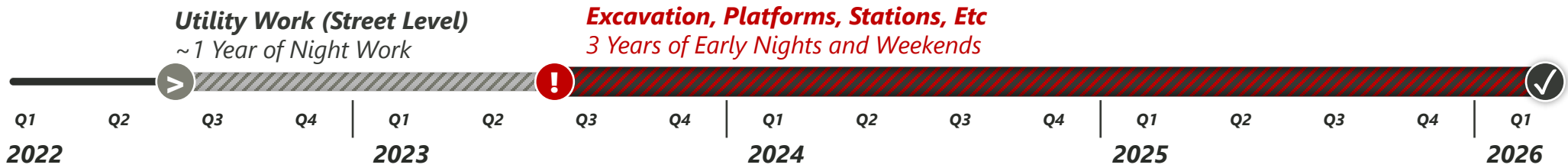
# Construction Impacts | Timeline for Delivering Upgrades

*First, relocate all existing utilities (nights). Then close station for 1.5 Years (some weekends)*



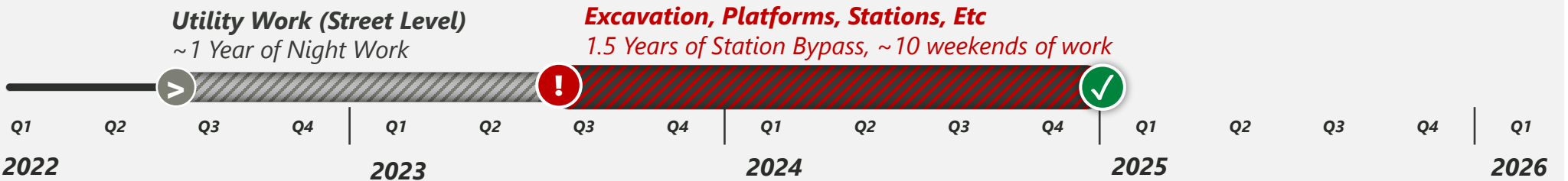
## Traditional Case

Early Access (9pm to 5am)  
and Weekends Only



## Station Bypass

Close Symphony  
for 1.5 Years



# Construction Impacts | *How We will Deliver Upgrades*

## Early Access, Weekends for 3 Years

- ✓ **Station remains open**, peak periods (daytime)
- ⊖ Longer overall project duration
- ⊖ Impacts along the entire line (Heath – Prudential)
- ⊖ Requires more internal resourcing (power, busing)
- ⊖ Some work (concrete curing) could require closure



## Close Station for 1.5 Years



- ✓ **Keeps Service Running**, only impacting those at Symphony (1,600 daily, pre-COVID)
- ✓ Improves efficiency, allowing for **multiple shifts**
- ✓ **Reduces** overall duration of the impact
- ✓ Saves internal resources (e.g., power, busing costs)
- ⊖ Symphony Riders use alternative stations/service
- ⊖ Will require a few weekends for platform work





# Construction Impacts | *Minimizing Inconvenience to our Community*

- **Noise and Vibration** mitigation and monitoring
- Maintain **Path of travel** for pedestrians/cyclists will be maintained
- Use of **Police details** to guide traffic
- Limit use of any percussive equipment (pile-driving)
- **Working** two-day shifts during the day
- Coordinating around **major events and concerts**
- **Supporting local business** during construction



*Symphony Station | Southbound Entrance (Outbound)*



*Symphony Station | Northbound East Plaza Entrance (Inbound)*



*Example of police details*

# Alternate Service | What Riders Can Expect During Station Closure



## Station Closure (Bypass):

- Riders would use **Northeastern, Prudential, Mass Ave** (OL, 500 ft), **Bus #39**, or **Bus #1** for daily commuting needs
- **An accessible shuttle** will operate between Prudential, Symphony and Northeastern Stations
- **Transit Ambassadors** will be available to assist with accessible vans as needed throughout construction



## Next Steps | *Advancing the Project*

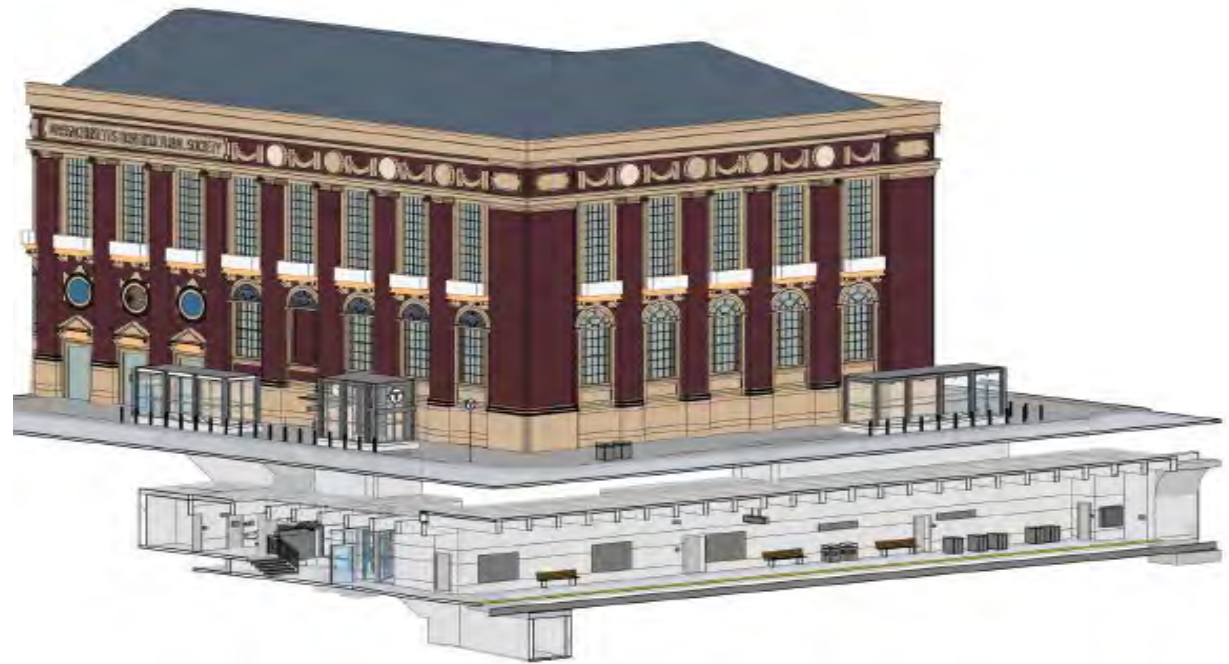
*100% Design*  
*Winter Early 2022*

*Procurement*  
*Spring 2022*

*Contract Award*  
*Summer 2022*

*Construction*  
*Summer 2022 - 2025*

- Delivery of Drawings & Specifications
- MBTA PDG & Department Review
- Risk Analysis
- Bidding & Award
- Public Meeting
- Utility Relocation
- Station Construction



# Symphony Station | Outreach

- MBTA Riders' Transportation Access Group (R-TAG) & Daniels Finegold et. Al v. MBTA Plaintiff Group
- Fenway Alliance
- Fenway Civic Association
- City of Boston
  - *Boston Transportation Department*
  - *Office of Neighborhood Services*
  - *Disability Commission*
  - *Public Improvements Commission (Boston Planning & Development Agency)*
  - *Street Lighting (Field Meetings)*
  - *Transit Team (Traffic & Public Works Dept.)*
  - *Parks Department*
  - *Green Line Programs Group*
- Symphony Towers
- Northeastern University
- Boston Symphony Orchestra
- First Church of Christ, Scientist



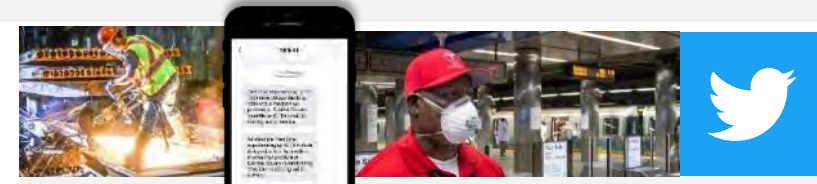
# Symphony Station | Keeping the Public Informed



## How to Stay Connected

- ✓ **Provided flyers and fact sheets** in preparation to inform the public
- ✓ Contact the project team at [GLT@mbta.com](mailto:GLT@mbta.com)
- ✓ Follow on social media
- ✓ Subscribe to GLT **email updates** at [mbta.com/glt](http://mbta.com/glt)
- ✓ **Subscribe to alerts** [mbta.com/alerts](http://mbta.com/alerts)
- ✓ Check **website** for up-to-date information [mbta.com/SymphonyStation](http://mbta.com/SymphonyStation)

Contact us at: [GLT@mbta.com](mailto:GLT@mbta.com)  
[www.mbta.com/GLT](http://www.mbta.com/GLT)



## Online & Social Media

Service Alerts  
Project Updates



## Public Comment | *Next Steps*

Please share only one question or comment at a time



- Use the “**Q&A**” button to submit a typed question or comment
- Press the “**Raise Hand**” button to share your question or comment verbally. Wait for the moderator to recognize and unmute you before speaking.
- If you have joined by phone only, you may “raise your hand” by pressing the star button and then nine (\*9)

*After you speak, we will lower your hand and you will be muted to allow the team to respond and provide opportunities for others to participate*

**Comments may also be sent to [GLT@mbta.com](mailto:GLT@mbta.com)**



**For More Information Visit**  
**[www.mbta.com/SymphonyStation](http://www.mbta.com/SymphonyStation)**

**or**

**Contact us at [GLT@mbta.com](mailto:GLT@mbta.com)**