



Downtown Crossing Accessibility Phase II

Court Parties Presentation: Three Accessible Elevators

June 2, 2021



Agenda

- History & Objectives
- Scope & Locations
 - Park Street
 - Macy's Elevator
 - Winter Street
- Schedule
- Outreach, Website & Contact Information



History & Objectives

History:

- DTX Station built in 1908, 1915
- Phase I (2015) – Two new elevators
- Phase II (now) – Three new elevators that will provide fully accessible transfers
 - One Park Street elevator will connect to the Winter Street concourse and the Red Line's Center Platform
 - Two DTX elevators will connect to the Red Line and Orange Line

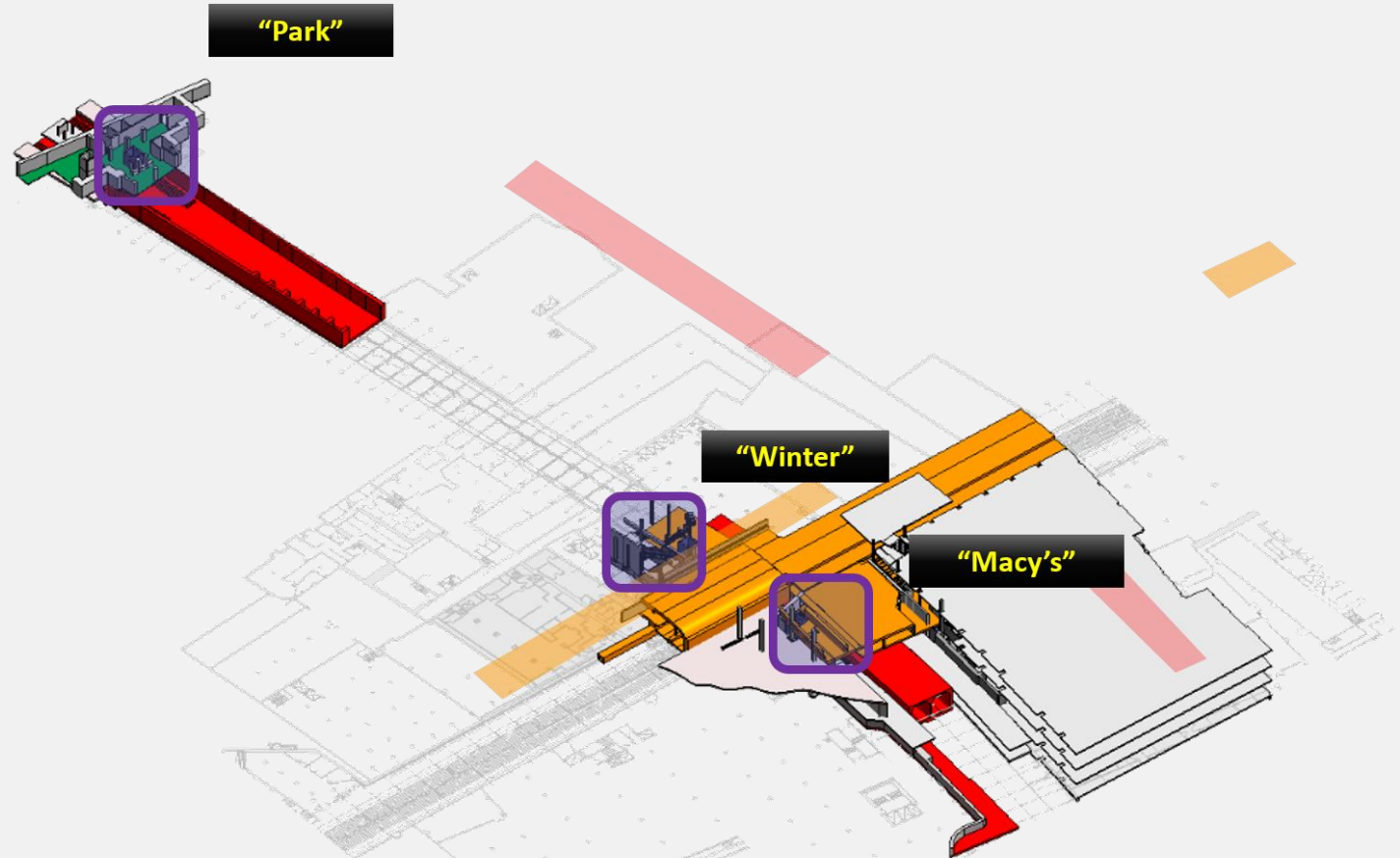
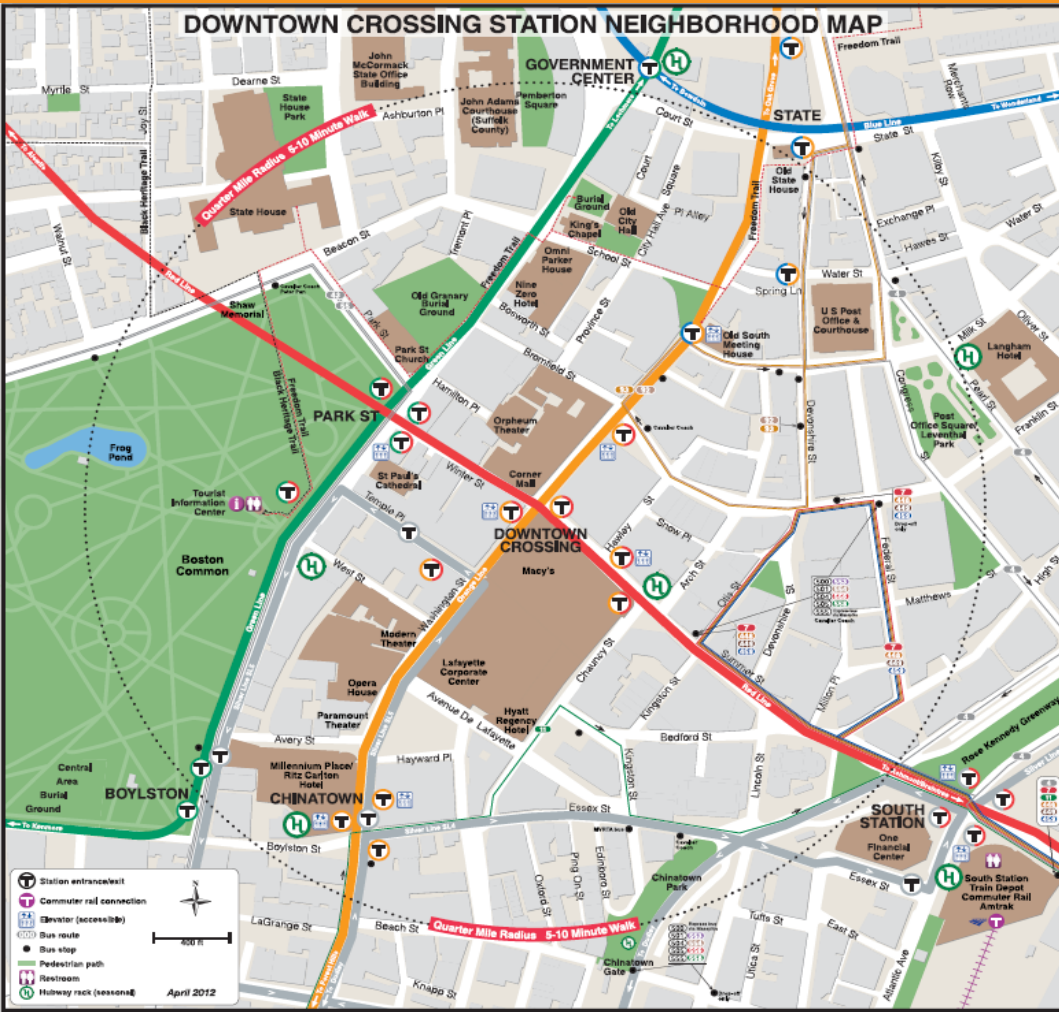
Objectives:

- Implement Americans with Disabilities Act (ADA) upgrades to fulfill code compliance requirements
- Increase passenger access and overall system safety
- Reduce life cycle maintenance costs



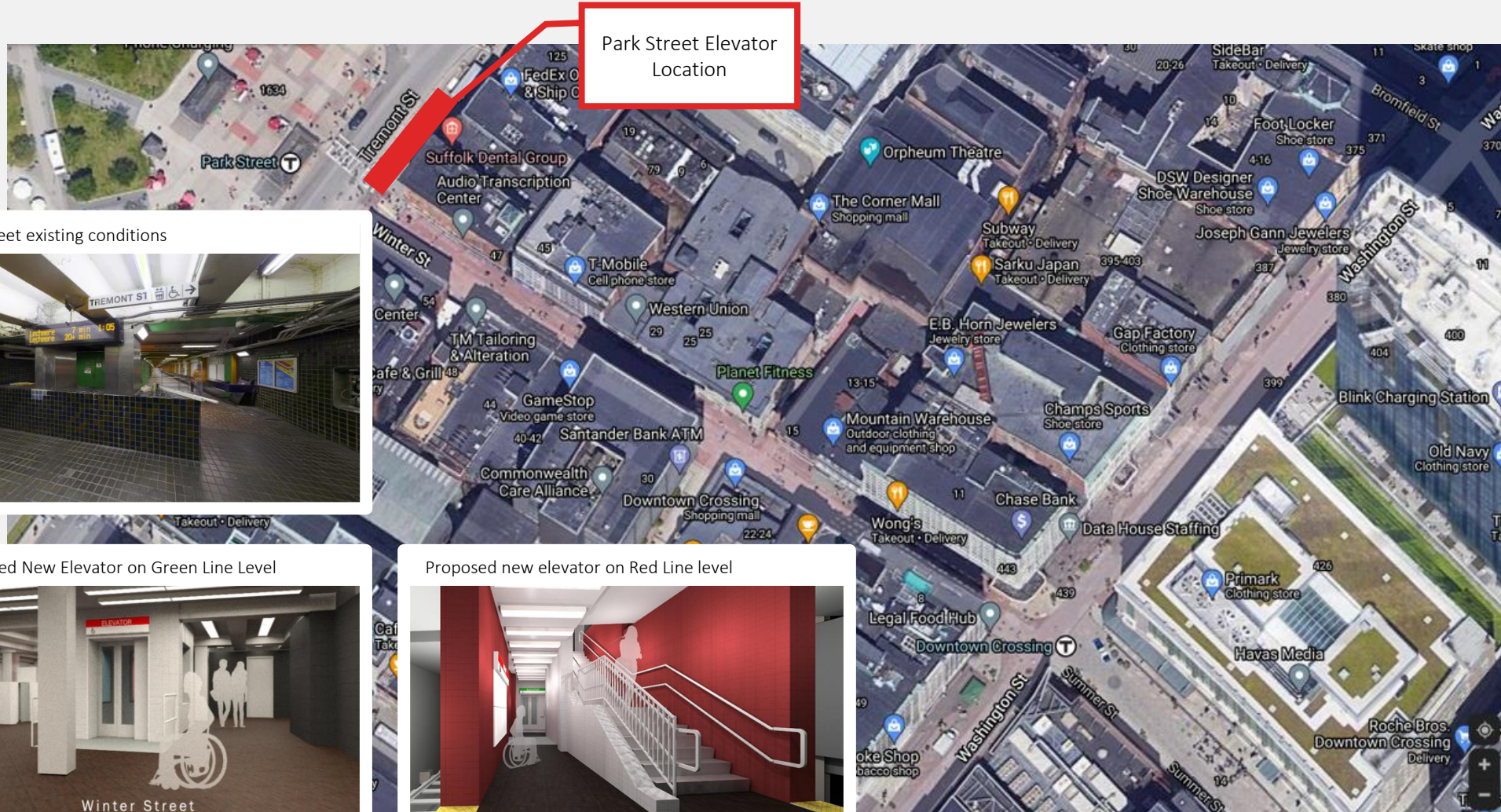
Scope & Locations

- Park: Replace aged and undersized existing 808 and improve transfer
- Winter: Provide transfer and exit
- Macy's: Provide transfer





Park Street Elevator



Park Street existing conditions



Proposed New Elevator on Green Line Level

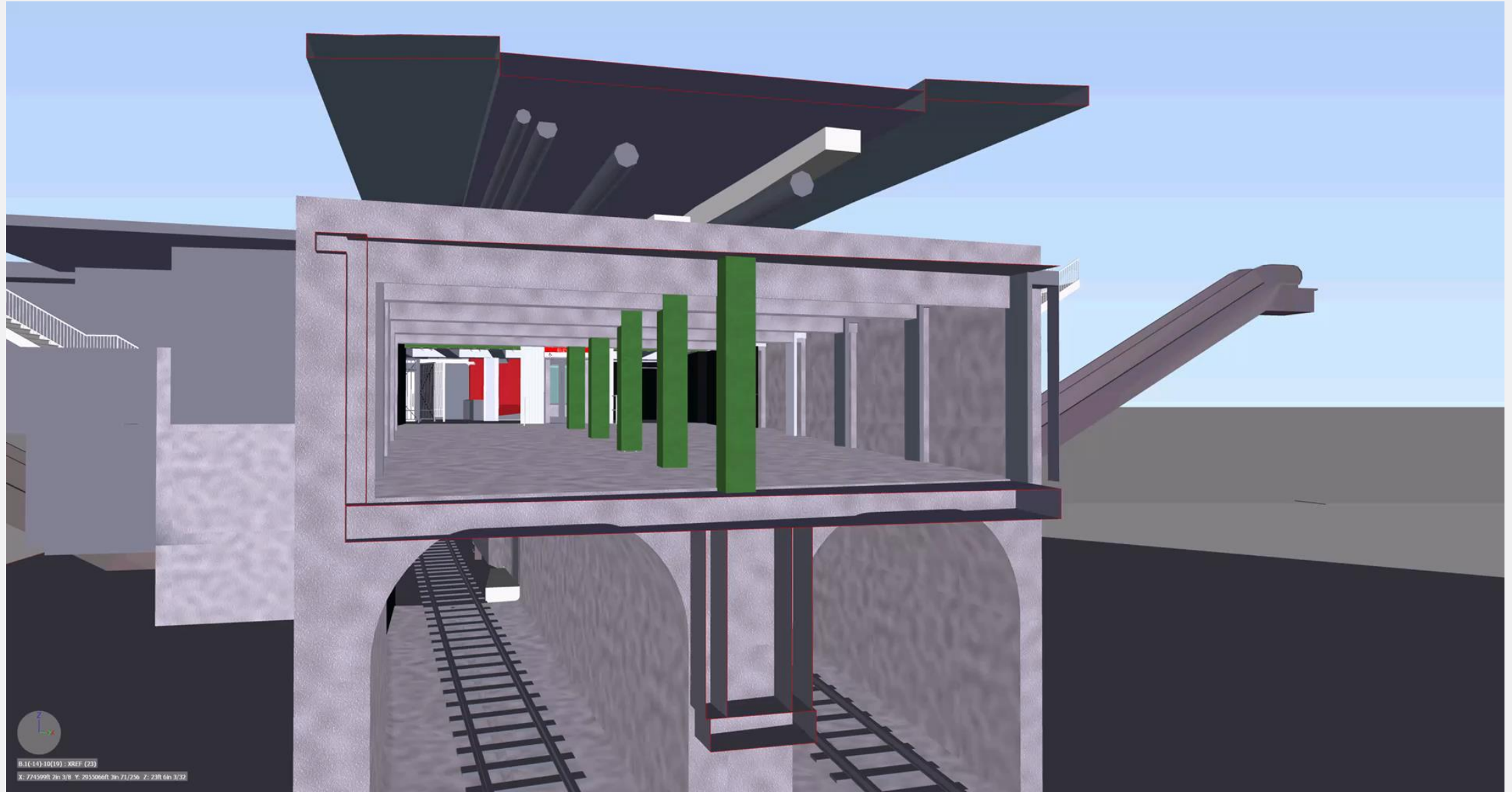


Proposed new elevator on Red Line level



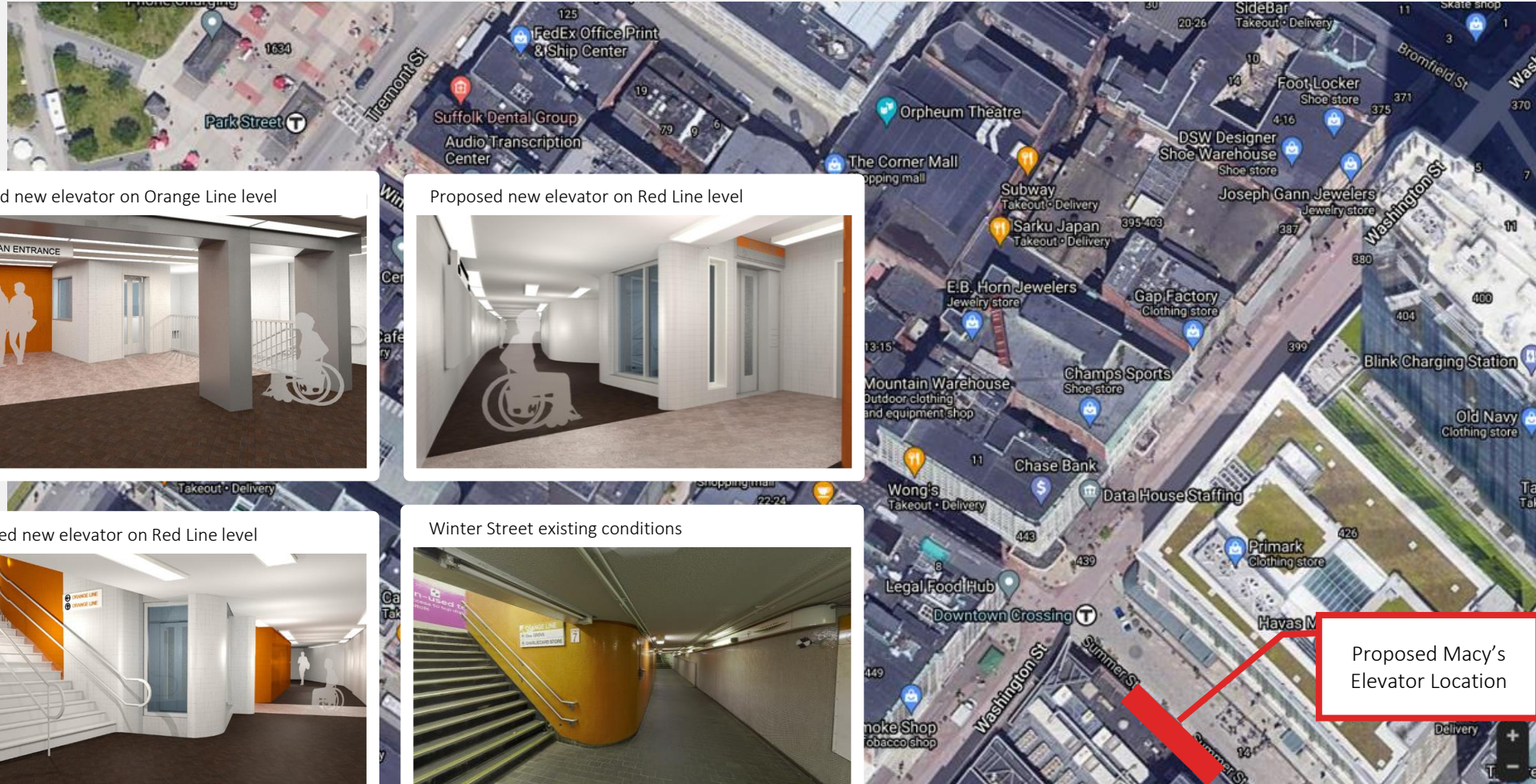
Note: This drawing is not to scale and is only intended for illustrative purposes.

Park Street Elevator





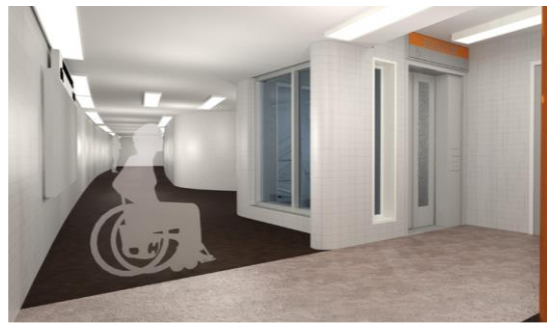
Macy's Elevator



Proposed new elevator on Orange Line level



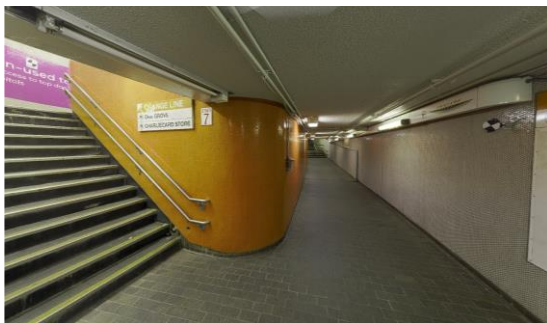
Proposed new elevator on Red Line level



Proposed new elevator on Red Line level



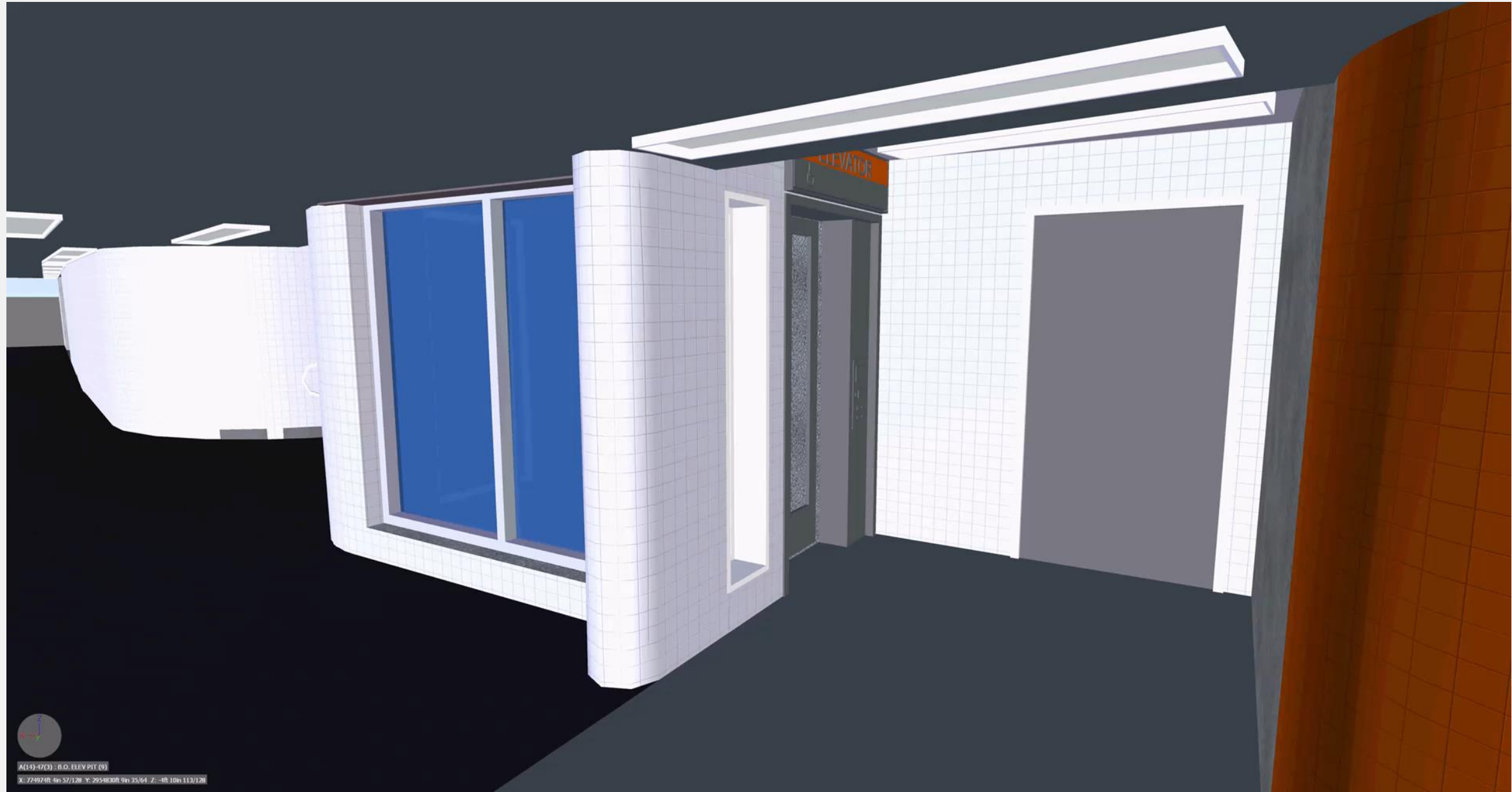
Winter Street existing conditions



Proposed Macy's Elevator Location

Note: This drawing is not to scale and is only intended for illustrative purposes.

Macy's Elevator





Winter Street Elevator



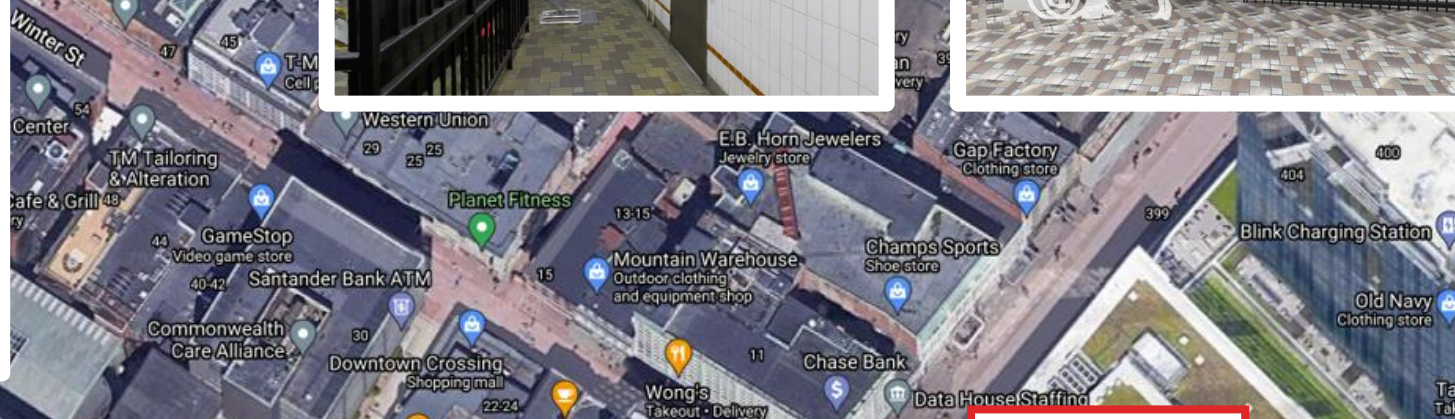
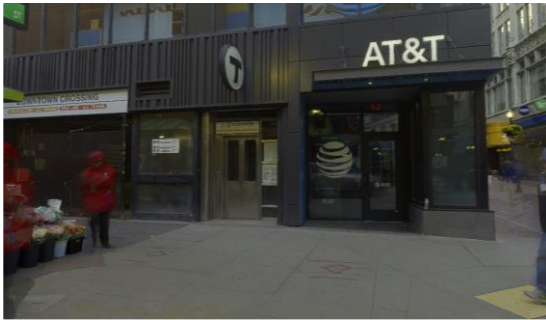
Winter Street existing conditions



Proposed new elevator on Orange Line level



Winter Street existing conditions



Winter Street existing conditions

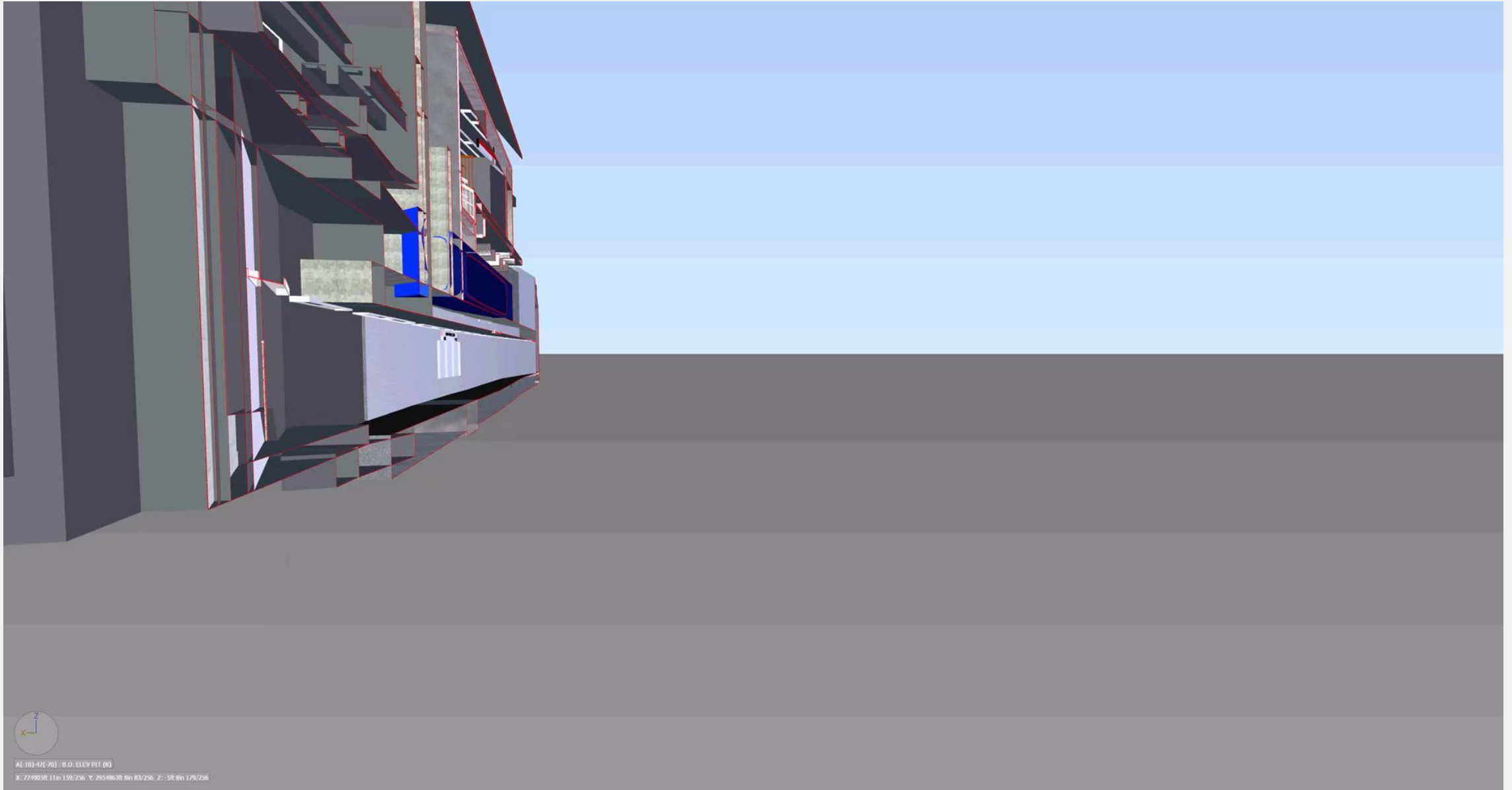


Proposed new elevator on Red Line level



Note: This drawing is not to scale and is only intended for illustrative purposes.

Winter Street Elevator





Outreach, Website & Contact Information

Outreach Schedule for 2021

- Court Parties briefing: June 2, 2021
- R-TAG and named plaintiffs briefing: Summer 2021
- Downtown Crossing Business Improvement District: Summer 2021
- Boston Disability Commission: Summer 2021
- Public Meeting: Early Fall 2021

Website & Contact Details

- **Website:** www.mbta.com/dtx-accessibility
- **E-mail:** DTX@MBTA.com

THANK YOU!



Park Street Elevator

Proposed

Elevator

- Type: In-ground Hydraulic
- Configuration: Pass-Through
- Hoistway: 7'-2" X 10'-0"
- Cab Size: 7'-10 1/2" X 5'-0"
- MBTA ADA/Stretcher Preferred: Yes

AFC Booth

- To be Relocated

Elevator Machine Room

- Size: 110 Sq. Ft
- Reuse & Expand Existing EMR
- Location: Concourse Level

Proposed Park Street Elevator

Existing 808 Elevator To Be Demolished

Existing Pump Well

Existing Condition

Elevator

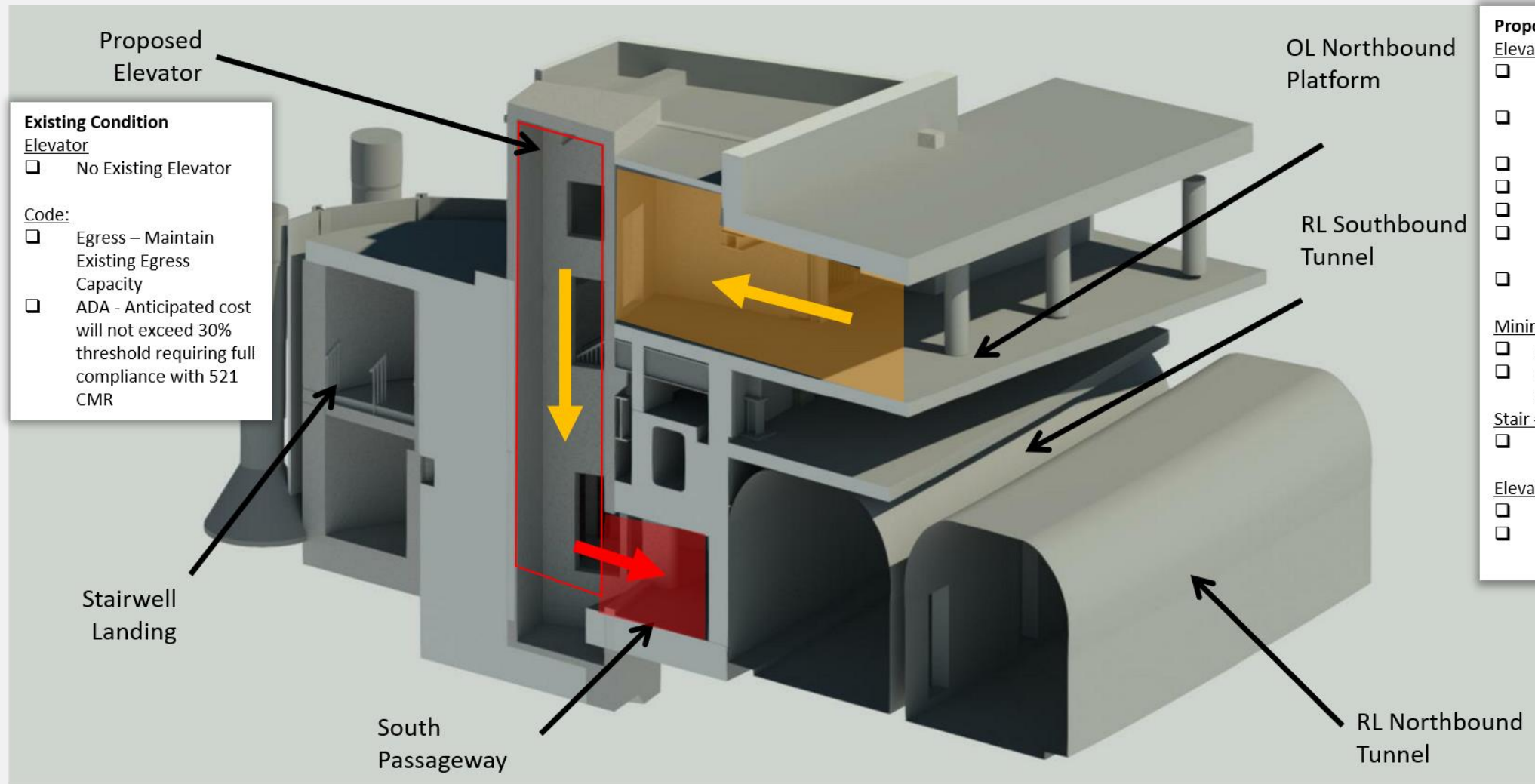
- Elevator #808 Surpassed Usable Lifespan
- Type: In-ground Hydraulic
- Configuration: Single Entry
- Hoistway: 8'-0" X 5'-9"
- Cab Size: 4' -1" X 4'-6"
- Non-Stretcher Compliant

Code:

- Egress – Maintain Existing Egress Capacity
- ADA - Anticipated cost will not exceed 30% threshold requiring full compliance with 521 CMR



Macy's Elevator



Existing Condition Elevator

- No Existing Elevator

Code:

- Egress – Maintain Existing Egress Capacity
- ADA - Anticipated cost will not exceed 30% threshold requiring full compliance with 521 CMR

- Proposed Elevator**
- Type: In-ground Hydraulic
 - Configuration: 90-Degree Door
 - Hoistway: 7'-7" X 7'-7"
 - Cab Size: 5'-0" X 5'-0"
 - MAAB Compliance: Yes
 - Stretcher Accommodation: No
 - MBTA Preferred: No
- Minimum MBTA preferred:**
- 90° ADA: 76.25" x 76.25"
 - 90° ADA/S: 70.25" x 90.25"
- Stair #2**
- Modifications Required
- Elevator Machine Room**
- Size: Approx. 100 Sq. Ft
 - Location: Concourse Level



Winter Street Elevator

Existing Condition

Elevator

- 2-Stop Elevator (SL-OL)
- Type: In-ground Hydraulic
- Hoistway: 6'-2" x 8'-0"
- Configuration: Pass-Through
- Cab: 4'-6" x 5'-2 1/2"
- Non-Stretcher Compliant

Code:

- Egress – Maintain Existing Egress Capacity
- ADA - Anticipated cost will not exceed 30% threshold requiring full compliance with 521 CMR

Proposed

Elevator

- Type: In-ground Hydraulic
- Configuration: Pass-Through (SL-OL). In-Out (OLRL)
- Hoistway: 7'-2" X 10'-0"
- Cab Size: 7'-10 1/2" X 5'-0"
- ADA Compliance: Yes
- Stretcher Accommodation: Yes

Stair #8

- Modifications Required

Elevator Machine Room

- Size: Approx. 150 Sq. Ft
- Location: Concourse Level

