



Symphony Station Accessibility Improvements

Virtual Public Meeting

Wednesday, March 3, 2021

Virtual Meeting | Overview



Raise Hand



Q&A

- Use the “**Q&A**” button to submit a typed question or comment
- Press the “**Raise Hand**” button to share your question or comment verbally. Wait for the moderator to recognize and unmute you before speaking.
- If you have joined by phone only, you may “raise your hand” by pressing the star button and then nine (*9)

After you speak, we will lower your hand and you will be muted to allow the team to respond and provide opportunities for others to participate

Comments may also be sent to GLT@mbta.com

SAFETY MOMENT

Wear a face covering and maintain social distancing!

Ride Safer



Agenda | *Today's Meeting*

- 1. Green Line Transformation** | *Levels*
- 2. Introductions** | *Project Team*
- 3. Overview** | *Project Updates*
- 4. Next Steps** | *Advancing the Project*
- 5. Q&A**



Levels of Transformation

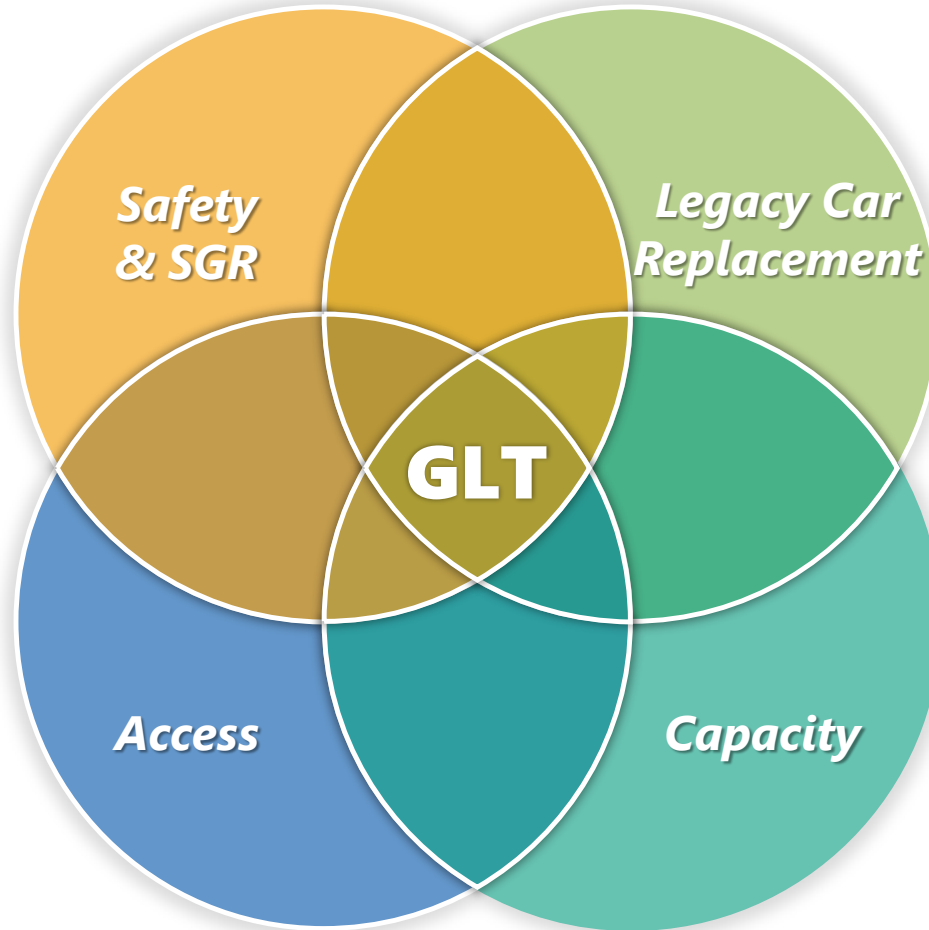
Achieving Multiple Goals

Level 0	Safety & State of Good Repair (SGR)
Transformative Outcomes	
<ul style="list-style-type: none"> • Minimize risk of service disruptions • Reduce speed restrictions • Bring assets to state of good repair 	

Level 2	Legacy Car Replacement
Transformative Outcomes	
<p>Operate and maintain single Type 10s</p> <ul style="list-style-type: none"> • More efficient O&M • 100% of Green Line trains accessible • More equitable across the Green Line 	

Level 1	Accessible Stations
Transformative Outcomes	
<ul style="list-style-type: none"> • New or upgraded platforms • Compliant height, width & slope • Barrier-free pathways & wayfinding • Detectable warning panels 	

Level 3	Increased Capacity
Transformative Outcomes	
<p>Additional vehicles and infrastructure for two-car Type 10 operation</p> <ul style="list-style-type: none"> • Increase core capacity of subway • Reduce headways and journey time • Expand yards and facilities 	



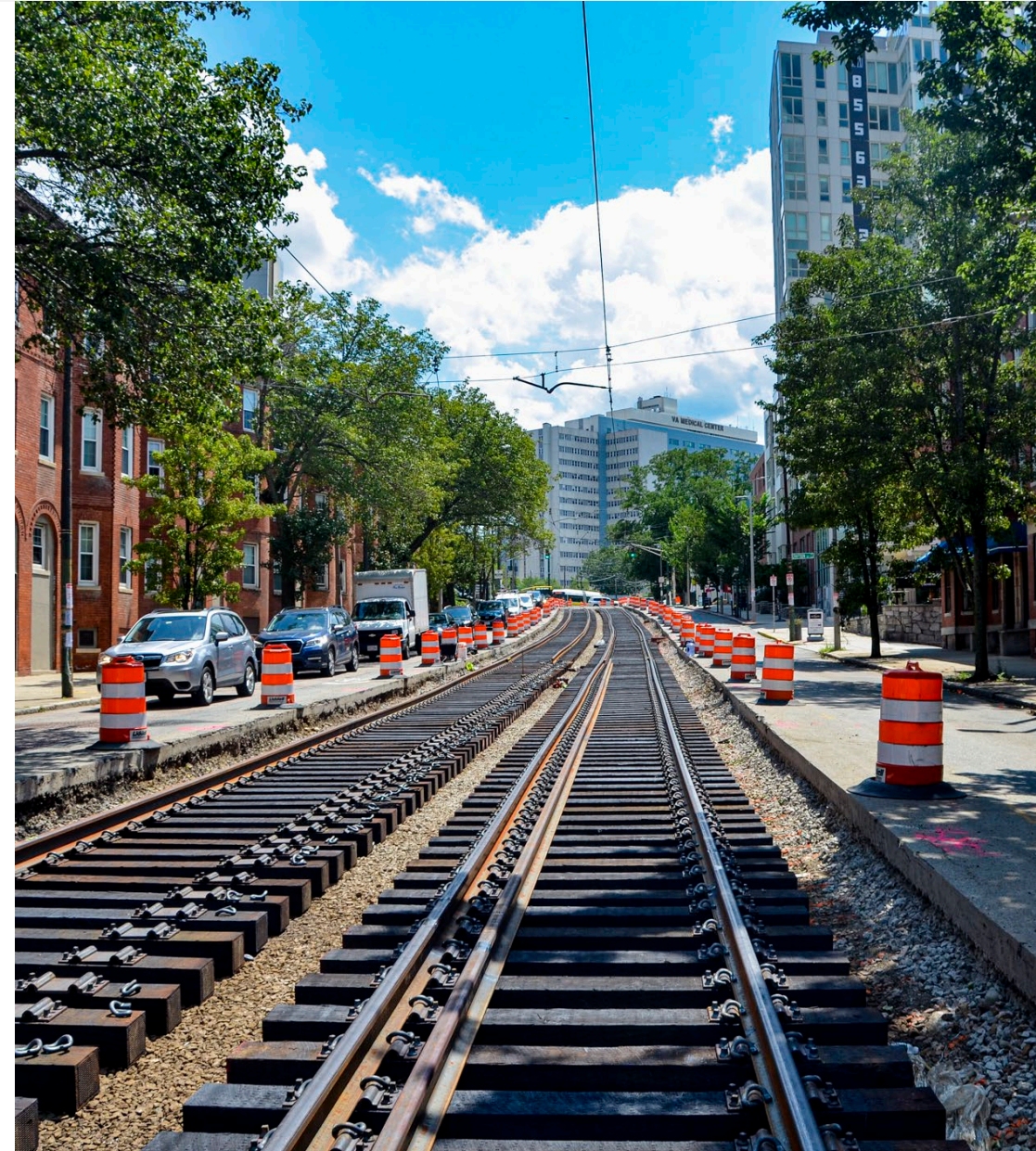
Green Line Transformation | Safety & State of Good Repair (SGR)



Level 0

Executed significant **Safety & State of Good Repair** improvements during construction in **2019 & 2020:**

- ✓ Replaced approximately **57,000 feet of track** Systemwide
- ✓ Upgraded **45 Intersections/Crossings** on the B, C and E Branches
- ✓ Replaced **10 units of special trackwork** on the D and C Branches
- ✓ Installation of **flood protection doors** and gates at Fenway portal on the D Branch





Level 1 Accessibility improvements to stations over the next several years

- ✓ New or **upgraded platforms**
- ✓ Compliant height, width & slope
- ✓ **Barrier-free pathways**
- ✓ Improved wayfinding & signage
- ✓ Detectable warning panels
- ✓ Improved communications systems
- ✓ Station amenities (benches, canopies, lighting)



- **Thornton Tomasetti** | Project Prime Consultant/Structural Engineering
- **DHK Architects (MBE)** | Project Architects
- **Dino DiFronzo, Sr.** | Municipal Liaison/Stakeholder & Community Relations
- **Vertical Transportation Excellence** | Elevator Consulting/Engineering
- **City Point Partners (DBE)** | Public Outreach
- **Code Red Consultants** | Code Consultant
- **Nobis Engineering (DBE)** | Environmental Soils/Haz Mat Consultant
- **Garcia Galuska DeSousa** | Mech'l, Elec'l, Plumb'g/FP Eng.
- **Garg Consulting Services (DBE)** | Signals
- **Keville Enterprises (DBE)** | Project Controls Consultant
- **Huie Construction Services** | Constructability Consultant
- **Epsilon Associates** | Environmental Permitting & Historic Review
- **C&C Consulting Engineers (DBE)** | Civil Engineer



Overview | Project Update

Project Scope

- Accessibility and Code Improvements
- Install four new elevators from street level to platform
- Construct new emergency exit stairs
- Replace or improve existing stairs
- Construct new accessible restrooms
- Raise platforms to 8" to align with existing train-car floors
- Areas of Refuge
- Upgrades to Fire Alarm/Life Safety Systems
- Other station improvements
- Resiliency Measures



Symphony Station | Northbound Entrance

Project Status:

- ✓ *0-15% Concept – Developed with System Wide Accessibility*
- ✓ *20% Public Meetings – **Completed August 2017***
- ✓ *30% Schematic Design – **Completed February 2020***
- ✓ *75% Design – **Completed 12/23/2020***
- ❑ *100% Design – **Est. Feb 2021 – Summer 2021***
- ❑ *Estimated Construction Start – **Fall/Winter 2021***

Symphony Station | Outreach

- MBTA Riders' Transportation Access Group
- Fenway Alliance
- Fenway Civic Association
- City of Boston
 - Boston Transportation Department
 - Office of Neighborhood Services
 - Disability Commission
 - Public Improvements Commission (Boston Planning & Development Agency)
 - Street Lighting (Field Meetings)
 - Transit Team (Traffic & Public Works Dept.)
 - Parks Department
 - Green Line Programs Group
- Symphony Towers
- Northeastern University
- Boston Symphony Orchestra
- First Church of Christ, Scientist





Symphony Station

EXISTING CONDITIONS



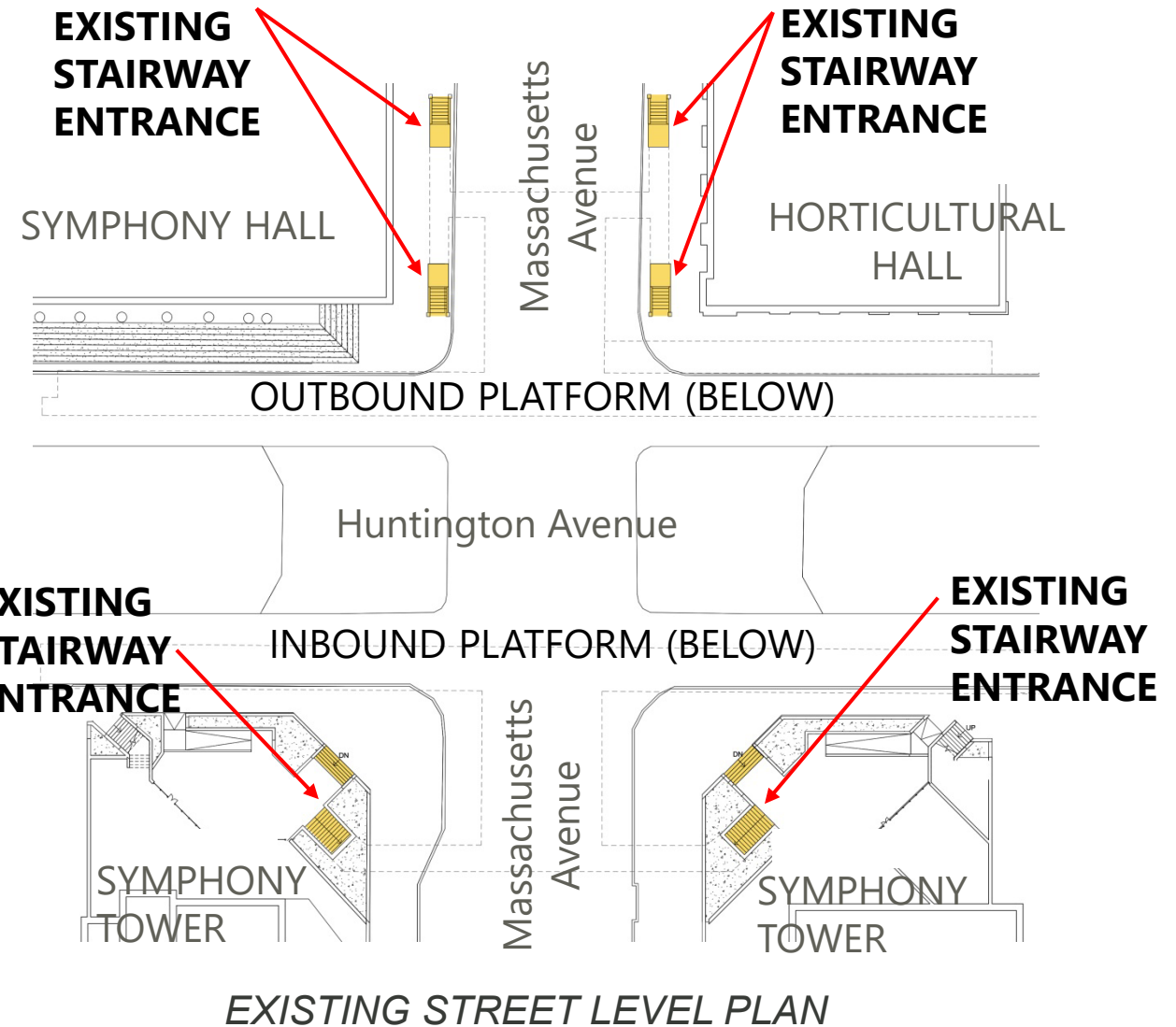
Symphony Station | Existing Conditions

Street Level

- Four stairway entrances at street level for westbound platform
- Two stairway entrances for northbound platform
- Inaccessible entrance/exit to platforms below



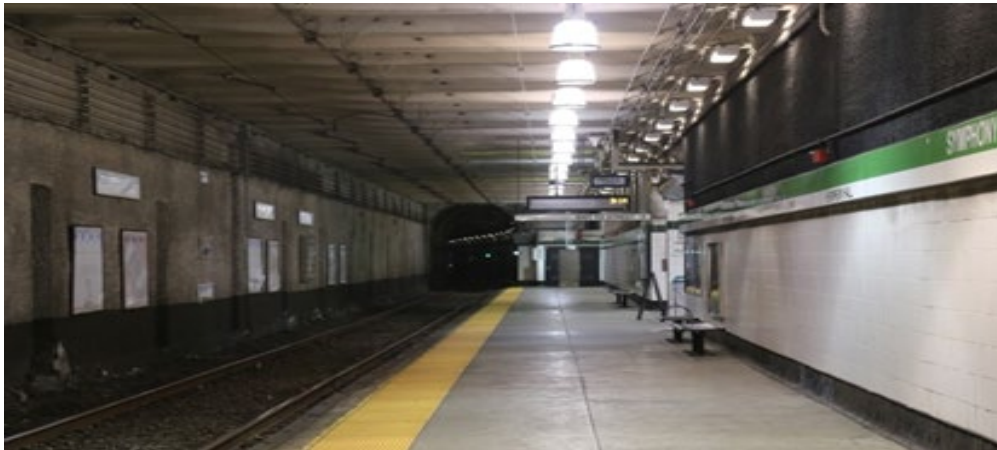
NORTHBOUND ENTRANCE



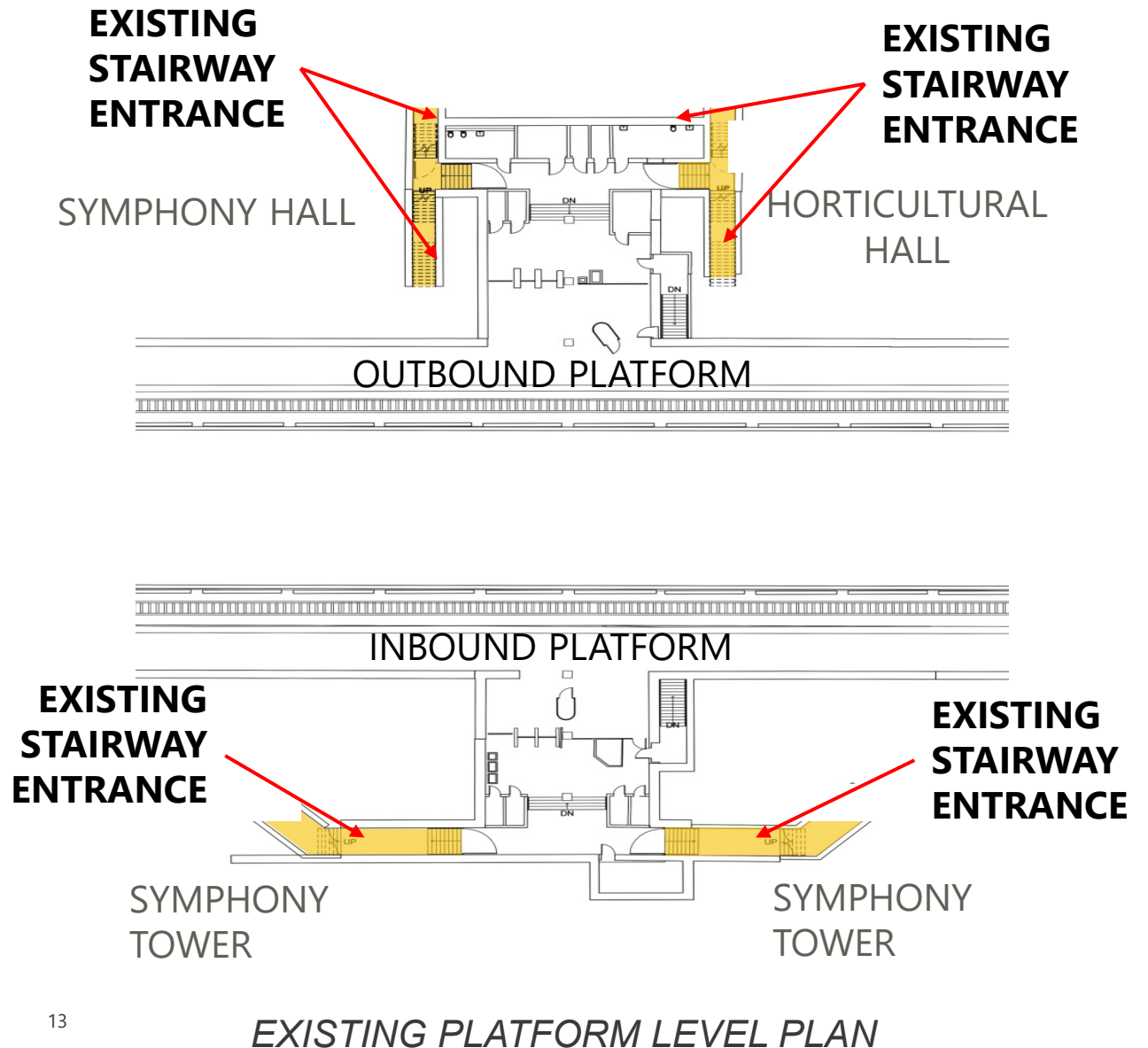
Symphony Station | Existing Conditions

Platform Level

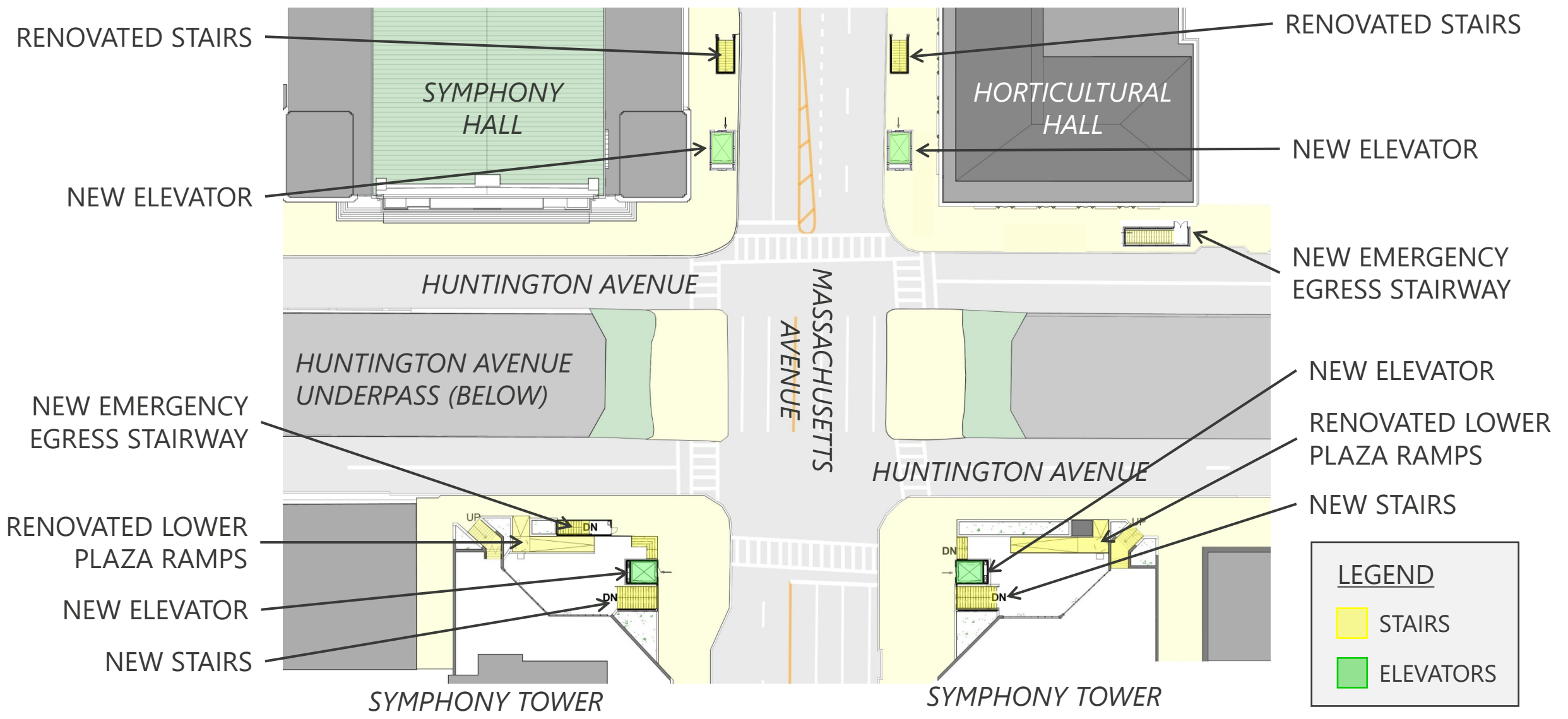
- Stair access only from street
- Platforms too low for new trains
- Inadequate egress
- Non-functioning restrooms at outbound
- No restrooms at inbound platform
- Inadequate emergency lighting



STATION PLATFORM



Architectural Design | Surface Improvements





Symphony Station

**NEW ELEVATOR &
STAIR AT
SYMPHONY HALL**



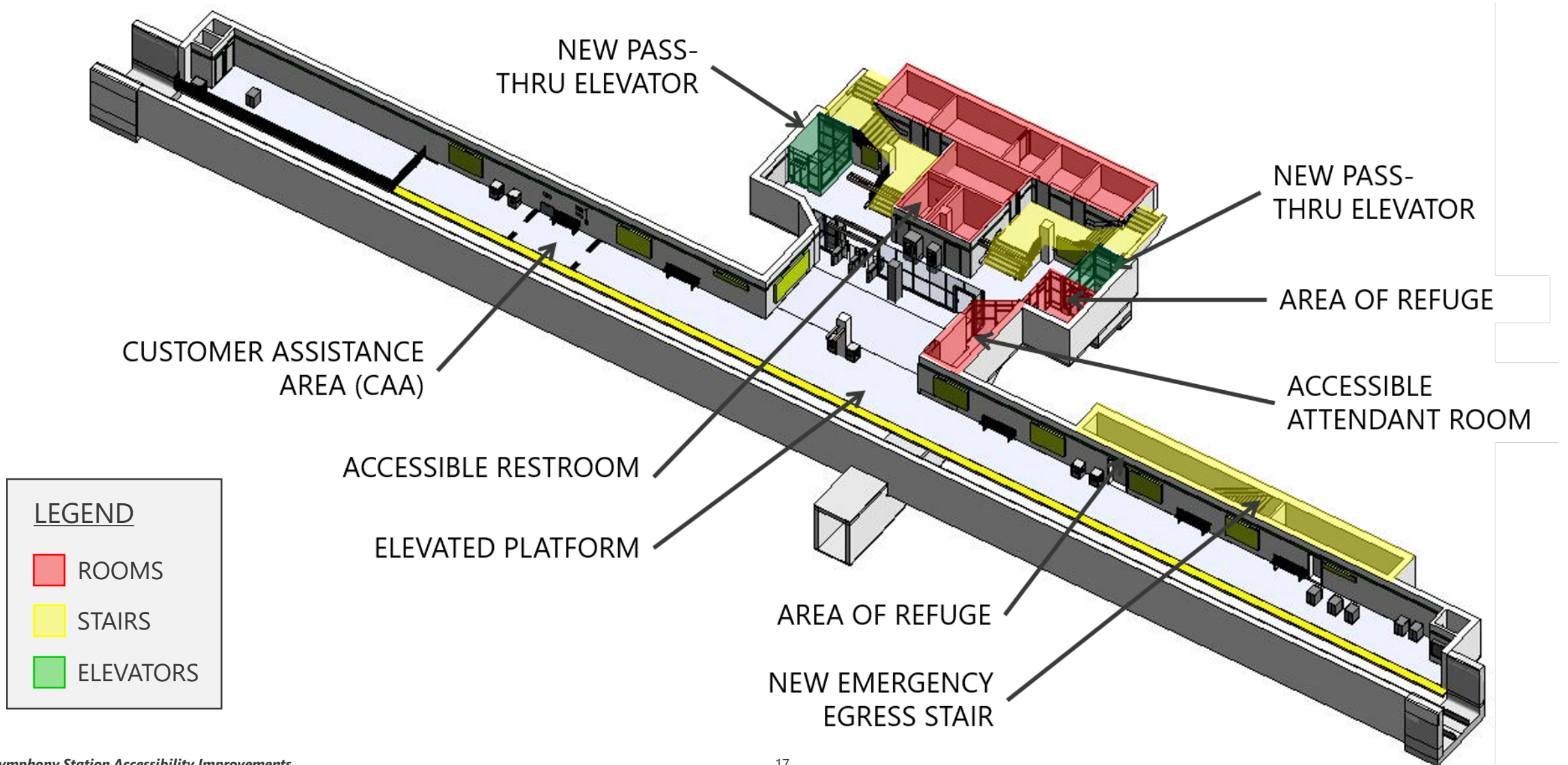
NEW STAIR / ELEVATOR / EGRESS STAIR | *Horticultural Hall*



Symphony Station



Architectural Station Improvements | Outbound Platform Level 3D

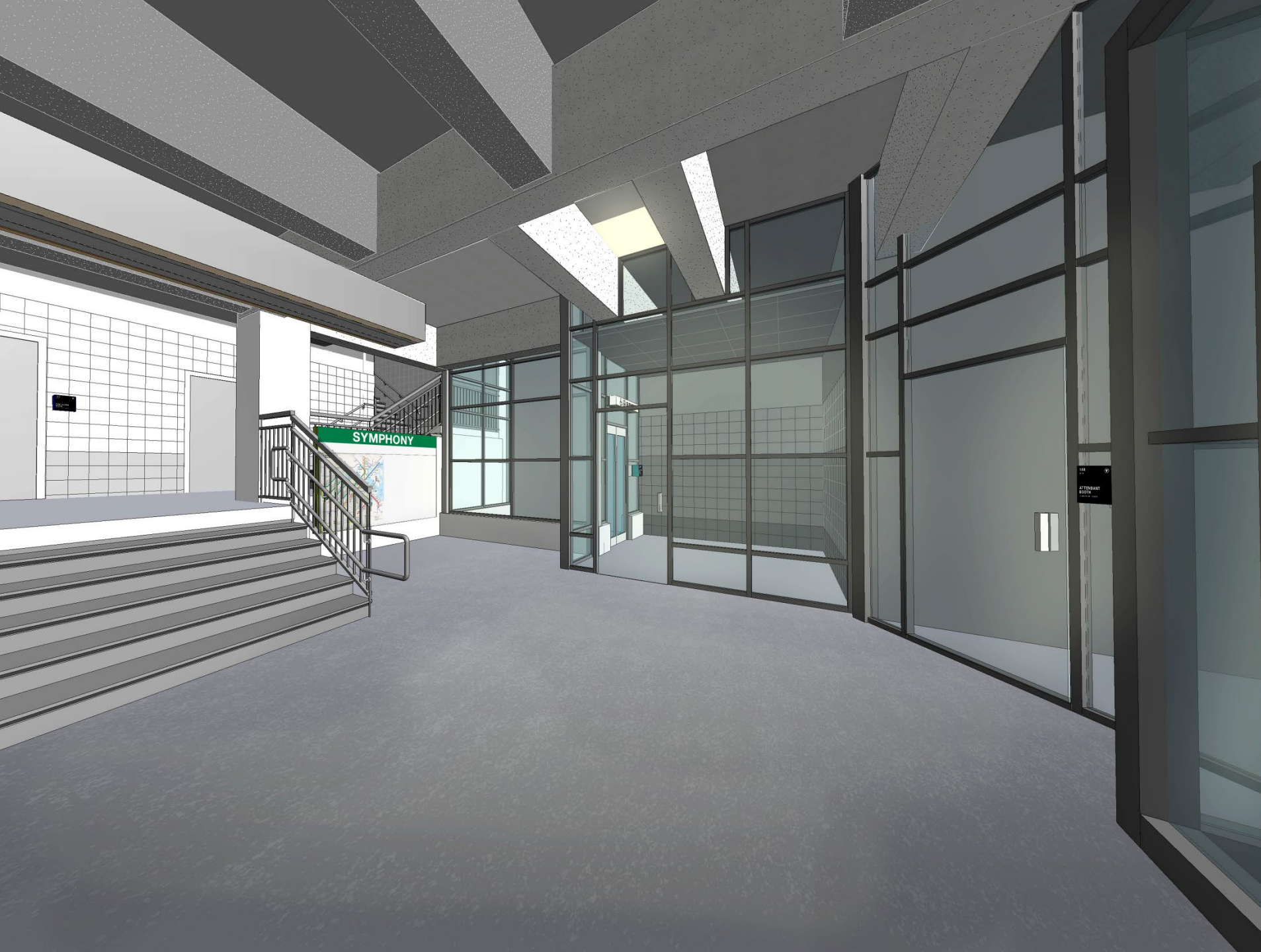




Symphony Station

**OUTBOUND
STATION IMAGE
FROM
PLATFORM**





Symphony Station

OUTBOUND STATION IMAGE LOBBY





Symphony Station

INBOUND ELEVATOR & STAIR SYMPHONY TOWER EAST



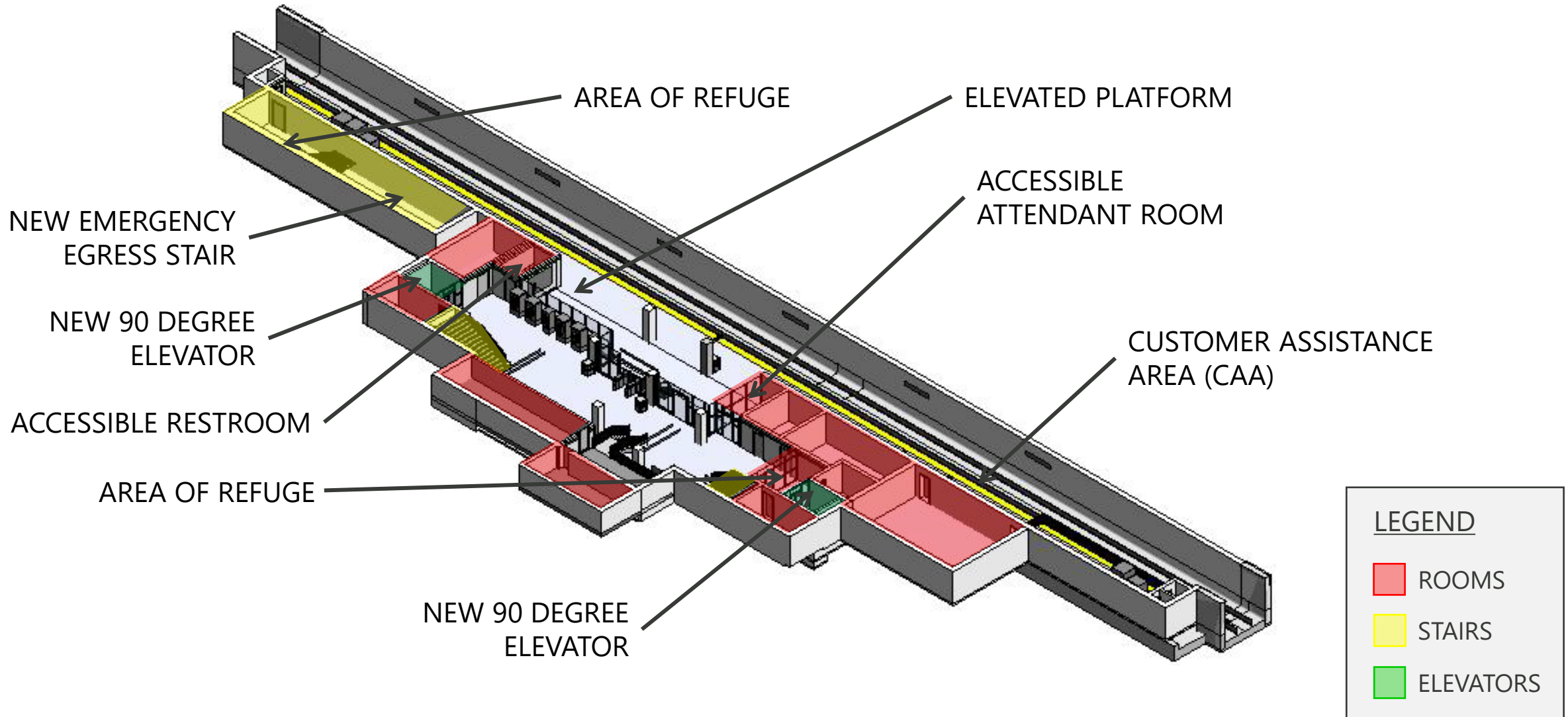


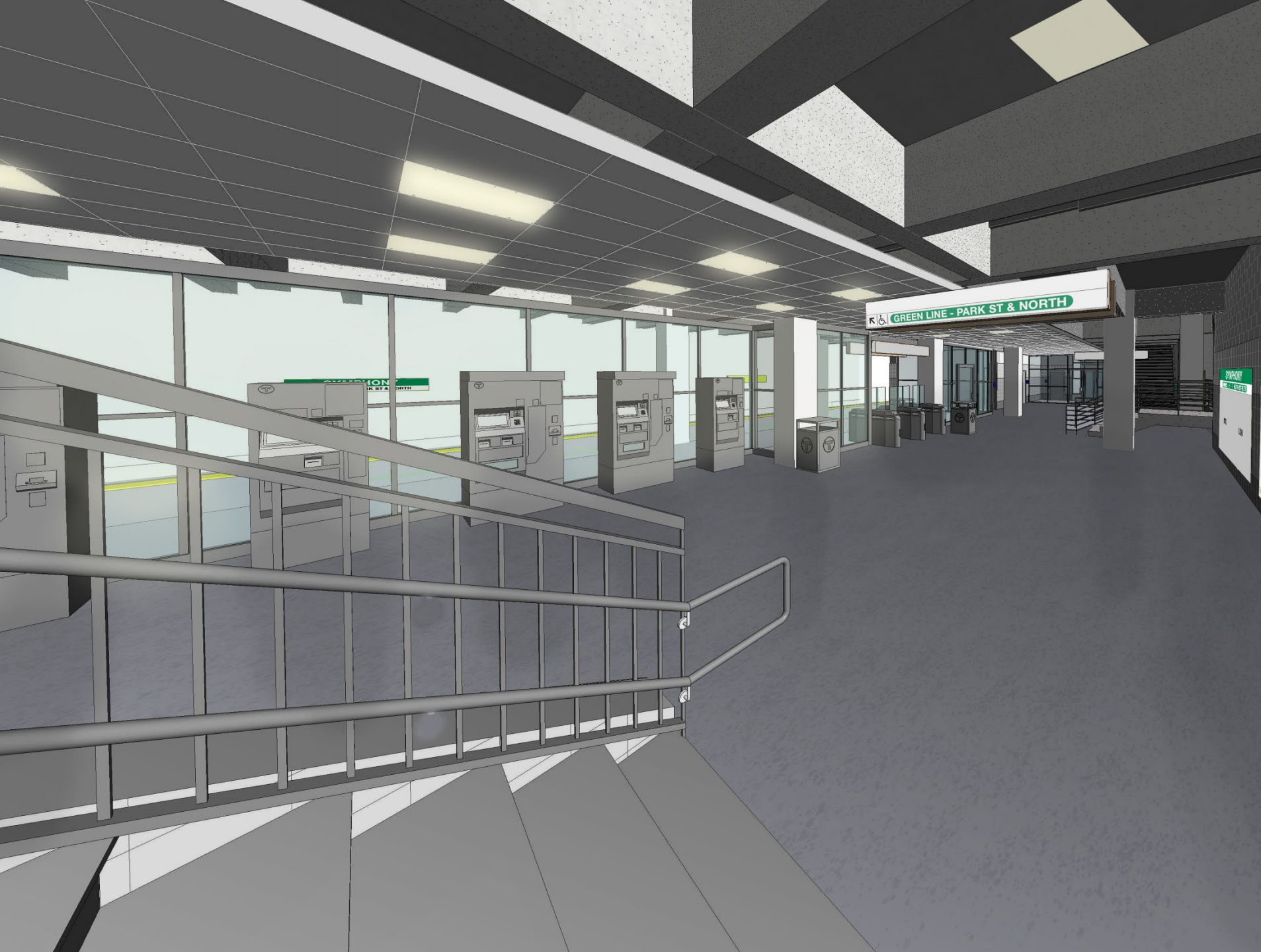
Symphony Station

INBOUND ELEVATOR & STAIR SYMPHONY TOWER WEST



Architectural Station Improvements | *Inbound Platform Level 3D*





Symphony Station

INBOUND WEST STATION LOBBY





Symphony Station

INBOUND EAST STATION LOBBY





Symphony Station

**INBOUND
STATION LOBBY**



Symphony Station | *Station Upgrades*

Key Points

- Four (4) new elevators (two (2) per station side)
- Two (2) new accessible toilet rooms (one (1) per station side)
- Four (4) new Areas of Refuge (two (2) per station side)
 - Smoke resistant and equipped with Stryker chairs, emergency call boxes etc.
- Raised station platform to accommodate level boarding for current Green Line Trains
 - Station designed to accommodate future raising of platform for new green line train cars for level boarding
- Two (2) new accessible attendant rooms for MBTA employees (one (1) per station side)
- Customer Assistance Areas (CAA) on each platform equipped with tactile bars, signage, wheelchair space, emergency call box etc.
- All hardware, signage, accessories mounted at accessible heights
- New fixtures and updated finishes

Next Steps | *Project Schedule*

Milestone	Anticipated Schedule
Complete Design	Summer 2021
Construction Award	Late Summer 2021
Construction Start	Fall/Winter 2021
Construction Complete	Summer 2023

13 Month Station Closure

- Trains will run through station
- Station closed to passengers
- Weekend Shutdowns

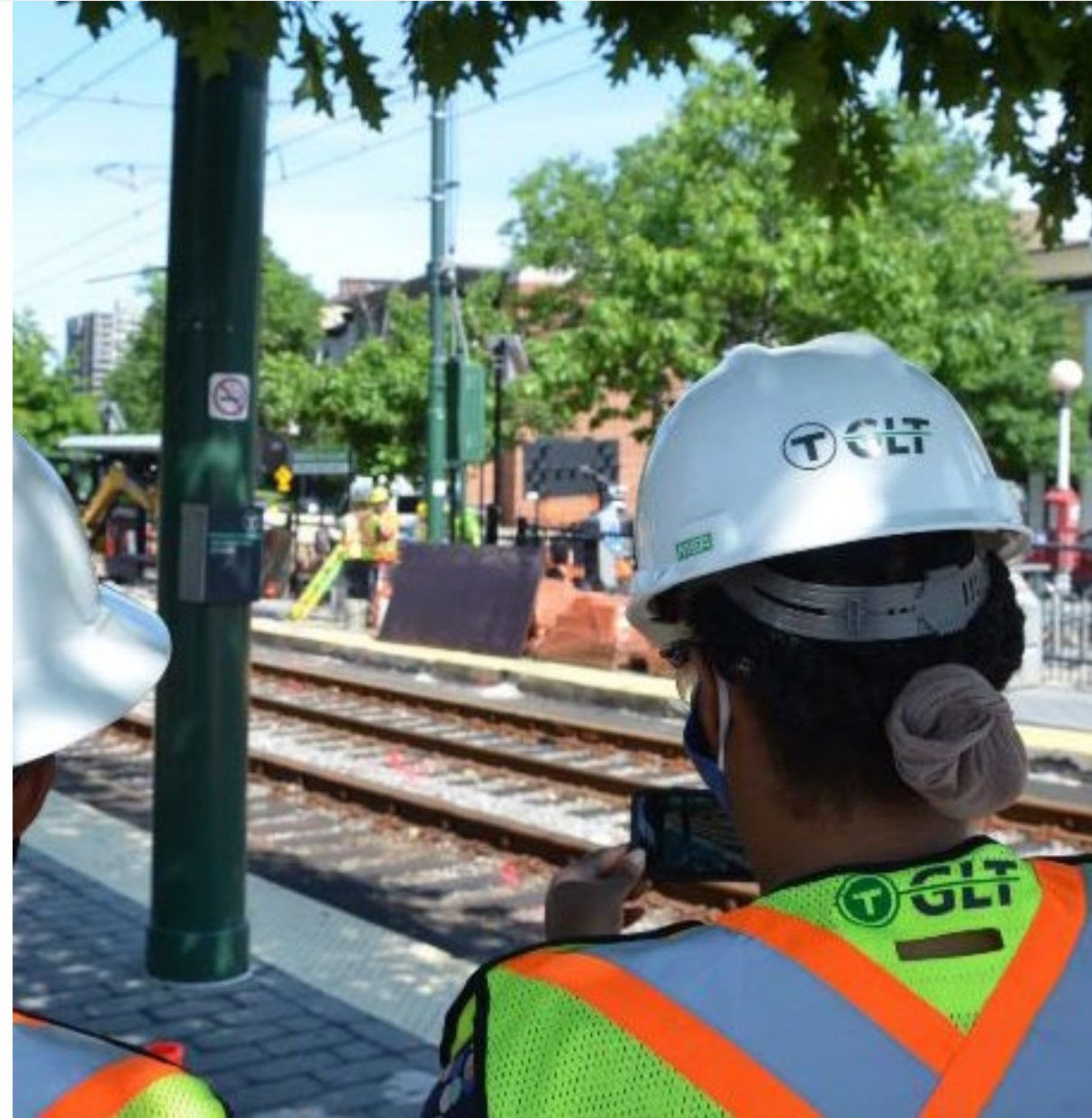
Plans for alternate service to Symphony Station during the closure are under development

The station closure provides a safer means of construction and reduces the duration by an estimated 20 months

Next Steps | *Advancing the Project*

75%-100% Design Phase

- ✓ Constructability Review (completed in February)
- Pre-Permitting Meeting / State Inspectors
- Municipal & Public Outreach
- MBTA Department Coordination
- Utility Coordination
- Risk Analysis
- Final Design Plans, Specifications, Engineer's Estimate and Contract Time Determination (CTD)

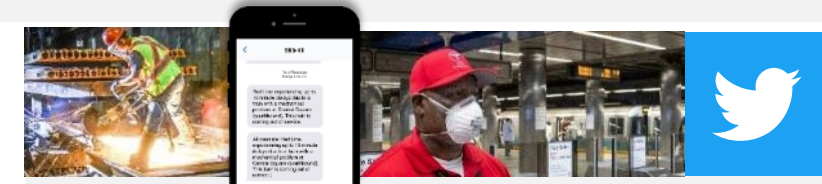


Symphony Station | Public Outreach

Public Meeting & How to Stay Connected

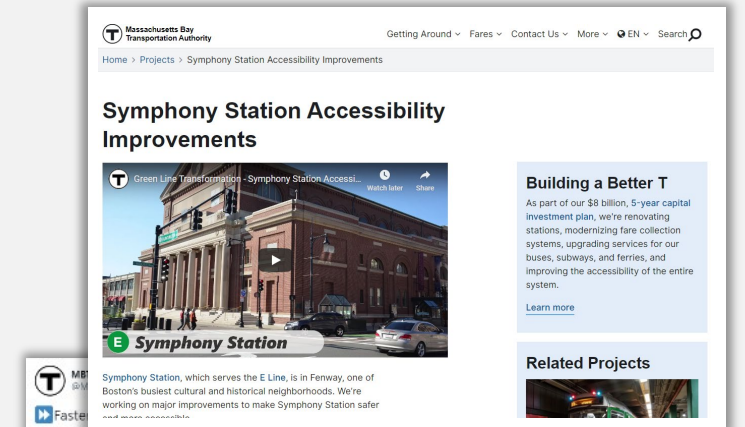
- ✓ Virtual Public Meeting recording will be posted at mbta.com/SymphonyStation
- ✓ Contact the project team at GLT@mbta.com
- ✓ Follow on social media
- ✓ Subscribe to GLT **email updates** at mbta.com/glt
- ✓ **Subscribe to alerts** mbta.com/alerts
- ✓ Check **website** for up-to-date information mbta.com/SymphonyStation

Contact us at: GLT@mbta.com
www.mbta.com/GLT



Online & Social Media

Service Alerts
Project Updates



Symphony Station, which serves the E Line, is in Fenway, one of Boston's busiest cultural and historical neighborhoods. We're working on major improvements to make Symphony Station safer and more accessible.

Green Line, we're merging 4 stops into a new accessible stop for the B Branch Station Consolidation project.

Join us Jan 28 for a virtual public meeting on our work: ow.ly/4Zqw50DeFR6

#BuildingABetterT #TAccess



12:30 PM - Jan 21, 2021 - Hootsuite Inc.



Public Comment | *Next Steps*

Please share only one question or comment at a time



Raise Hand



Q&A

- Use the “**Q&A**” button to submit a typed question or comment
- Press the “**Raise Hand**” button to share your question or comment verbally. Wait for the moderator to recognize and unmute you before speaking.
- If you have joined by phone only, you may “raise your hand” by pressing the star button and then nine (*9)

After you speak, we will lower your hand and you will be muted to allow the team to respond and provide opportunities for others to participate

Comments may also be sent to GLT@mbta.com



Symphony Station

Questions?

More Information at www.mbta.com/SymphonyStation

Contact us at GLT@mbta.com





Thank You!