



# Massachusetts Bay Transportation Authority

MBTA Contract No. A35PS01:  
Design and Engineering Services for Forest Hills Station  
Improvements

---

Fiscal and Management Control Board

August 24, 2020

John Schwarz

# Project Benefits – Forest Hills Station

---

- **Implements upgrades to fulfill code compliance requirements**
- **Improves accessibility, safety and overall customer experience**
- **Replaces existing elevator cabs and equipment**
- **Provides new elevator and stair access directly between the Upper Busway and Lower Busway**
- **Upgrades station amenities for customers and MBTA staff**
- **Addresses State of Good Repair of building envelope and building systems (mechanical, plumbing, electrical and life safety systems)**
- **Reduces life cycle maintenance costs**
- **Complies with BCIL agreement**



# Request of the Fiscal and Management Control Board

---

Today's board action will provide for Pre-Design Phase, Design Phase, Bid Phase and Construction Phase Services for Design and Engineering Services for Forest Hills Station Improvements.

Staff request that the Fiscal and Management Control Board authorize the MBTA General Manager, or his designee, to award and execute **MBTA Contract No. A35PS01: Design and Engineering Services for Forest Hills Station Improvements with AECOM** for an amount not to exceed **\$6,860,390**.



# Appendix

## *Project Scope Details*



# Project History

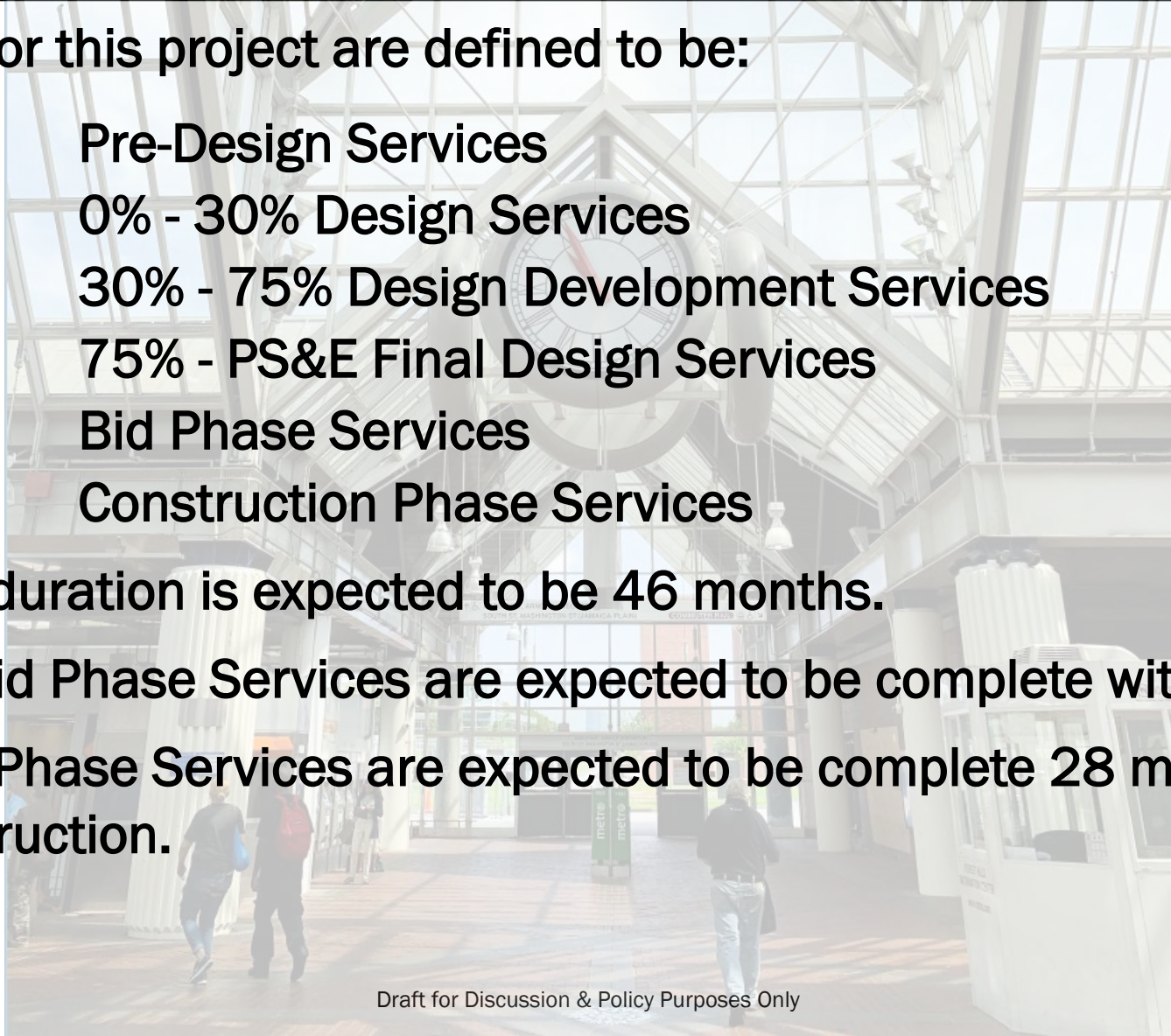
- **Current MBTA Forest Hills Station built in 1987**
- **Station important interchange between public transportation modes (Orange Line, Commuter Rail - Needham Line and Bus Connections) and considered an iconic building within Forest Hills section of Jamaica Plain neighborhood of Boston**
- **Station maintained but no major renovations since its original construction**
  - **Exceptions: Orange Line Headhouse addition (north) and Upper Busway Canopy addition (south) completed in 2019 under MassDOT Casey Arborway Project**
- **Project initiated to conform with the Massachusetts Architectural Access Board (MAAB) accessibility requirements mandated for Transportation Terminals as a result of these two recent station improvement projects**



# Project Scope

**Project Phases for this project are defined to be:**

- **Phase I      Pre-Design Services**
  - **Phase II     0% - 30% Design Services**
  - **Phase III    30% - 75% Design Development Services**
  - **Phase IV    75% - PS&E Final Design Services**
  - **Phase V     Bid Phase Services**
  - **Phase VI    Construction Phase Services**
- **The contract duration is expected to be 46 months.**
- **Design and Bid Phase Services are expected to be complete within 18 months.**
- **Construction Phase Services are expected to be complete 28 months from NTP for construction.**



# A35PS01 Project Scope

Improvements at Forest Hills Station include:

- **State of Good Repair:**
  - Replace/repair metal roofing and glazed skylights
  - Replace/repair exterior curtainwall system
  - Replace lighting (brightening)
  - Replace/repair station mechanical, plumbing, fire protection, electrical and life safety systems
  - Paint interior/exterior steel framing



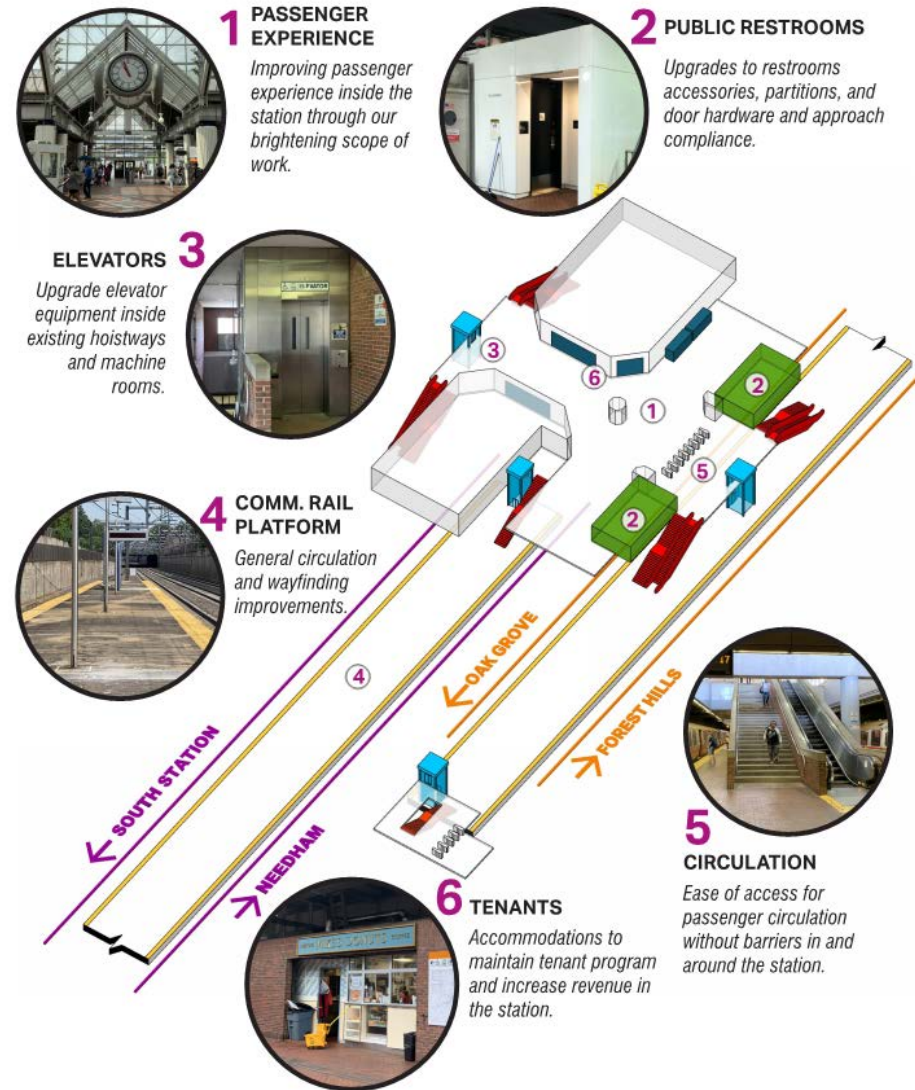
Forest Hills Station looking North



# A35PS01 Project Scope

Station and Accessibility Improvements include:

- **Customer Experience:** Cleaning, Painting, Brightening
- **Public Restrooms:** Accessibility updates
- **Elevator Replacement:** Replacing existing elevators with new elevator cabs and machinery
- **Commuter Rail Platform:** Rebuilding platform edge, installing tactile warning strip, installing protected refuge area





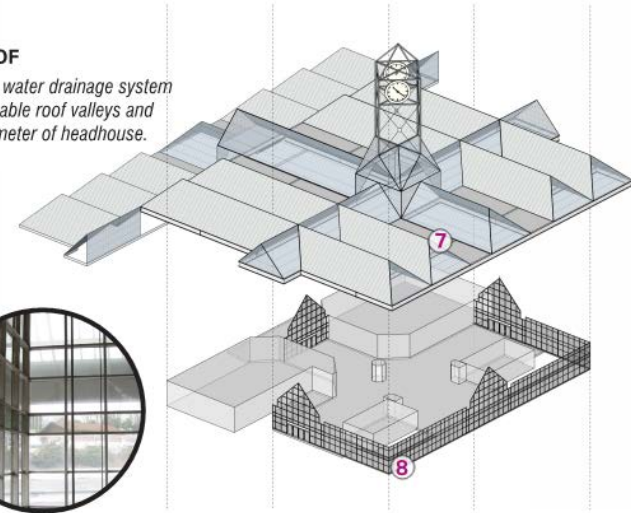
# A35PS01 Project Scope

Station and Accessibility Improvements include:

- **Roof:** Repair/replace metal roofing and glazed skylight systems
- **Facade:** Repair/replace building curtainwall system
- **Upper and Lower Busway Connection:** New elevator and stair tower providing a direction connection between the two busways



**7 ROOF**  
Rain water drainage system for gable roof valleys and perimeter of headhouse.



**8 FACADE**  
Repair or replace the existing exterior wall with new glazing and extended life system, not sealant dependent and self draining.



**9 BUSWAY CONNECTION**  
Addition of new elevator/stair tower connecting the upper and lower busways.

