



**Massachusetts Bay
Transportation Authority**

MBTA Worcester Union Station Improvements & Associated Track Work

Public Meeting

August 14, 2019



AGENDA

- Team Introduction
- Project Goals
- Project Overview
 - Purpose and Need
 - Project Benefits
 - Existing Station Layout
 - Proposed Station Layout
- Environmental Impacts
- Project Schedule
- Q&A



TEAM INTRODUCTION

MBTA

- Deputy AGM Capital Delivery
Commuter Rail Programs
- Sr. Project Manager

Nazanin Mossahebi
Maribel Kelly

HDR (Designer)

- Principal in Charge
- Project Manager
- Project Engineer
- Architect

Anthony Gouveia
Eric DiVirgilio
Salina Martin
Michael Baskin



PROJECT GOALS

- Accessibility
- Safety
- Sustainability
- Resiliency
- Operational Flexibility
- Appropriate to environs



PROJECT OVERVIEW - Purpose and Need

- **Purpose:** The Worcester Line has been identified for capacity improvements to allow for increased passenger service by the MBTA. The work includes Worcester Union Station as well as fully ADA accessible stations at Auburndale, Newtonville and West Newton and possible triple track between MP 11 and 21.
- **Need:** The existing Worcester Union Station platform provides passenger access to only one train within the station at a time. This limits capacity and operational flexibility of the entire Worcester/Framingham Commuter Rail line.

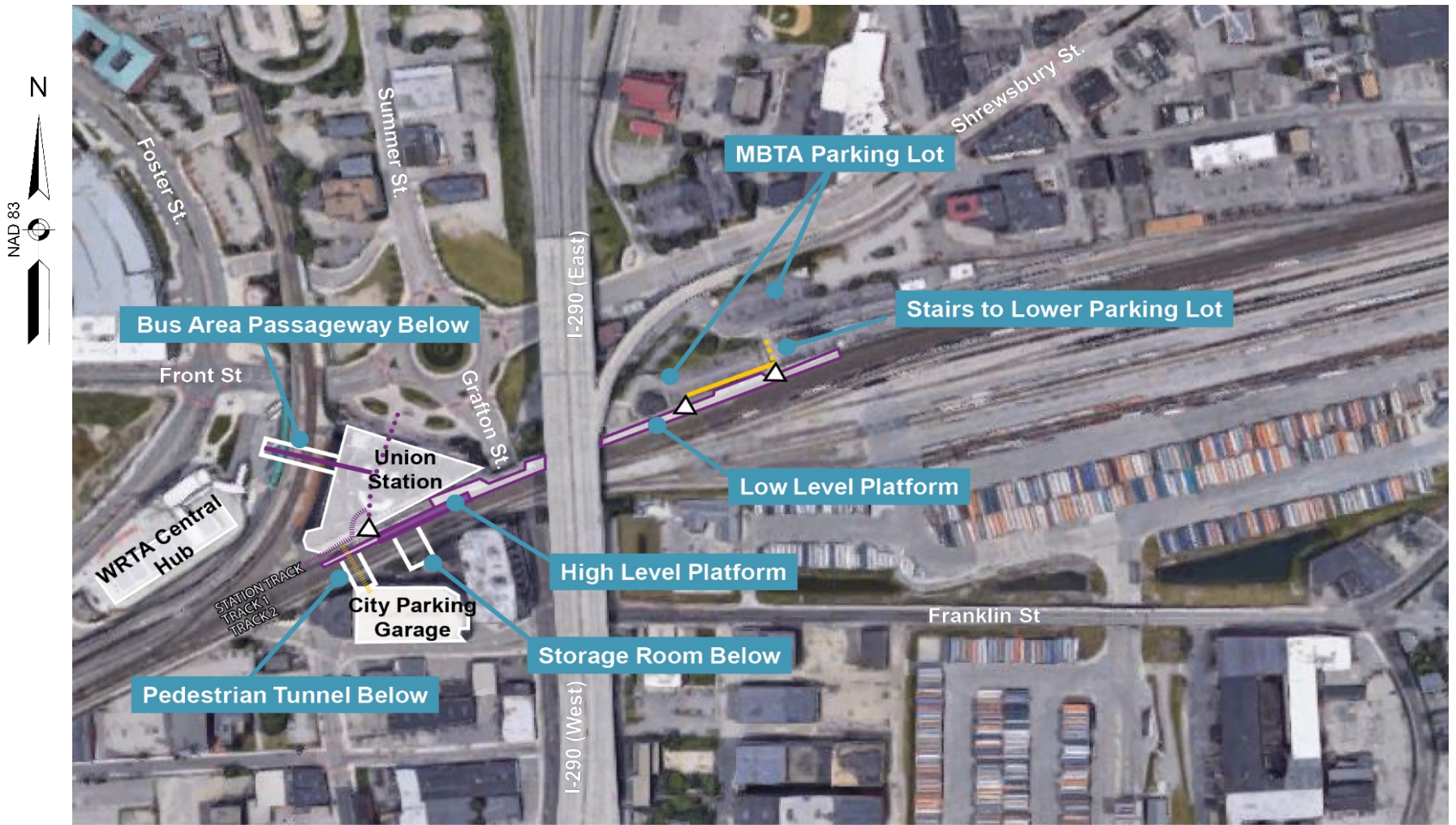


PROJECT OVERVIEW - Project Benefits

- Implement ADA upgrades to fulfill code compliance requirements.
- Increase passenger and overall system safety.
- Improve operating schedules.
- Provide environmentally-friendly station, and facility design concepts.
- Reduce station life cycle maintenance costs and lower energy consumption.
- Provide capacity expansion options to meet current and future demand.

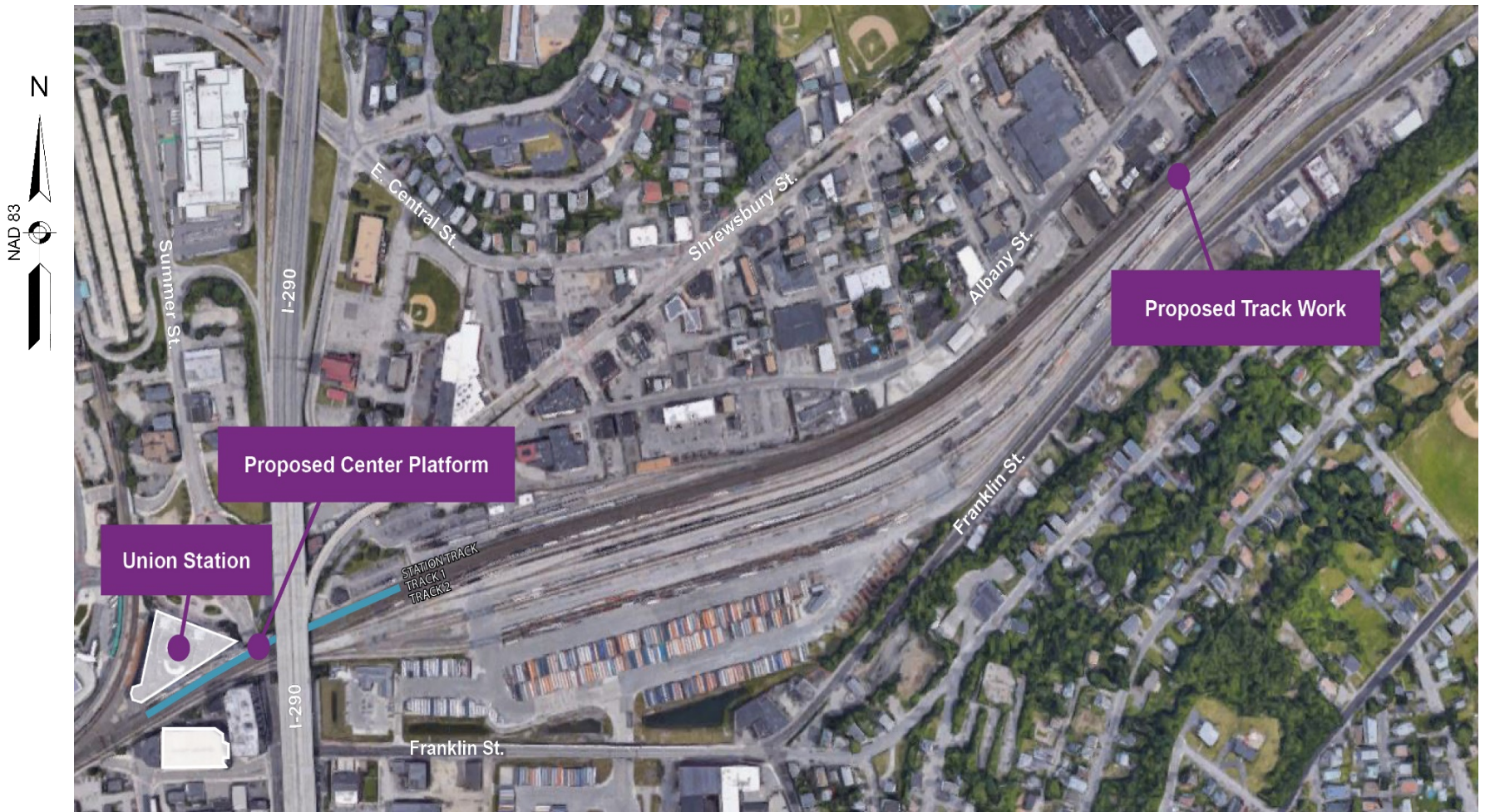


PROJECT OVERVIEW – Existing Station Layout



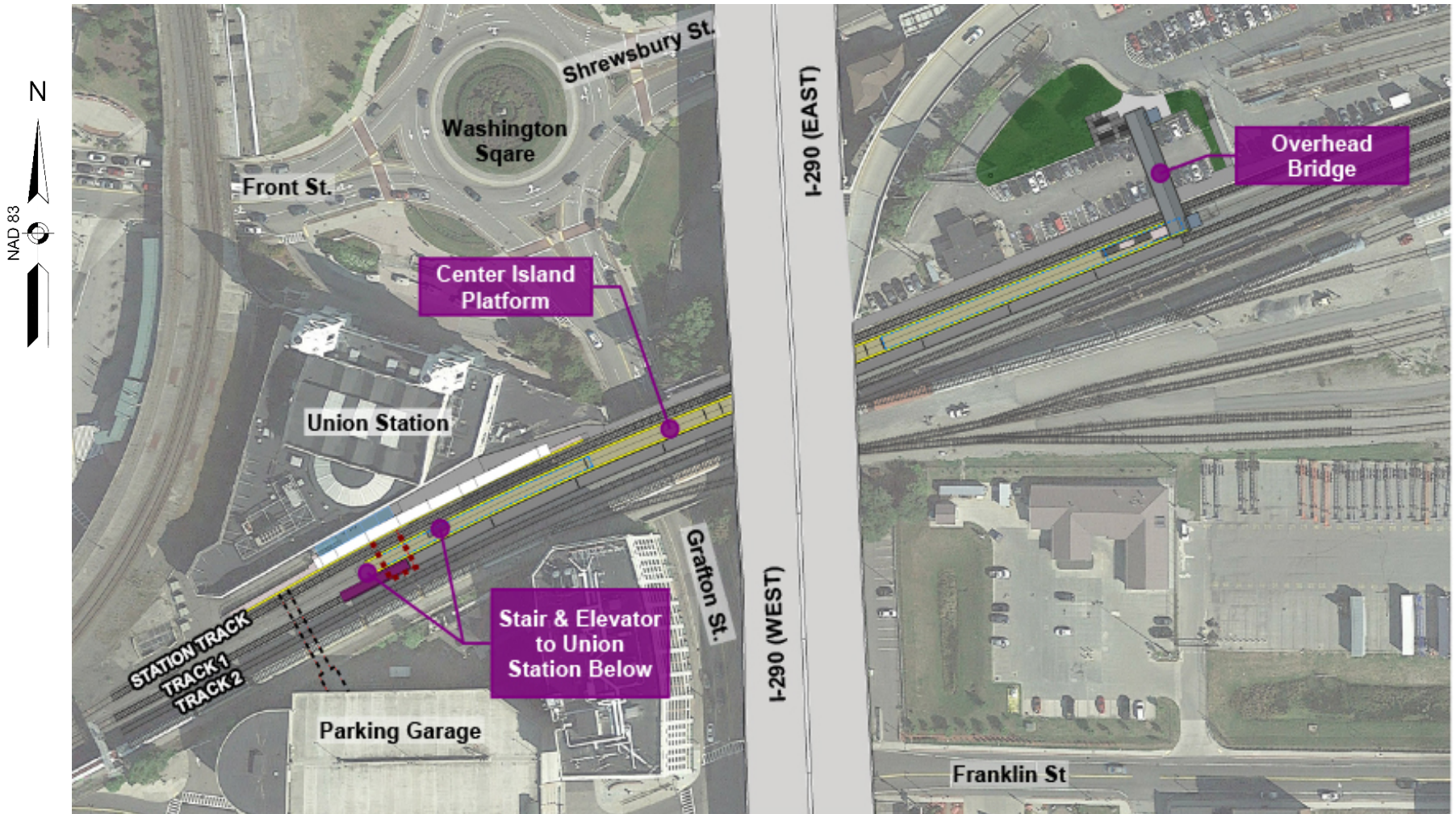


PROJECT SCOPE – Project Plan





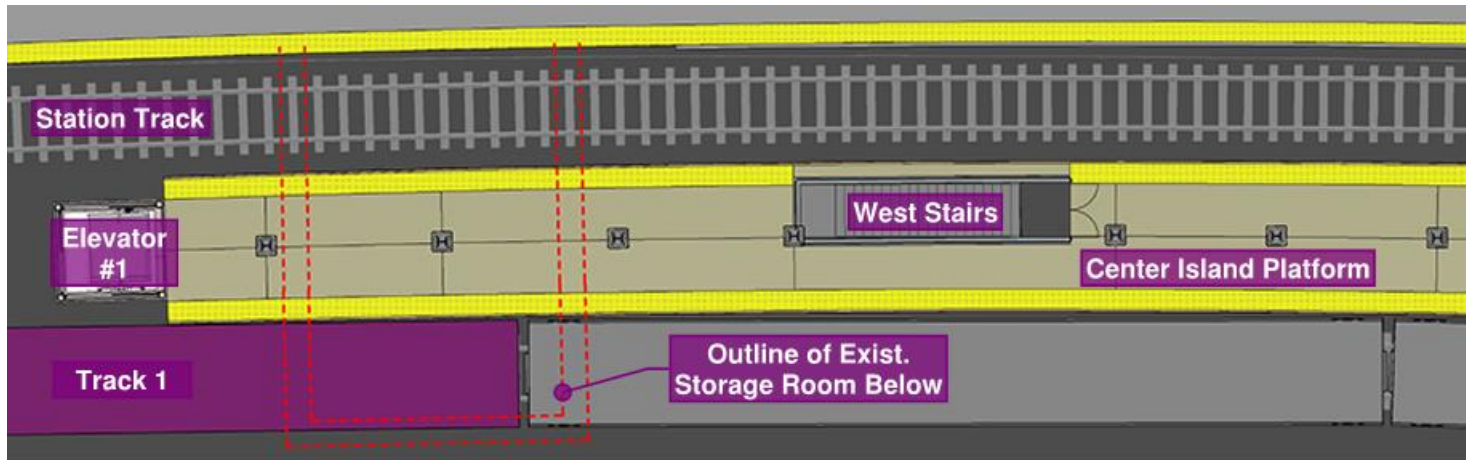
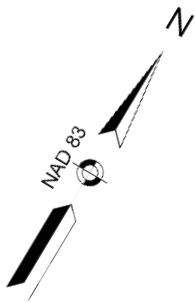
PROJECT SCOPE – Project Plan at Station



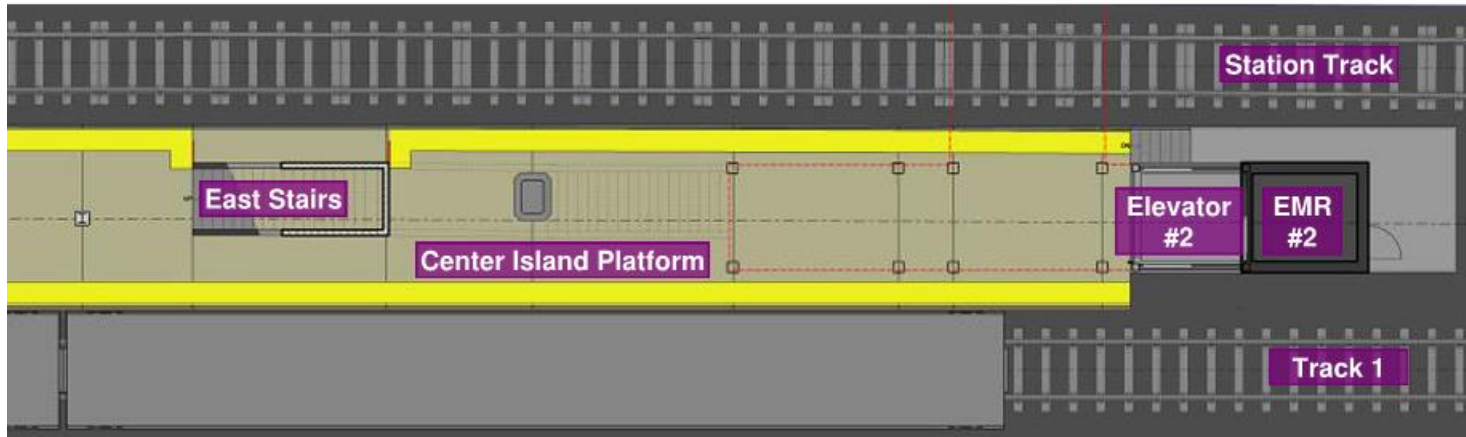


PROJECT SCOPE – Platform Plans

West End Platform



East End Platform





PROJECT SCOPE – View of East End from Lower Parking Lot





PROJECT SCOPE – View of East End from Upper Parking Lot





ENVIRONMENTAL CONDITIONS

- Environmental impact expected to be minimal:
 - Coordination with Massachusetts Historic Commission (MHC) on historic properties.
 - Evaluation on soil management requirements occurring.
- Environmental improvements:
 - Storm water treatment improvement and storm water management.
 - LED lighting to minimize energy consumption.



PROJECT SCHEDULE

Milestones	Schedule
30% Submission	07/2019
75% Submission	11/2019
Final Design	04/2020
Bid Phase	05/2020 - 08/2020
Start of Construction	08/2020
Project Completion	08/2022



PUBLIC OUTREACH

Project Website

<https://www.mbta.com/projects/worcester-union-station-improvements>

Public and Stakeholders can sign up for email updates from project on website.

Project Email

UnionStation@mbta.com



Thank You

Questions & Answers